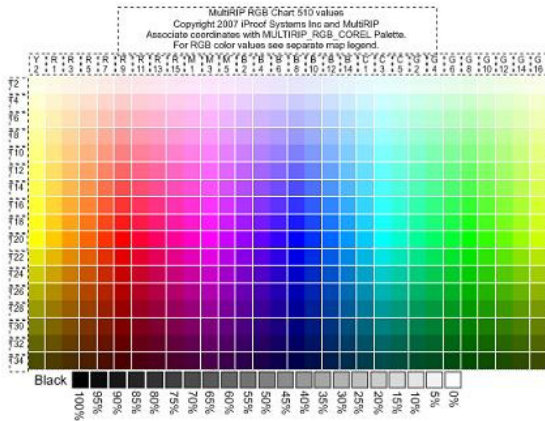


CorelDraw Color Chart, Palette & Table Guide

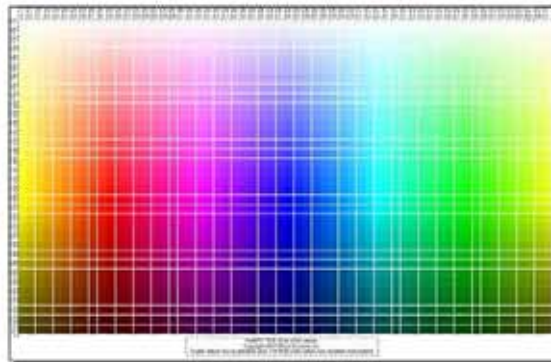
Most users want to be able to show their customers the variety of colors that can be printed and how those colors can be affected when printed on to different colors of t-shirts or other substrates. Thanks to Ted at iProof, you now have the ability to print either a 510 or 2040 RGB color chart.

Click here to download the CorelDraw RGB package - http://www.multirip.com/Corel_RGB.zip

510 Color Chart



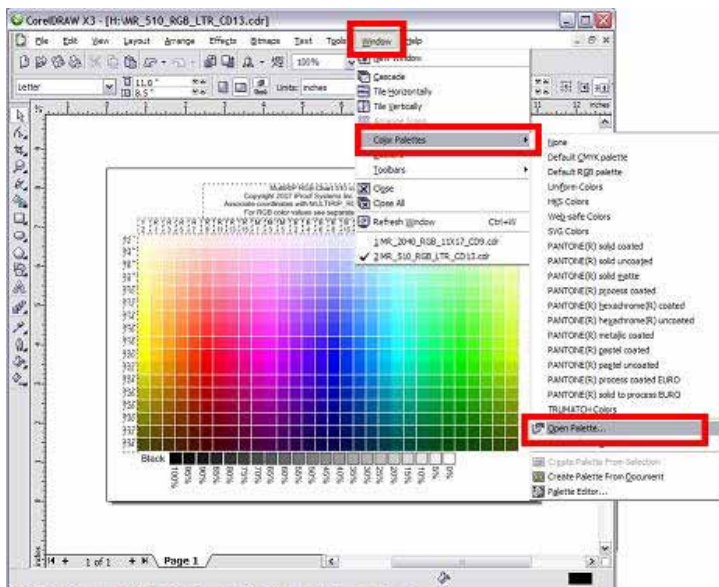
2040 Color Chart



In addition, MultiRIP has provided you a Color Palette that coordinates with the 510 Color Chart. We also added in 20 grayscale boxes as well.

You can load the Color Palette by following these instructions:

1. Open up CorelDraw. Go to Window link across the top and go down to Color Palette. Go over to Open Palette.



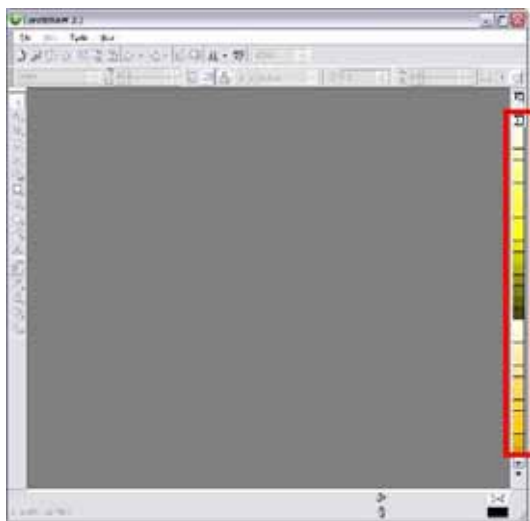
Please visit www.AnajetUsers.com for more technical support on MultiRIP GP.

Updated 11/01/03

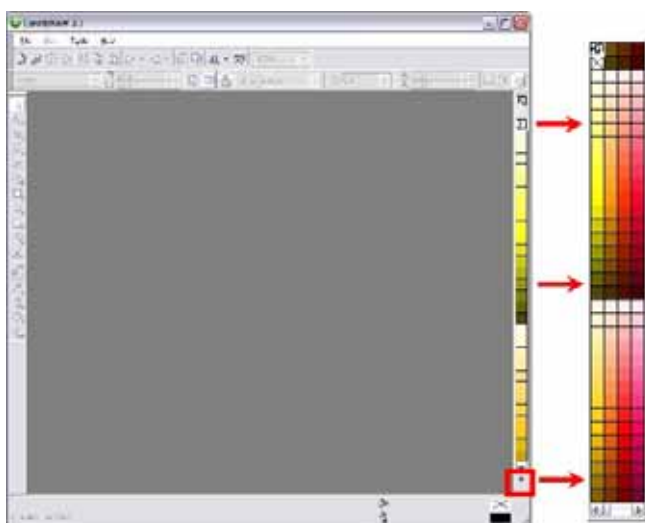
2. Locate the Corel RGB Color Palette for MultiRIP that is in the zip file above and click the Open button.



3. The palette will be loaded into your working space in CorelDraw.



4. The color palette is associated with the 510 color chart that is also in the zip file. To expand the color palette, click on the arrows at the bottom of the color palette.



Please visit www.AnajetUsers.com for more technical support on MultiRIP GP.

Updated 11/01/03

NOTE: You can set the MultiRIP Color Palette as your default color palette. See the instructions in CorelDraw for how to do this.

If you print the color chart out using the same settings as your graphic, you will be able to choose the correct colors using the X- and Y- axis coordinates to select the correct color.

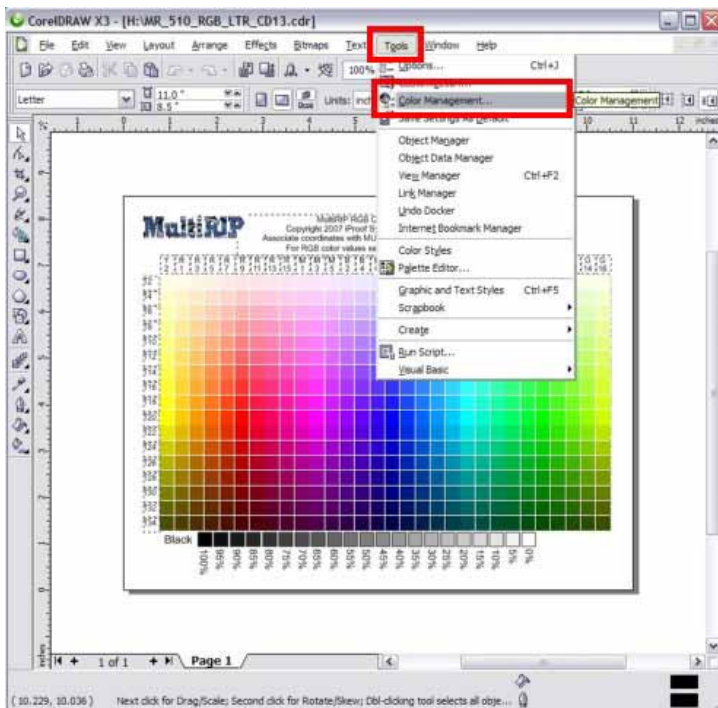
NOTE: You can choose to use the 2040 color chart and the PDF color table to have even more colors to choose from.

CorelDraw Color Management

If you are printing the color chart out of CorelDraw and you notice that the boxes at the bottom of the chart are getting too much ink, please make sure that you change the following settings in CorelDraw:

Turn Off Color Management in CorelDraw

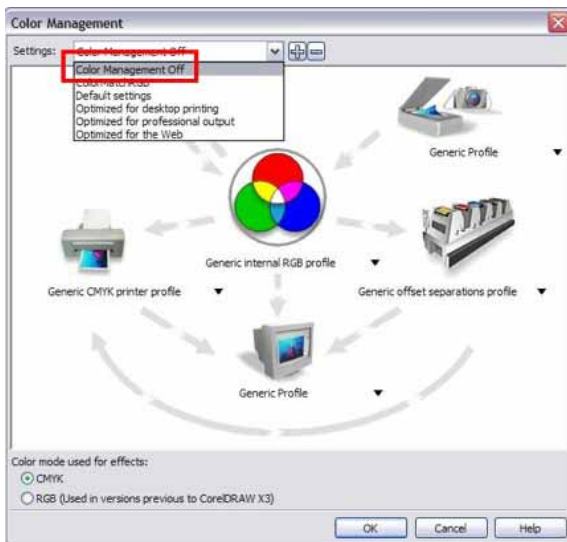
This will leave all the color management to the RIP. When using MultiRIP, you have two choices. First, you can turn off your color management feature. To do this go, in to Tools ---> Color Management.



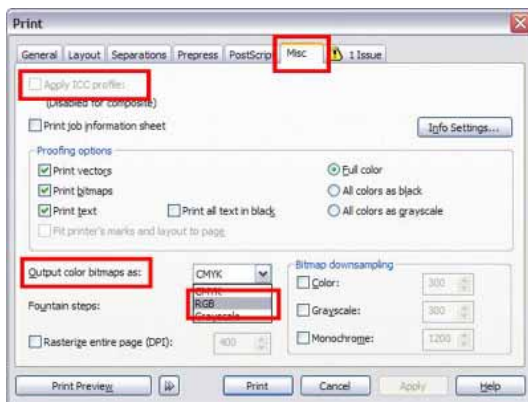
Then, choose Turn Off Color Management in the drop-down box.

Please visit www.AnajetUsers.com for more technical support on MultiRIP GP.

Updated 11/01/03



When you are ready to print the graphic, you will need to make sure that you change one other setting. On the Miscellaneous tab in the Print screen (second tab from the right), you will see a drop-down box for Output Bitmap as. This needs to be set to RGB. In addition, you should not be able to select the box for Apply ICC Profile in the top left corner of the window. If you can, please make sure that the box is NOT checked.



Please visit www.AnajetUsers.com for more technical support on MultiRIP GP.

Updated 11/01/03