

MultiRIP

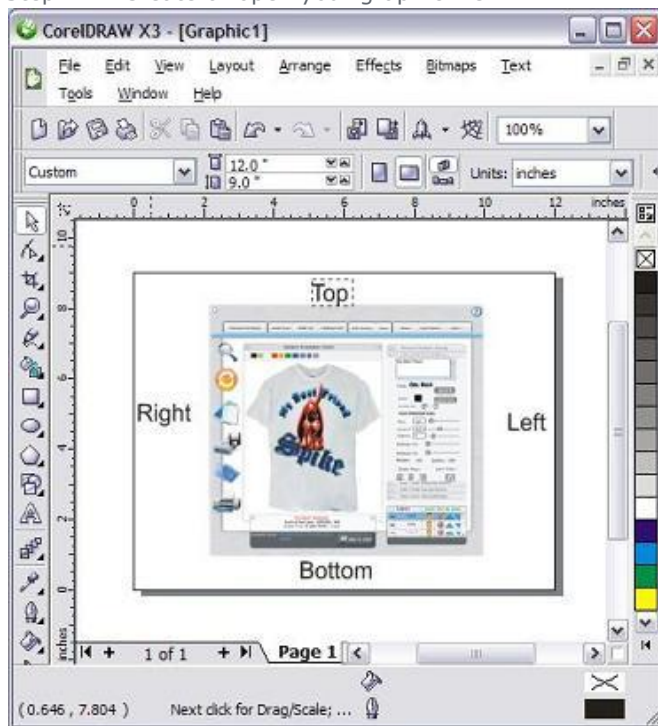
Problems Printing from CorelDraw on Roll Paper

Some MultiRIP users have encountered problems printing on roll paper from within CorelDraw. We have tested MultiRIP on several different versions of CorelDraw on different computers and they behave different for no real reason. CorelDraw overrides and changes the information that is being sent to the printer unlike any other program (i.e. PhotoShop, Word,...). Almost every time, the changes occur when printing on to a roll of paper and using the "Long Edge First" setting.

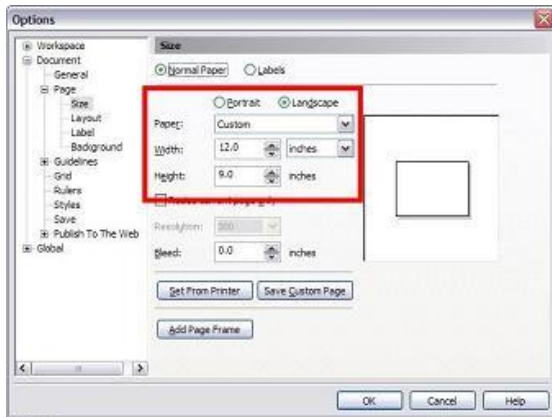
Below are instructions for printing from CorelDraw X3 to roll paper. If you are having difficulty printing on to rolls on any other version of CorelDraw, please email us at support@multirip.com.

Printing on Roll Paper from CorelDraw X3 Using "Long Edge First" Setting.

Step #1: Create or open your graphic file.

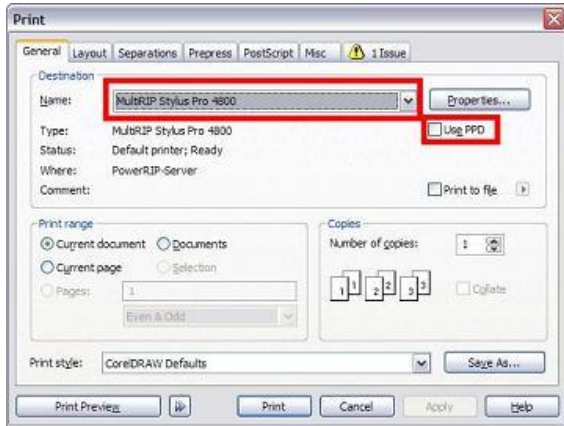


Step #2 Make sure that the page size in Corel will fit within the printable area of your printer. Go to the Layout link across the top of your screen and go down to Page Setup. For this example, we are using a page setup of 12" wide by 9" high.



Step #3: Next, you will go to print the graphic by clicking on the File link at the top of the page and go to Print. The window below will open up. On the General tab, you will need to select the MultiRIP printer that you want to use. In this case, we are going to use MultiRIP Stylus Pro 4800.

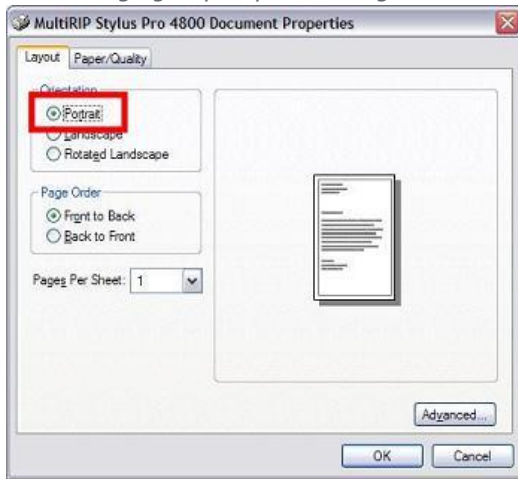
If you are having trouble from printing with CoreDraw when the "Use PPD" box is selected, please leave it blank. The PPD will still be used by the driver.



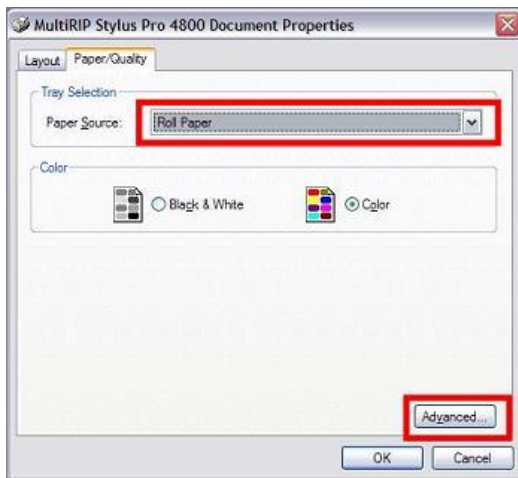
Step #4: Next, click on the Layout tab and make sure that the radio button for "Reposition images to:" is selected. Then you can choose where you want it to show up on the roll paper. In this case, we selected "Left Center" so that the graphic will be aligned with the left side of the roll and centered based on the height of the paper size – which will be set later on in the RIP.



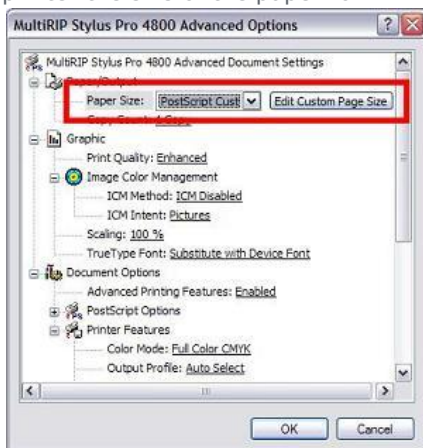
Step #5: Return to the General tab and click on the Properties button. The screen below will open up. In the Layout tab, you will want to have Portrait selected in the Orientation box. Please note, even though the paper size and layout are for a Landscape page, please select Portrait. This will help prevent CorelDraw from changing any of your settings later on.



Step #6: On the Paper / Quality tab, you will want to select Roll Paper in the drop-down box for Paper Source. Then click on the Advanced button to access the RIP settings.

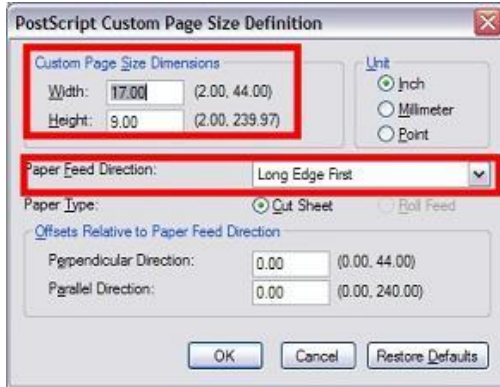


Step #7: For your Paper Size, please select PostScript Custom Page Size. This will allow us to tell the printer the size of the paper roll.



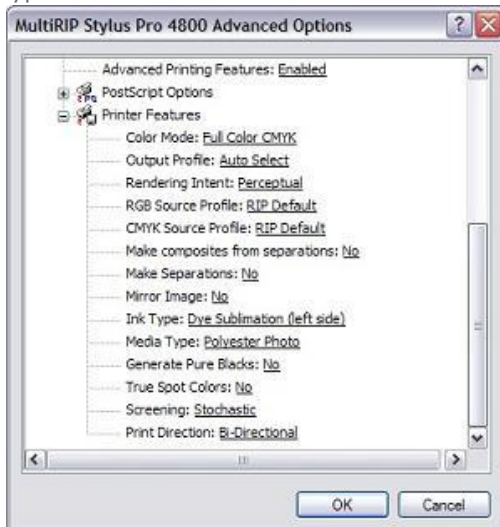
You will need to set the width of the paper roll and the height of the amount of paper you want to come out of the printer. The height should include enough space around your graphic so that your graphic is not cut off. You will also need to set your Paper Feed Direction. Here is a simply rule to help determine which one you should use:

- If the Width is LARGER than the Height, use Long Edge First (Larger = Long)
- If the Width is SMALLER than the Height, use Short Edge First (Smaller = Short)

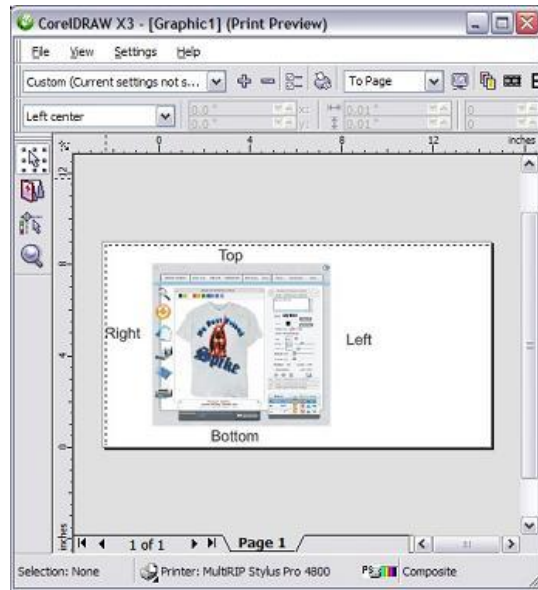
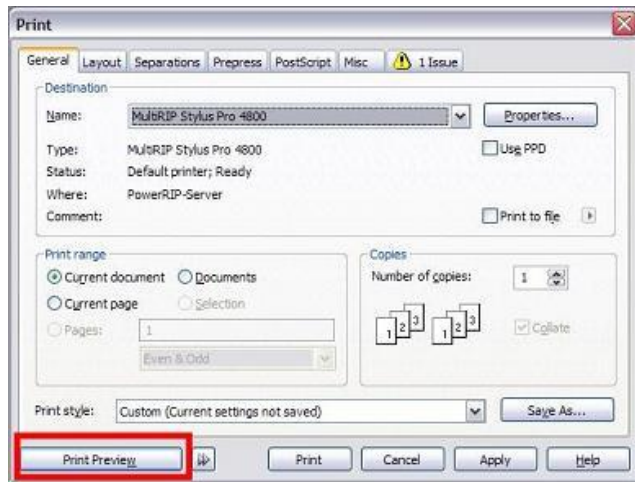


NOTE: When printing from a roll, the printer will need an additional amount of paper (approximately 1 inch) to be feed through the printer before it will start printing your design.

Step #8: Select the remaining settings in the RIP depending on what type of printing application, media type and so on.



Step #9: After clicking OK two times, you will return to the main Print widow of CorelDraw. You can click the Print Preview button in the bottom left corner to preview the graphic and make sure it is in the correct place based on your settings. However, there are some versions of CorelDraw that will have the graphic look straight in the CorelDraw preview window (as shown below), but it prints differently. Thus, the reason why you need to preview the graphic in the RIP in Step #10.



Step #10: Once you are ready to send the graphic to the Printer, click on the Print button. The MultiRIP Interface will open up and it will begin to process your graphic.

NOTE: If you would like to preview your graphic prior to it being printed, you can unplug the USB cord connecting the printer and the computer. Then, click on the Pages to Printer tab in the MultiRIP Interface. You will need to double click on the file name of the graphic. In the Preview window, you will need to click on which page you would like to view on the left side.

