

MultiRIP

APPLICATION PRINTING

Screen Printing

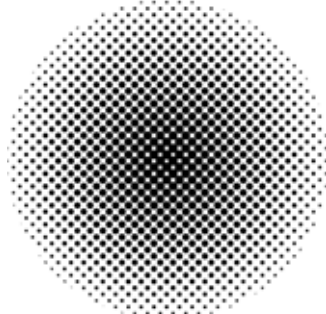
MultiRIP's halftone screening turns an ordinary inkjet printer into an imagesetter, enabling output of screened film positives that are used to expose offset plates or silk screens. You can generate screened separations from any composite PostScript or PDF file or print separations from your favorite front-end application. You can print a composite from a separation to check for trapping and moiré, while specifying your own screen rulings, or use our built-in pre-defined screen rulings.

MultiRIP comes with pre-linearized curves for several industry film positive media when using MultiINK™. For a detailed list of what films have curves for them, please visit the MultiRIP User Forum.

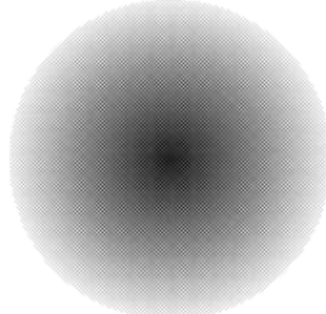
Halftone Step-by-Step Instructions

There are three main key terms when printing halftones on film media. Below are short descriptions of these terms.

- Frequency (AKA Size of Dots) – is the number of dots that will fit in a linear inch. The higher the frequency number is the smaller the dots will be.



Lower Frequency



Higher Frequency

- Angle – is the degree of offset between one line of dots to the next line of dots.



The angle of these dots is 45 degrees.

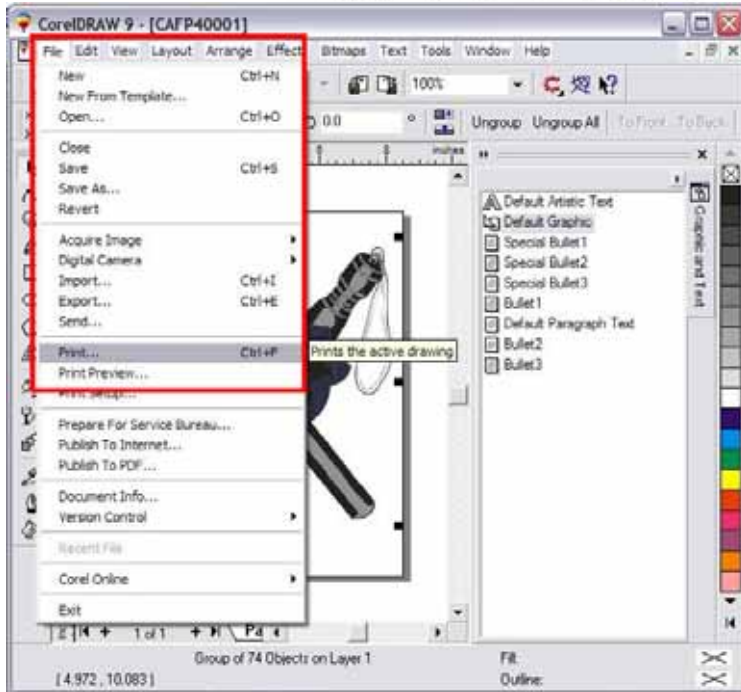
- Shape – is the shape of dot that is being placed down. There are many different types of shapes that can work, but most screen printers recommend using an Ellipse shape.

Instructions for Printing Halftones in CorelDraw®

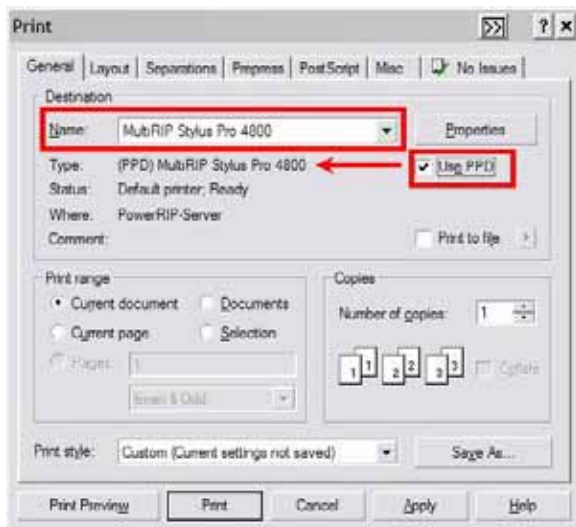
1. Create your graphic in CorelDraw®. Go to the File Menu and click on the Print selection.

For up-to-date information, please visit the online User Forum at www.multiripusers.com.

MultiRIP



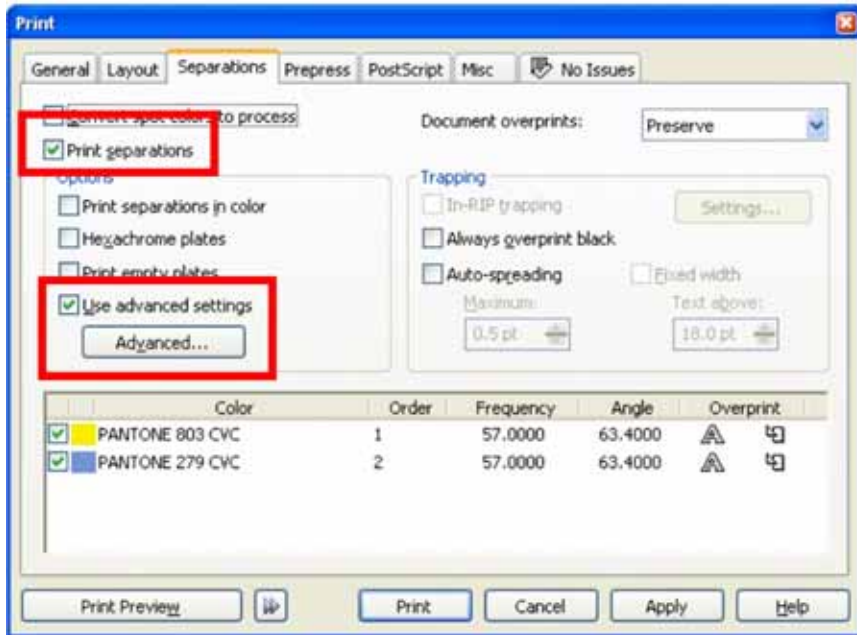
2. Choose MultiRIP Stylus Pro x800 in the Printer Selection. Make sure that the “Use PPD” box is checked. If not PPD is listed in the Type field, you will need to select the correct PPD. View the PPD post on the User Forum - <http://multiripusers.com/yabb/YaBB.pl?num=1179036200/0>.



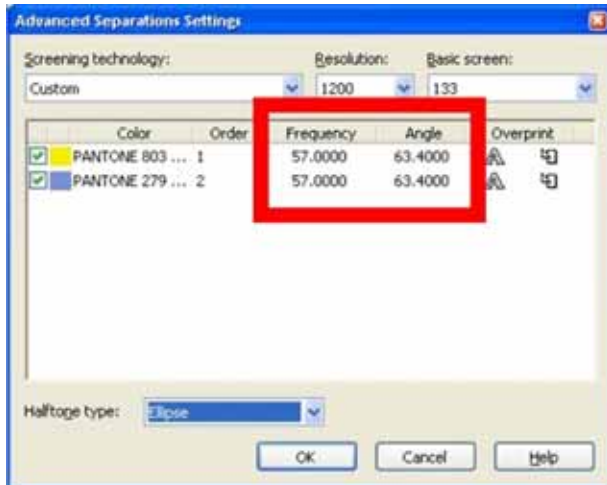
4. Click on the Separations tab at the top of this window. Check the box “Print Separations”, which will activate the selections below. Then, you will check the box “Use Advanced Settings” and click on the Advanced button.

For up-to-date information, please visit the online User Forum at www.multiripusers.com.

MultiRIP



6. On the Advanced option page, make the changes to the Frequency and Angle for each color.



Note: It is recommended that all the colors use the same Frequency and Angle settings.

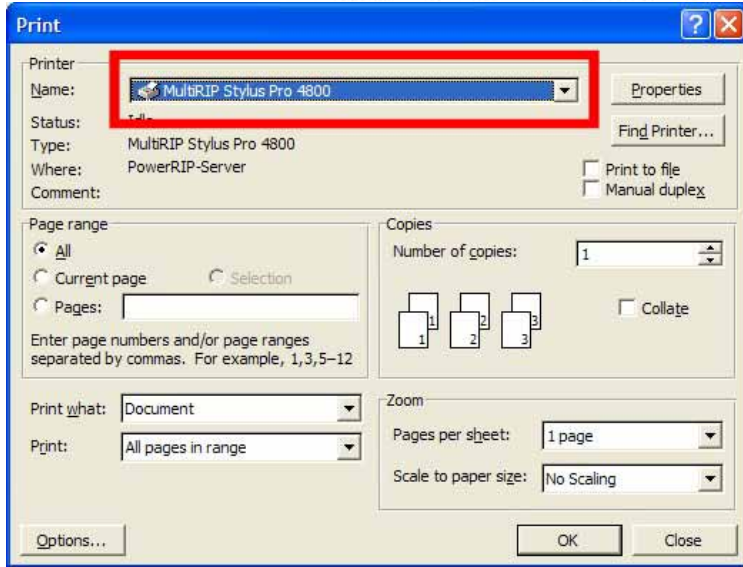
7. Choose the shape of the Halftone type in the dropdown box. Click OK.



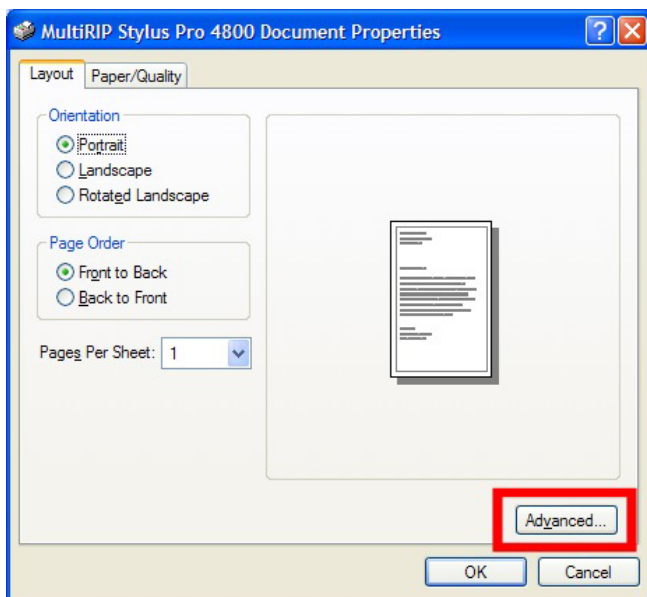
8. Go back to the General tab in the printer menu and click on the Properties button.

For up-to-date information, please visit the online User Forum at www.multiripusers.com.

MultiRIP



9. In the Layout tab, click on the Advanced button in the bottom left corner.



10. In the Advanced screen, set the following settings:

Paper Size – the size of the your graphic plus some space around the design to tape the film down to the screen.

Print Quality – Fine (Film) or Max Resolution (Film) should be your setting

Make Separations – This should be No if you have already done your separations.

MultiRIP will only do basic CMYK separations.

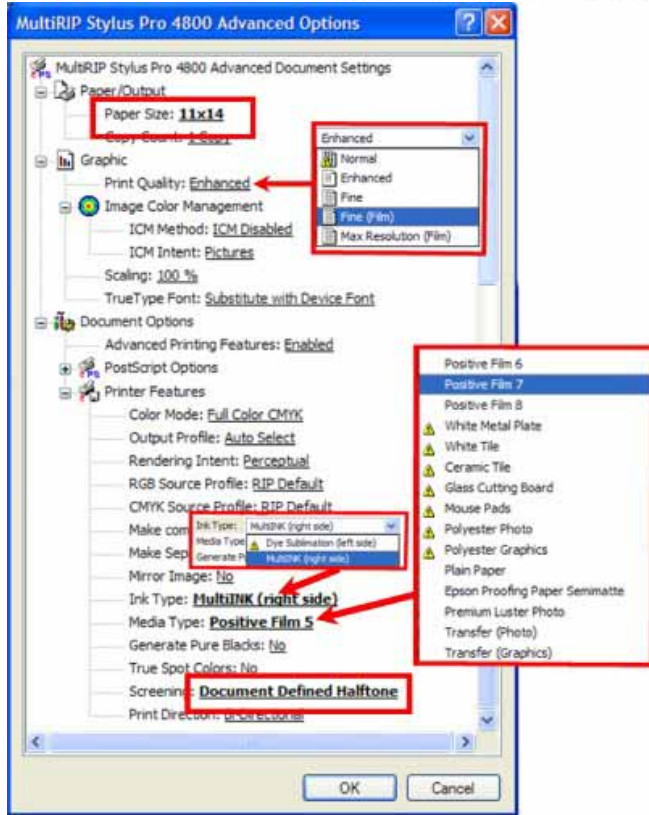
Ink Type – should be set to MultiINK

Media Type – choose the appropriate film selection as defined in MultiRIP's User Forum

Screening – set this to "Document Defined Halftone" setting

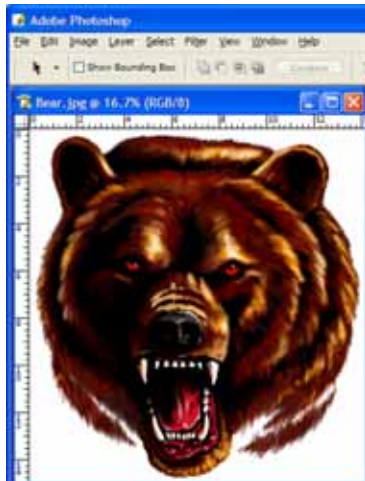
For up-to-date information, please visit the online User Forum at www.multiripusers.com.

MultiRIP



Instructions for Printing Halftones from Adobe PhotoShop®

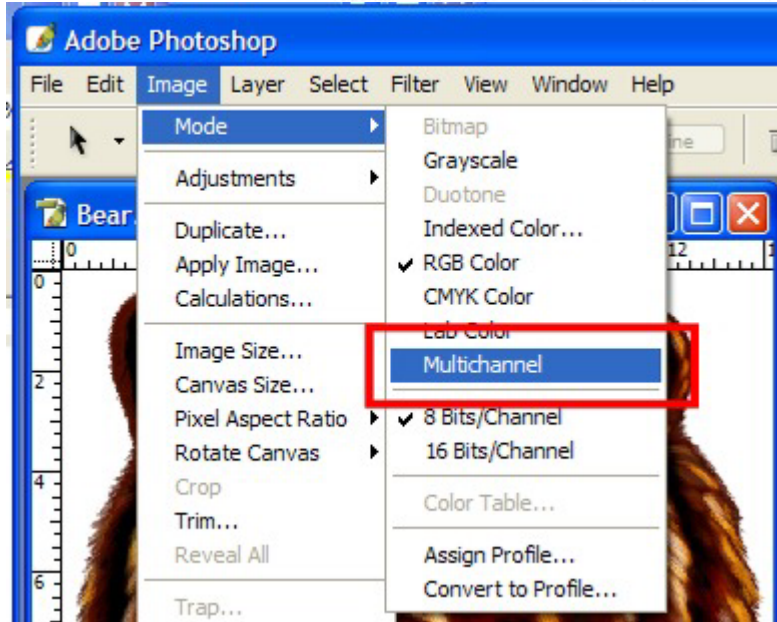
1. Create / open your graphic in Adobe PhotoShop®.



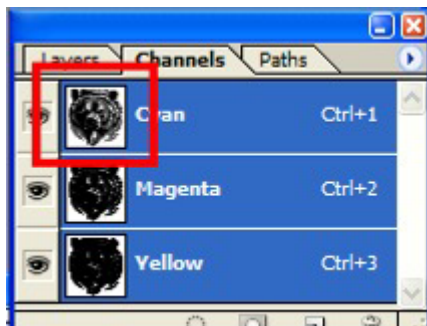
2. Go to the Image Menu at the top of the page and go down to the Mode selection. Go over to the "Multichannel" selection.

For up-to-date information, please visit the online User Forum at www.multiripusers.com.

MultiRIP



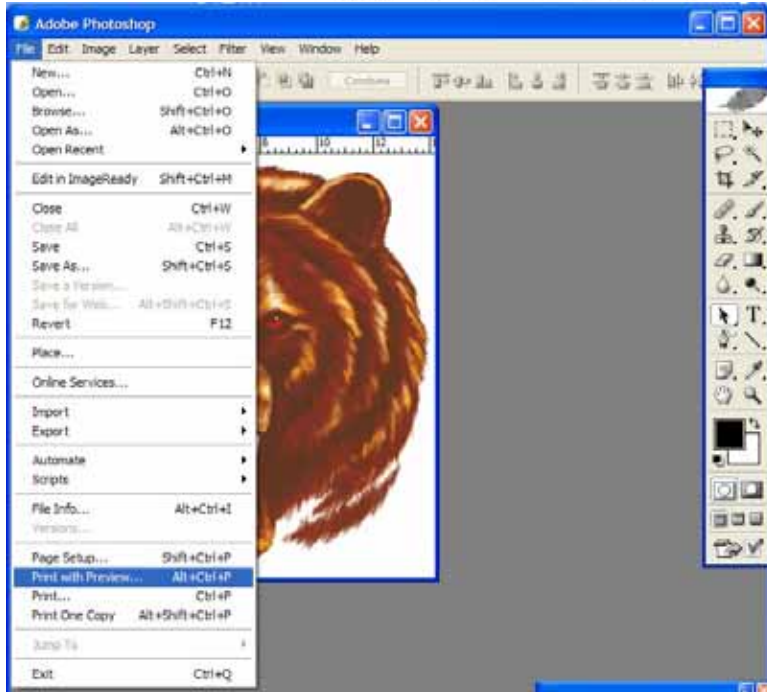
3. In your Channels Palette, turn off all but one of the channels by clicking on the eye icon. You will print one channel at a time through MultiRIP.



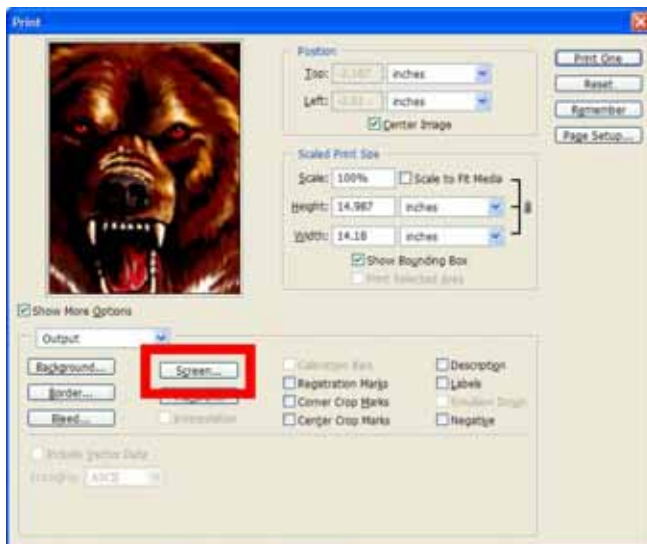
NOTE: Be sure to delete the channels you do not need (i.e. RGB and "Do Not Print" channels).

4. Go to File Menu and down to Print with Preview selection

MultiRIP



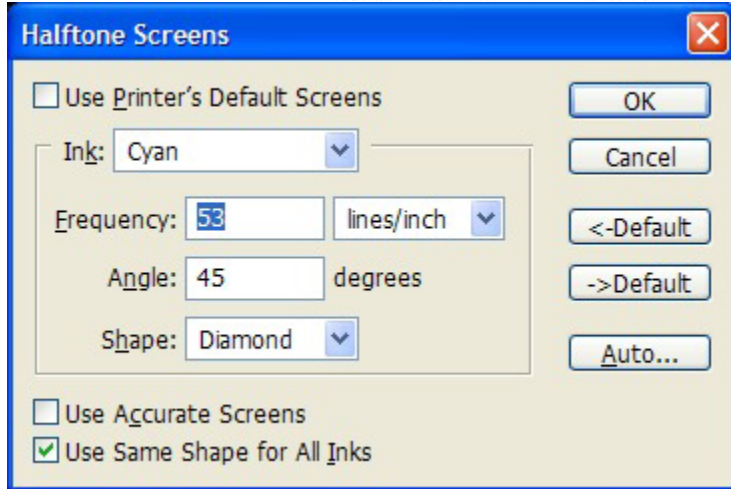
3. Click on the "Screen" button at the bottom.



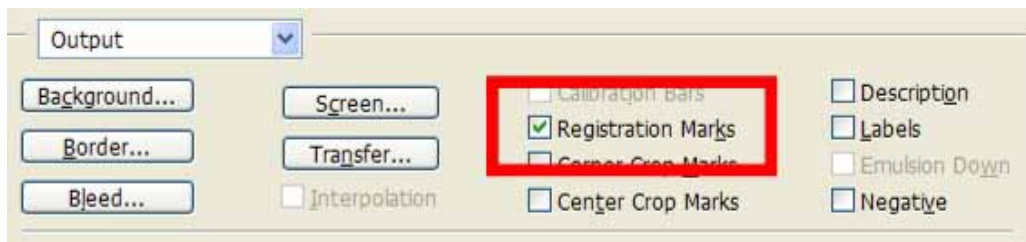
4. Select the Color in the dropdown box and type in your desired settings. Click the OK button.

For up-to-date information, please visit the online User Forum at www.multipusers.com.

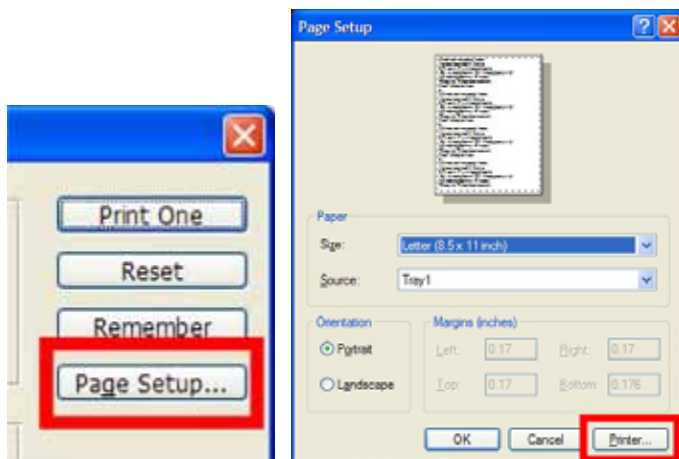
MultiRIP



5. Check the box for Registration Marks or put your own registration marks on the file.

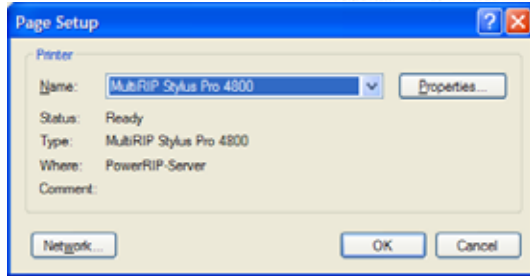


6. Click on the Page Setup button and click on the Printer button at the bottom right corner.

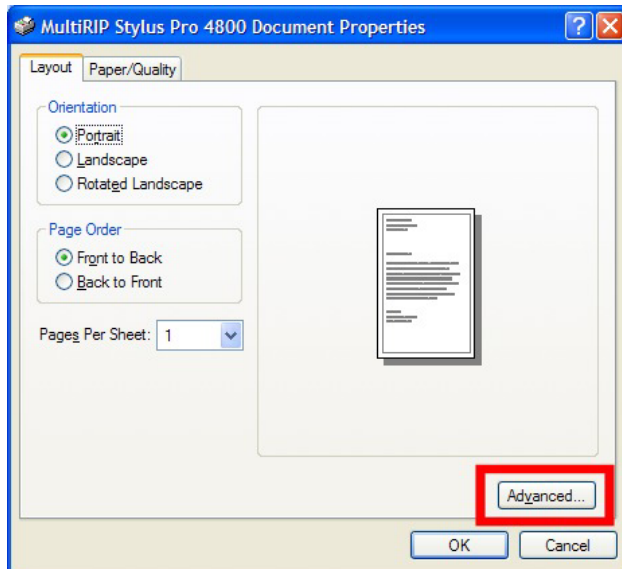


7. Select the MultiRIP Stylus Pro 4800 in the Printer Selection Box.

MultiRIP



8. Click on the Properties button and then the Advanced button.



9. In the Advanced screen, set the following settings:

Paper Size – the size of the your graphic plus some space around the design to tape the film down to the screen.

Print Quality – Fine (Film) or Max Resolution (Film) should be your setting

Make Separations – This should be No if you have already done your separations.

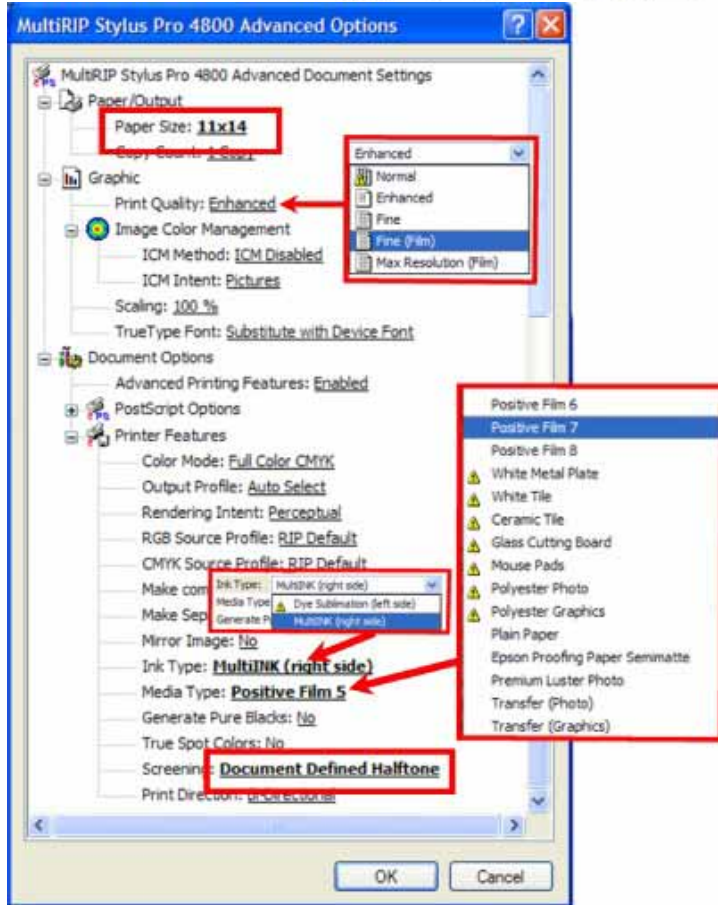
MultiRIP will only do basic CMYK separations.

Ink Type – should be set to MultiINK

Media Type – choose the appropriate film selection as defined in MultiRIP's User Forum

Screening – set this to "Document Defined Halftone" setting

MultiRIP



10. Click OK four times till you get back to the Print with Preview screen and click on the Print Button in the top right corner.

Roll Media Step-by-Step Instructions

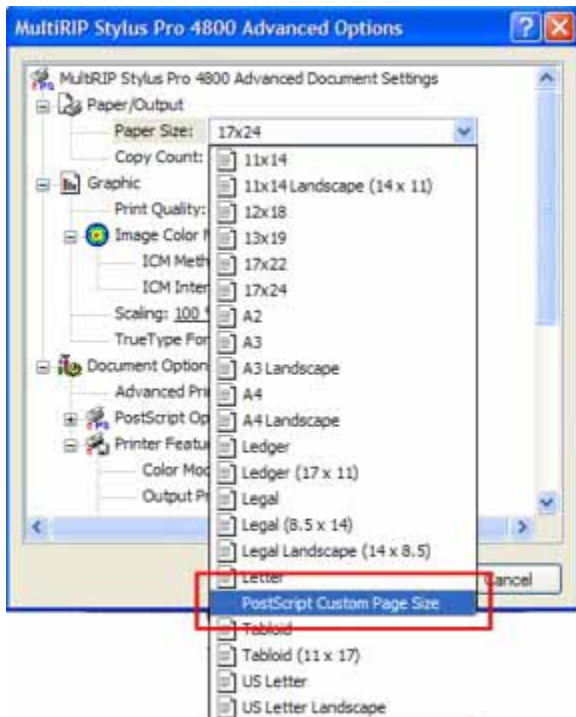
When printing from a roll of sublimation paper, you should do the following additional steps to set up your printer to accept roll feed.

1. After selecting the MultiRIP Stylus Pro X800 printer and clicking Properties, you will need to change the Paper Source to “Roll Paper”.

MultiRIP

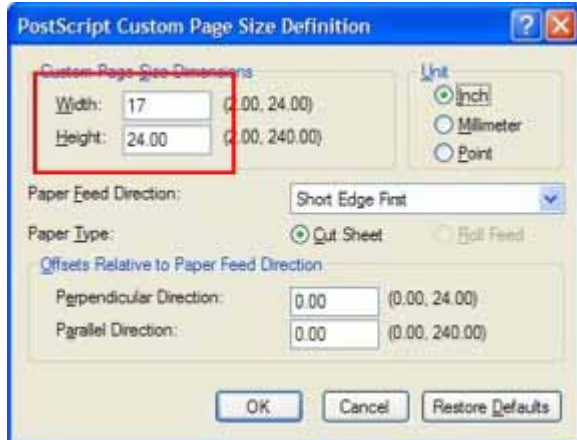


2. Then click on the Advanced button. For the Paper Size, you will want to select PostScript Custom Page Size.

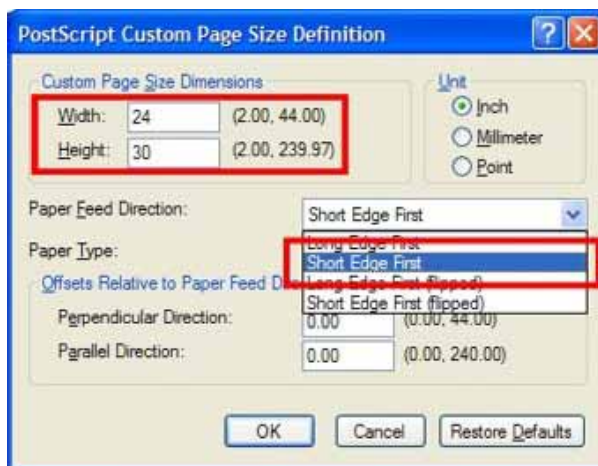


3. A new window will open up for you will put the width of the paper roll you are using and the height of the document.

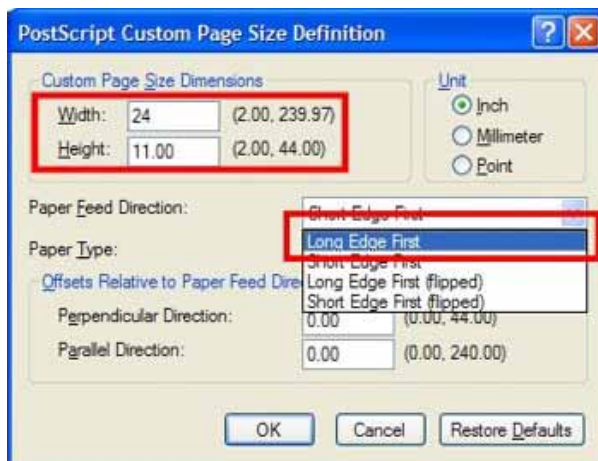
MultiRIP



4. For the Paper Feed Direction selection, you will need to choose from “Short Edge First” or “Long Edge First”. You will choose “Short Edge First” when the width of your page size is smaller than the height.



You will choose “Long Edge First” when the width of your page size is larger than the height.



For up-to-date information, please visit the online User Forum at www.multipusers.com.

MultiRIP

NOTE: When using the Roll Paper function on the Epson 4800 and 7800 printers, the printer will automatically cut the paper to the height of your document unless you turn the cutting function off. See your Epson Printer Manual for how to do this.