

MultiRIP

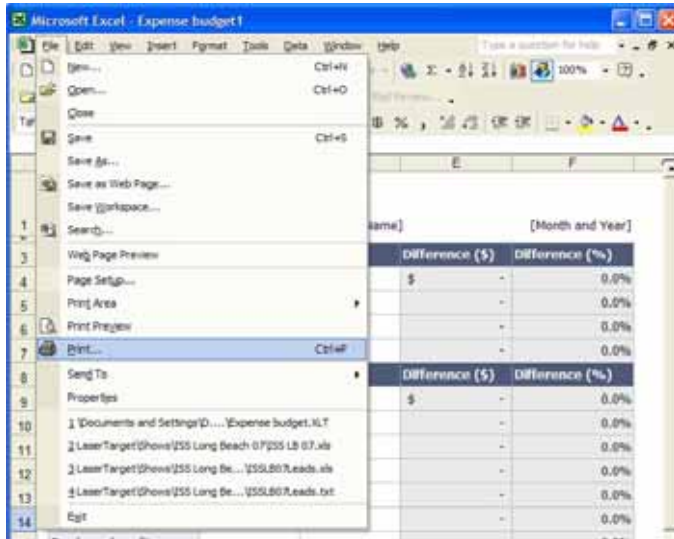
APPLICATION PRINTING

General Business Printing (📺 [Video Available](#))

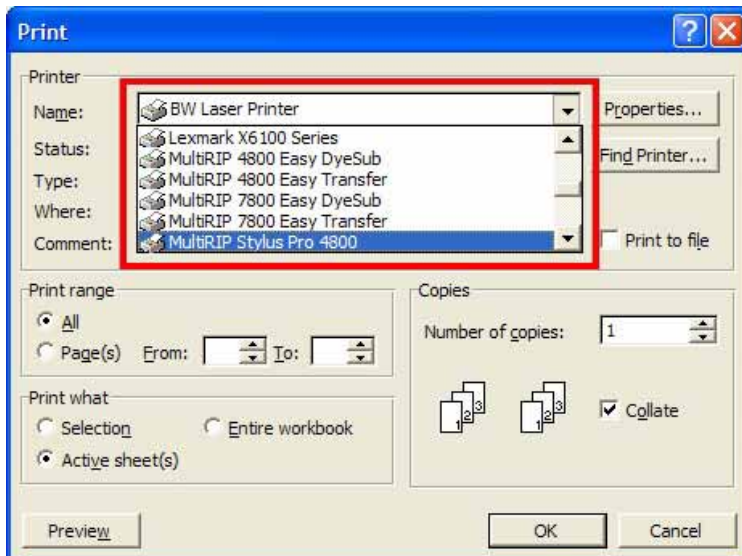
MultiRIP allows your printer to be more than just another piece of equipment you use to decorate clothing. MultiRIP can be used for all your traditional paper printing needs (i.e. customer invoices, production forms, reports, marketing flyers,...) as well.

Step-by-Step Instructions for General Business Printing

1. Open your document in the appropriate program. For example, we are going to use Microsoft Excel® for printing an Expense Budget. Go to File Menu and down to Print.



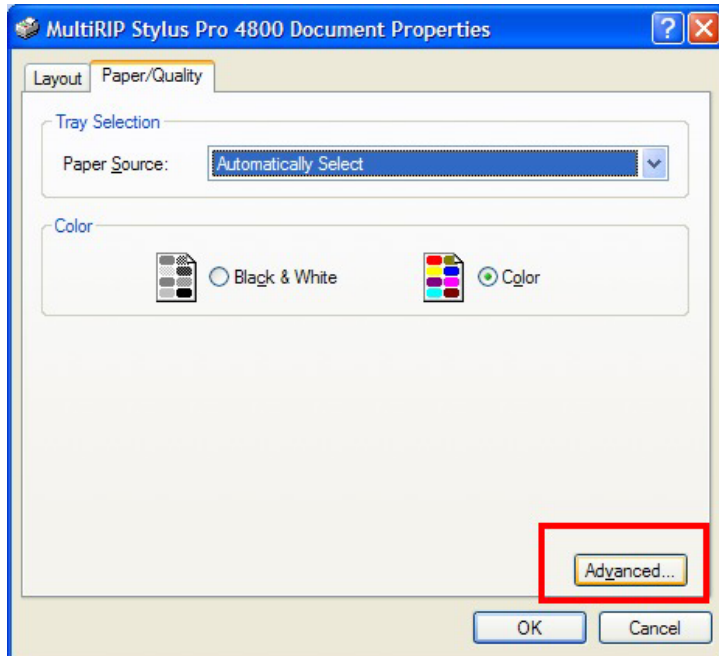
2. Select the MultiRIP Stylus Pro 4800 printer.



3. Click on the Advance Tab in the bottom left corner of the window.

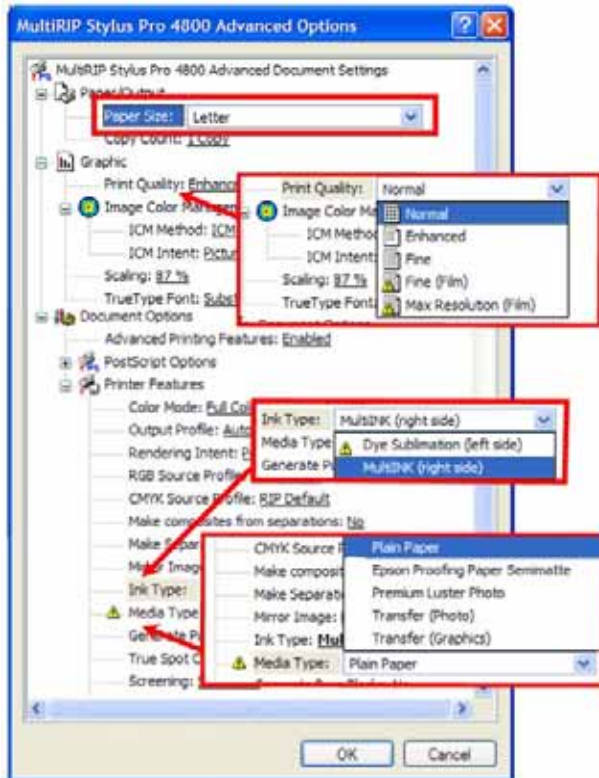
For up-to-date information, please visit the online User Forum at www.multipusers.com.

MultiRIP



4. In the Advanced Options screen, you will need to set the following fields:
 - Paper Size – Based on the size of the paper in your printer
 - Print Quality – Standard items should be printed in Normal.
Marketing materials should be printed in Enhanced.
 - Ink Type – Should be set to MultiINK.
 - Media Type – Should be set to Plain Paper.

MultiRIP



Roll Media Step-by-Step Instructions

When printing from a roll of sublimation paper, you should do the following additional steps to set up your printer to accept roll feed.

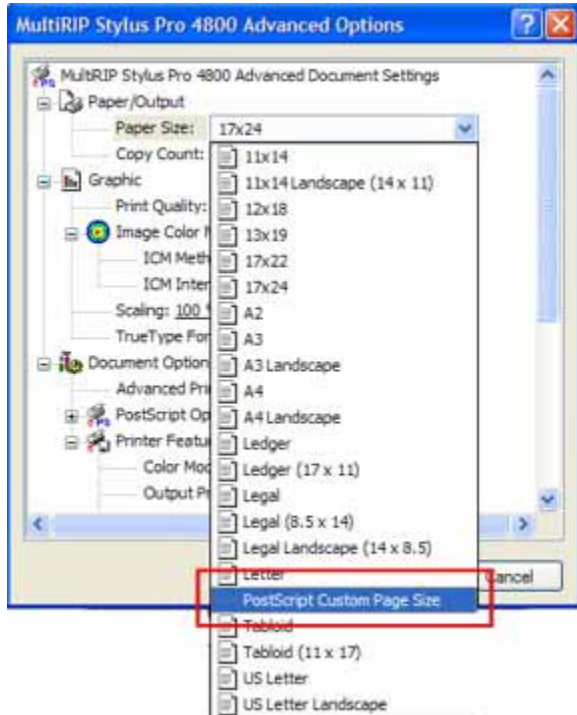
1. After selecting the MultiRIP Stylus Pro X800 printer and clicking Properties, you will need to change the Paper Source to "Roll Paper".



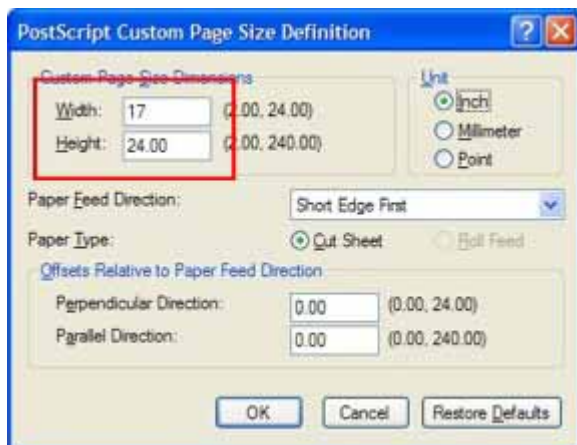
For up-to-date information, please visit the online User Forum at www.multiripusers.com.

MultiRIP

2. Then click on the Advanced button. For the Paper Size, you will want to select PostScript Custom Page Size.

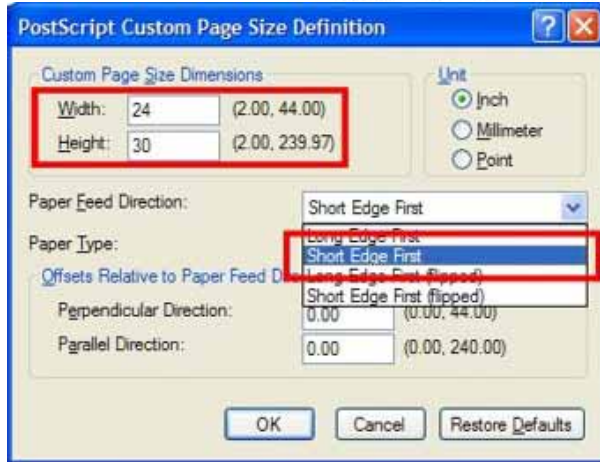


3. A new window will open up for you will put the width of the paper roll you are using and the height of the document.

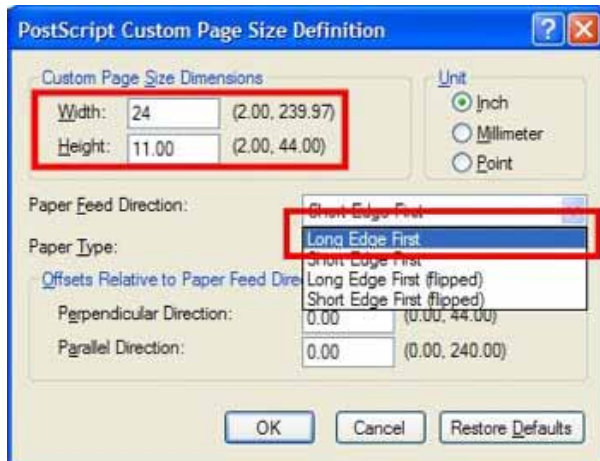


4. For the Paper Feed Direction selection, you will need to choose from “Short Edge First” or “Long Edge First”. You will choose “Short Edge First” when the width of your page size is smaller than the height.

MultiRIP



You will choose “Long Edge First” when the width of your page size is larger than the height.



NOTE: When using the Roll Paper function on the Epson 4800 and 7800 printers, the printer will automatically cut the paper to the height of your document unless you turn the cutting function off. See your Epson Printer Manual for how to do this.