

MultiRIP

APPLICATION PRINTING

Commercial Inkjet Transfers (📺 [Video Available](#))

MultiRIP is profiled for creating commercial quality inkjet heat transfers using MultiINKs for light and dark transfer papers. We have created two different profiles, Transfer (Graphics) and Transfer (Photos), and two different resolutions (Normal & Enhanced). When using most transfer papers, you will want to create a test sample to determine what profile and resolution looks the best.

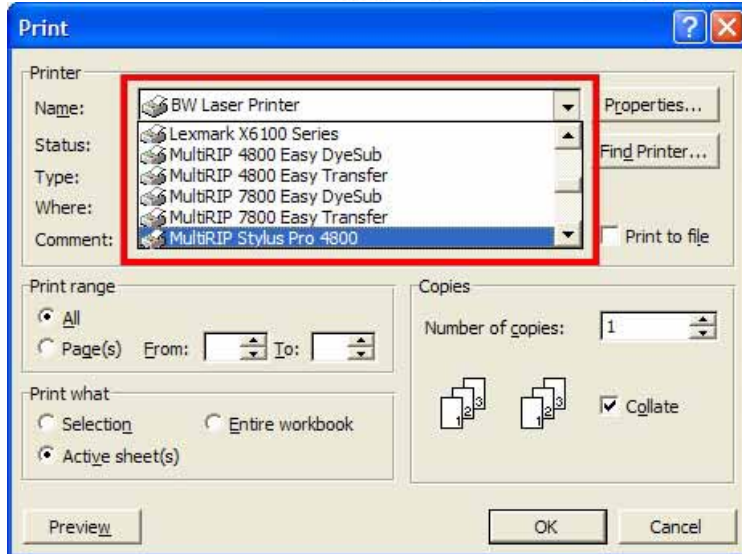
Step-by-Step Instructions

1. Open your photograph in the appropriate program. For example, we are going to use Adobe PhotoShop® for printing a photograph. Go to File Menu and down to Print.

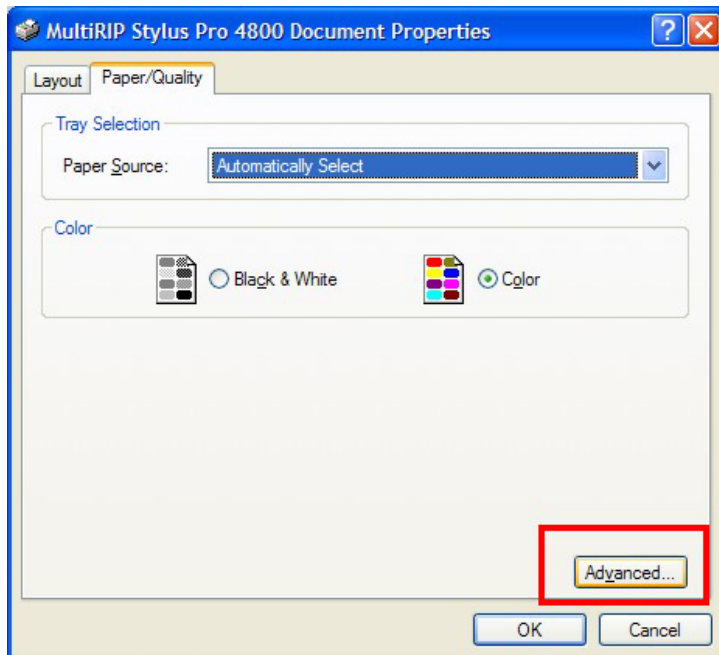


2. Select the MultiRIP Stylus Pro 4800 printer.

MultiRIP



3. Click on the Advance Tab in the bottom left corner of the window.

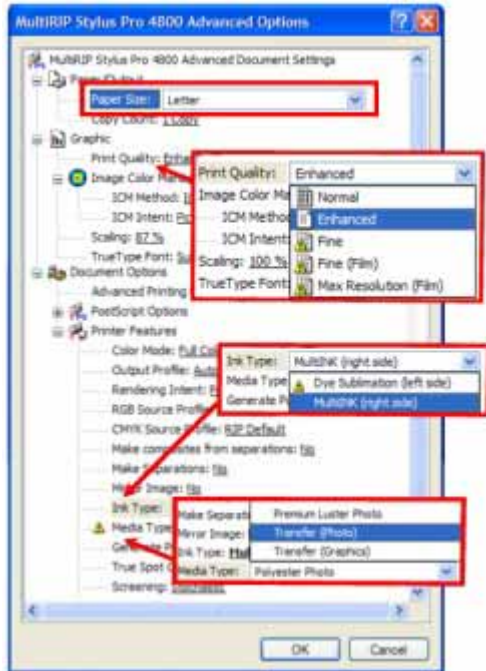


4. In the Advanced Options screen, you will need to set the following fields:

- Paper Size – Based on the size of the paper in your printer
- Print Quality – You should run test to see what setting is best for your light and dark transfer papers.
- Ink Type – Should be set to MultiINK.
- Media Type – Should be set to Transfer (Photo) or Transfer (Graphic) depending on what you are printing.

For up-to-date information, please visit the online User Forum at www.multipusers.com.

MultiRIP



Contour Cutting for Print-Cut Transfers

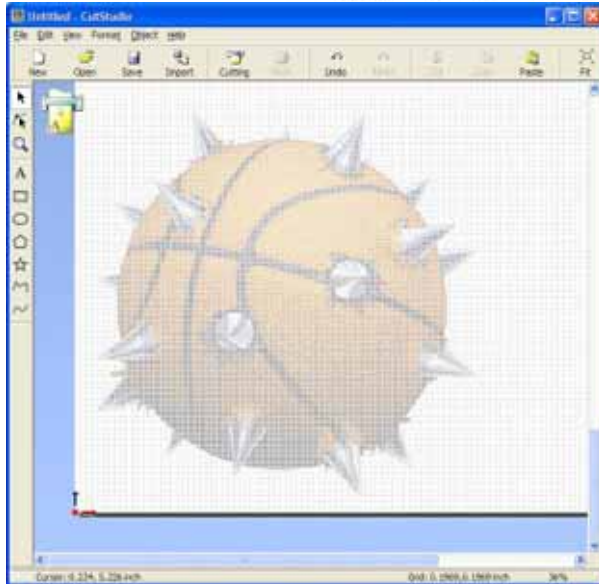
MultiRIP will work in conjunction with Roland CutStudio Software and similar programs to allow you to do print-cut inkjet transfers with your optical registration cutter. You may consider using the MultiRIP Easy Transfer print driver depending on what your graphic is and what type of transfer paper you are using. For more information, please see this section below.

NOTE: You must use a specific type of inkjet heat transfer paper that will allow you to weed (i.e. remove) the excess polymer from the paper backing.

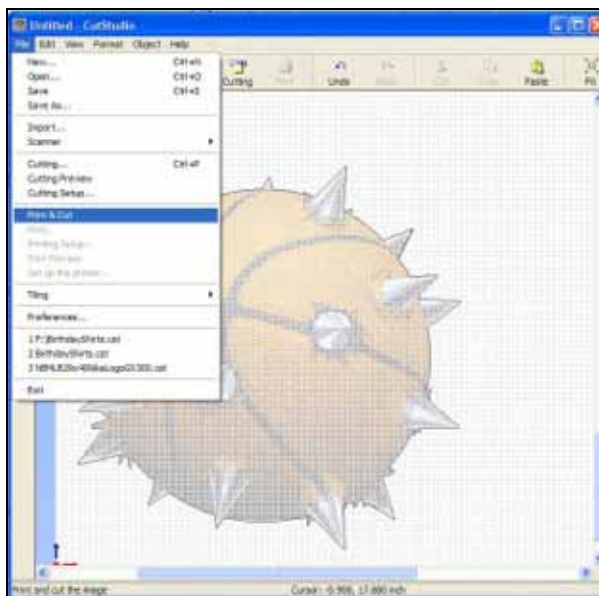
Step-by-Step Instructions

1. Import your graphic file into the cutting software program that came with your optical registration cutter.

MultiRIP

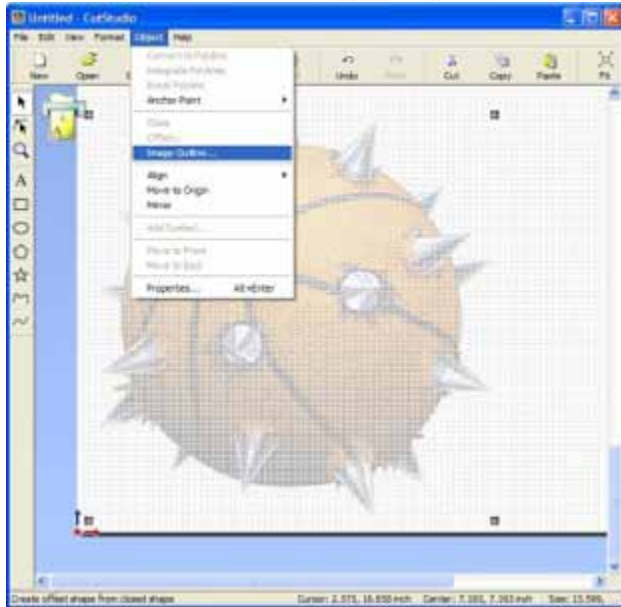


2. Go to File menu and select Print-Cut function

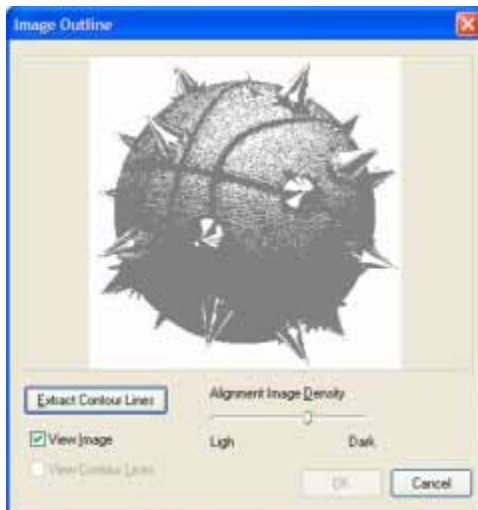


3. Click on your graphic and go to Object menu so you can select Image Outline.

MultiRIP



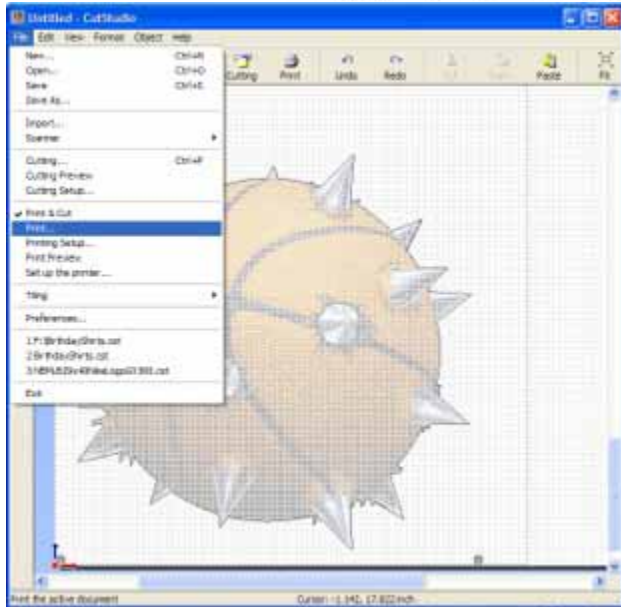
4. Slide the Alignment Image Density control so you can eliminate the cutting nodes in the inside of the graphic. Click on the Extract Contour Lines button.



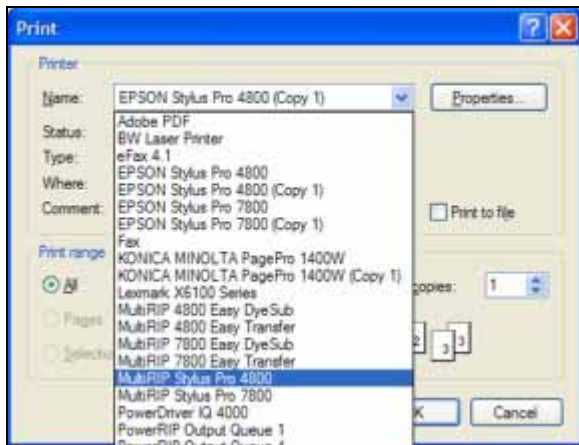
NOTE: You may have to remove or clean up the inside of your graphic if you are using a raster image.

5. Go to the File menu and select Print.

MultiRIP

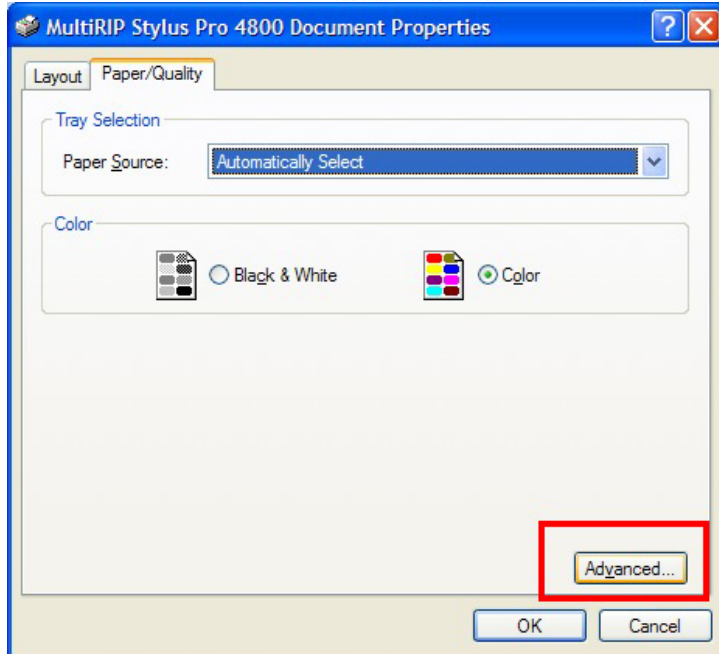


6. In the printer menu, choose the MultiRIP Stylus Pro 4800 selection. Click on the Properties (or it maybe called Preferences) button.

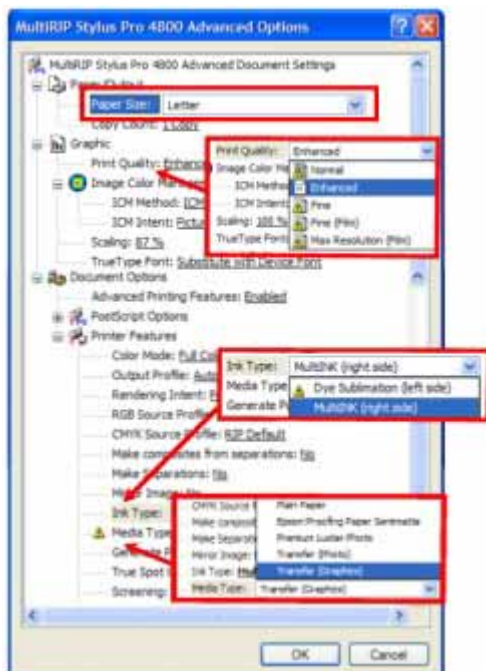


7. Click on the Advance Tab in the bottom left corner of the window.

MultiRIP



- In the Advanced Options screen, you will need to set the following fields:
 - Paper Size – Based on the size of the paper in your printer
 - Print Quality – This should be set to Enhanced
 - Mirror Image – If you are using Light Transfer paper, then this should be Yes. If you are using Dark Transfer paper, then this should be No.
 - Ink Type – Should be set to MultiINK.
 - Media Type – Should be set to Transfer (Photo) or Transfer (Graphic).



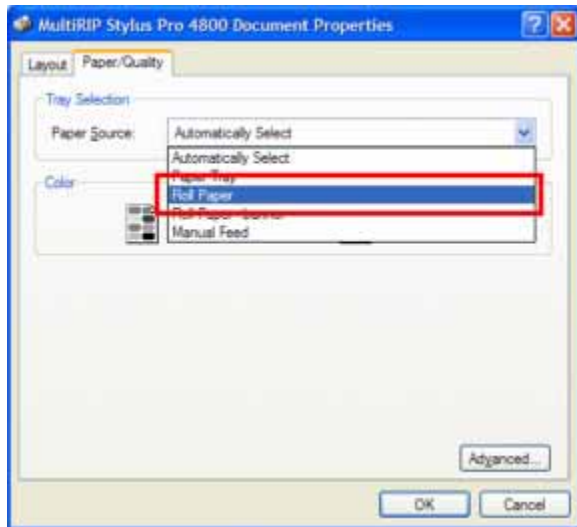
For up-to-date information, please visit the online User Forum at www.multipusers.com.

MultiRIP

Roll Media Step-by-Step Instructions

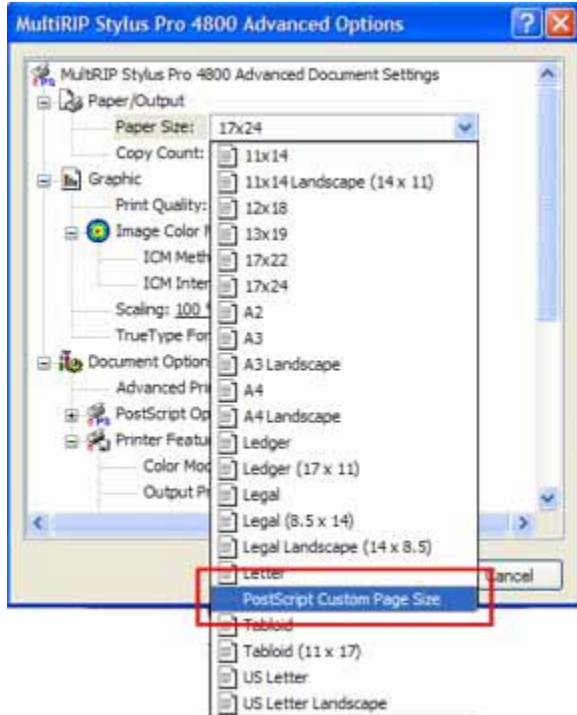
When printing from a roll of sublimation paper, you should do the following additional steps to set up your printer to accept roll feed.

1. After selecting the MultiRIP Stylus Pro X800 printer and clicking Properties, you will need to change the Paper Source to “Roll Paper”.

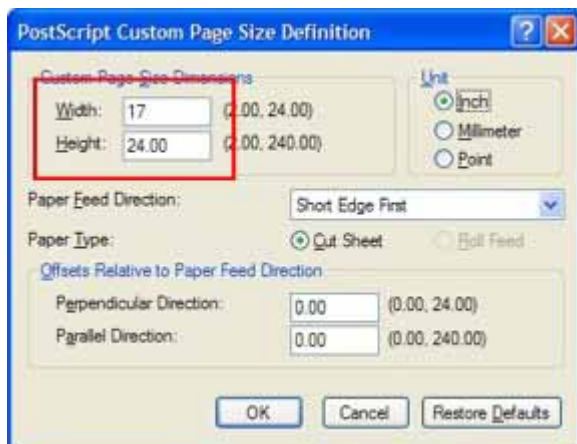


2. Then click on the Advanced button. For the Paper Size, you will want to select PostScript Custom Page Size.

MultiRIP

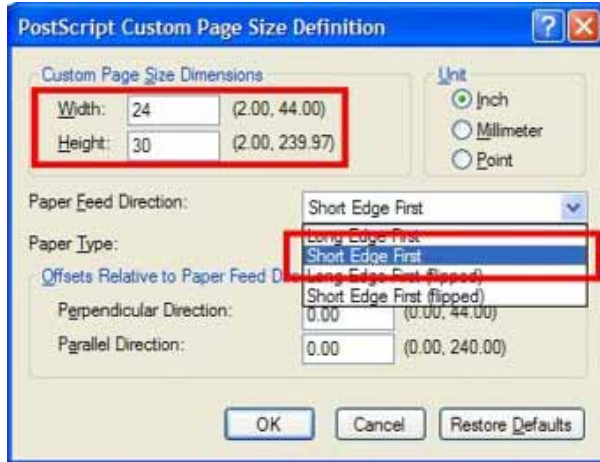


3. A new window will open up for you will put the width of the paper roll you are using and the height of the document.

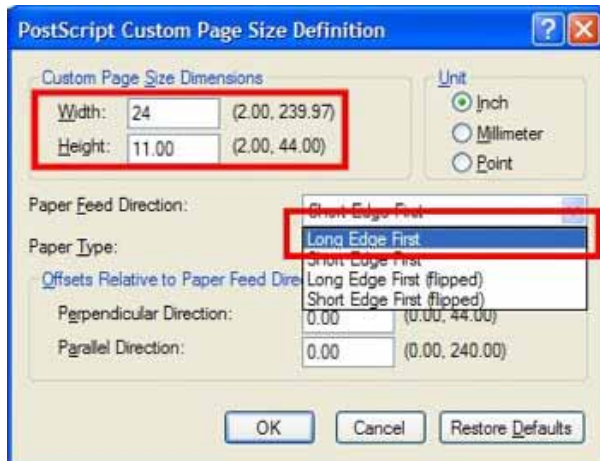


4. For the Paper Feed Direction selection, you will need to choose from “Short Edge First” or “Long Edge First”. You will choose “Short Edge First” when the width of your page size is smaller than the height.

MultiRIP



You will choose “Long Edge First” when the width of your page size is larger than the height.



NOTE: When using the Roll Paper function on the Epson 4800 and 7800 printers, the printer will automatically cut the paper to the height of your document unless you turn the cutting function off. See your Epson Printer Manual for how to do this.

EASY PRINT BUTTONS (📺 Video Available)

MultiRIP has created two additional print drivers to make it easier for you to print standard inkjet and dye sublimation transfers. The MultiRIP x800 Easy Dye Sub and Easy Transfer printers are preset configurations that allow you to save time when doing standard jobs. Below are the settings for both of these printers.

NOTE: Some of the Easy Print driver settings can be changed or set as a default. These settings are Paper Size, Scaling and Mirrored Output. All the other settings are locked and cannot be changed.

Transfer Easy Print Settings

For up-to-date information, please visit the online User Forum at www.multiripusers.com.

MultiRIP

Ink Type – MuiltINK™
Media Type – Transfer (Photo)
Resolution – Enhanced (720 x 720 dpi)
Mirror Image – Yes
Print Direction – Bi-Directional
Screening – Stochastic