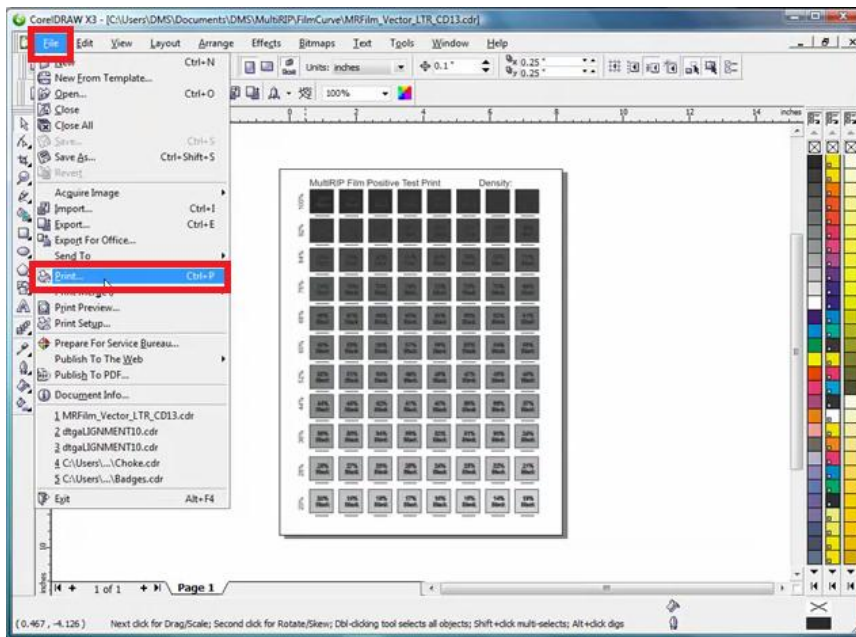


MultiRIP Film

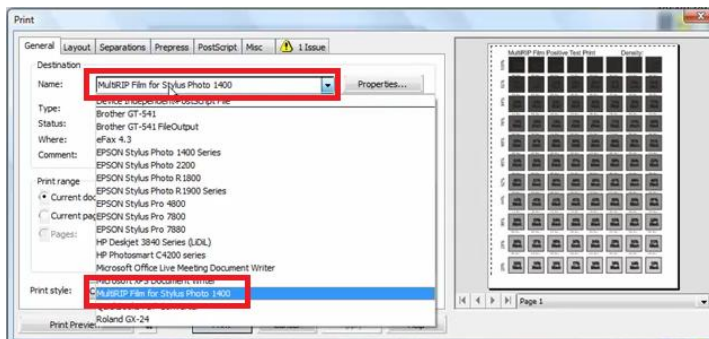
How to Print from CorelDraw® to MultiRIP Film?

NOTE: Printing from different versions of CorelDraw may require some changes to the steps or the screens might look slightly different.

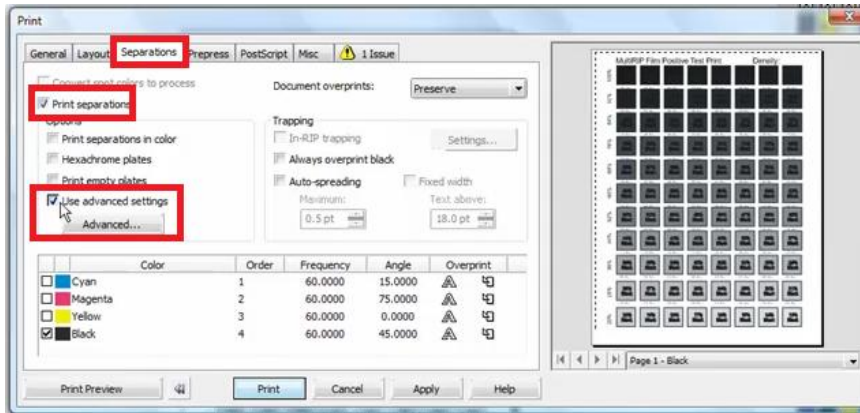
1. Create your graphic in CorelDraw®. It is recommended that you create your graphic using a Pantone color chart so the spot colors will show up in the Separations tab in CorelDraw®.
2. Go to the File Menu and click on the Print selection.



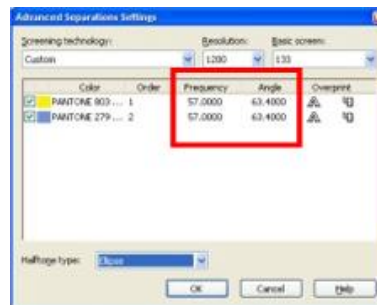
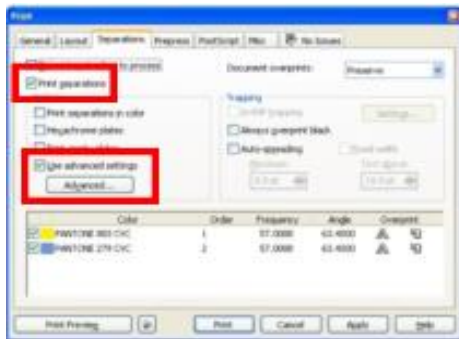
3. Select the MultiRIP Film™ printer you have installed on your computer.



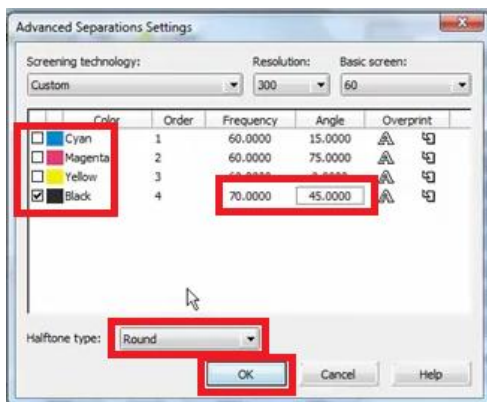
4. Click on the Separations tab at the top of this window. Check the box “Print Separations”, which will activate the selections below. Then, you will check the box “Use Advanced Settings” and click on the Advanced button.



NOTE: If you are using spot colors, you will see the Pantone color listed as illustrated below:

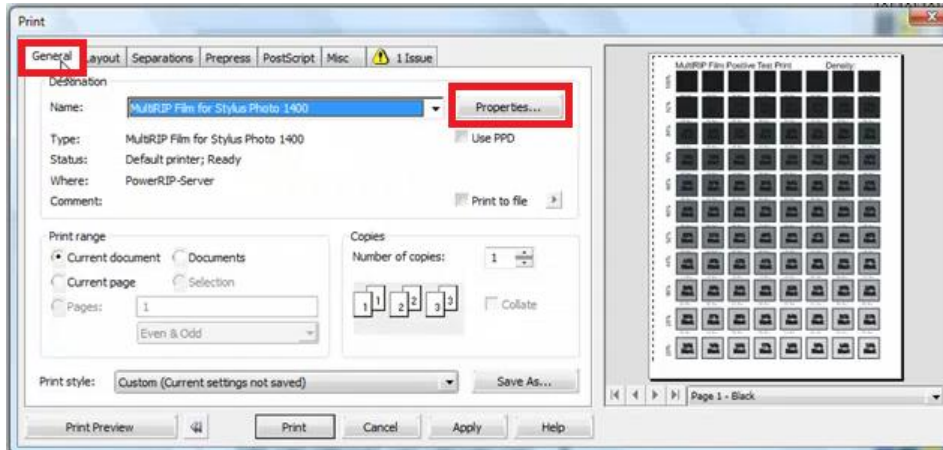


6. If you are going to use the Document Defined Settings, you will choose which colors you want to print in the Advanced button; as well as make the changes to the Frequency, Angle and Dot Shape for each color. Otherwise, the default settings will be used with the RIP Defined setting. Click the OK button when you are finished.

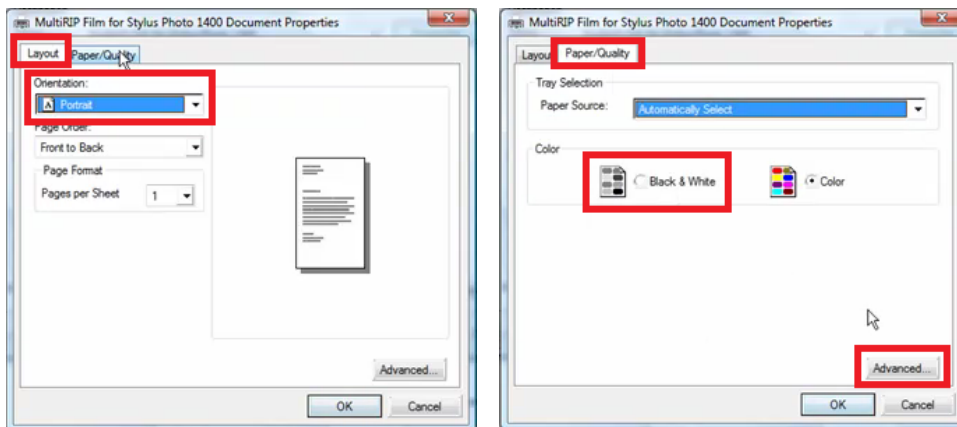


Note: It is recommended that all the colors use the same Frequency and Angle settings when doing textile screen printing.

7. Go back to the General tab in the printer menu and click on the Properties button.



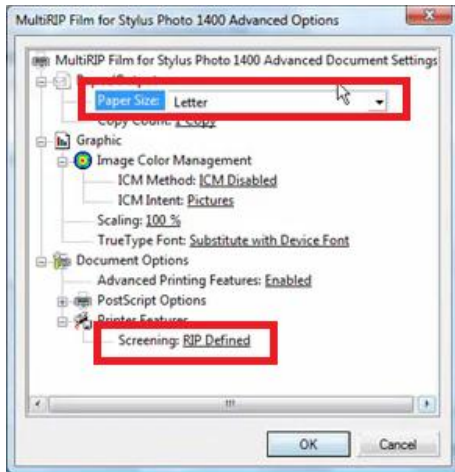
8. In the Properties window, you will need to make settings to the Layout and Paper Quality Tabs. Then click on the Advanced button in the bottom right corner.



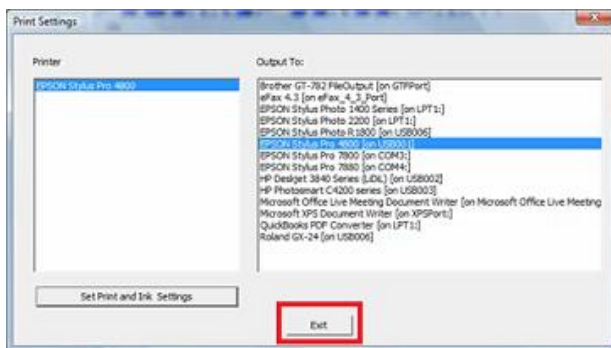
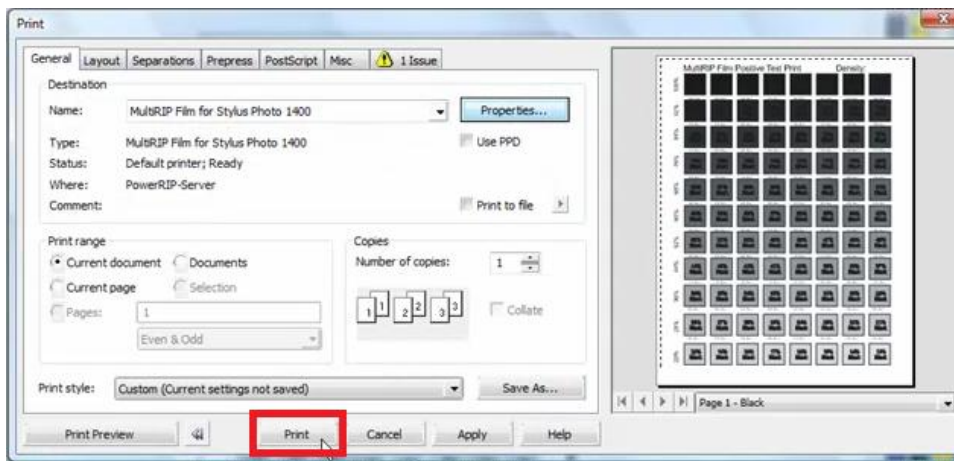
NOTE: CorelDraw® has problems sending the Landscape command to a Print To Postscript driver. So you will want to leave the Orientation field set to Portrait and use a custom postscript page size for your paper size.

9. In the Advanced screen, set the following settings below and then click the OK buttons till you get back to the CorelDraw® print window.

- Paper Size – the size of the film you are using
- Screening – set this to either RIP Defined (if you want to use the default settings you set up in the RIP) or Document Defined Halftone (if you want to use the halftone settings in the graphic software – see Step #6).



10. Click the Print button to send the job to the MultiRIP Film™ printer.



For additional technical support information, please visit the Frequently Asked Questions page (www.multirip.com/#MRF_FAQ) or contact your Distributor.