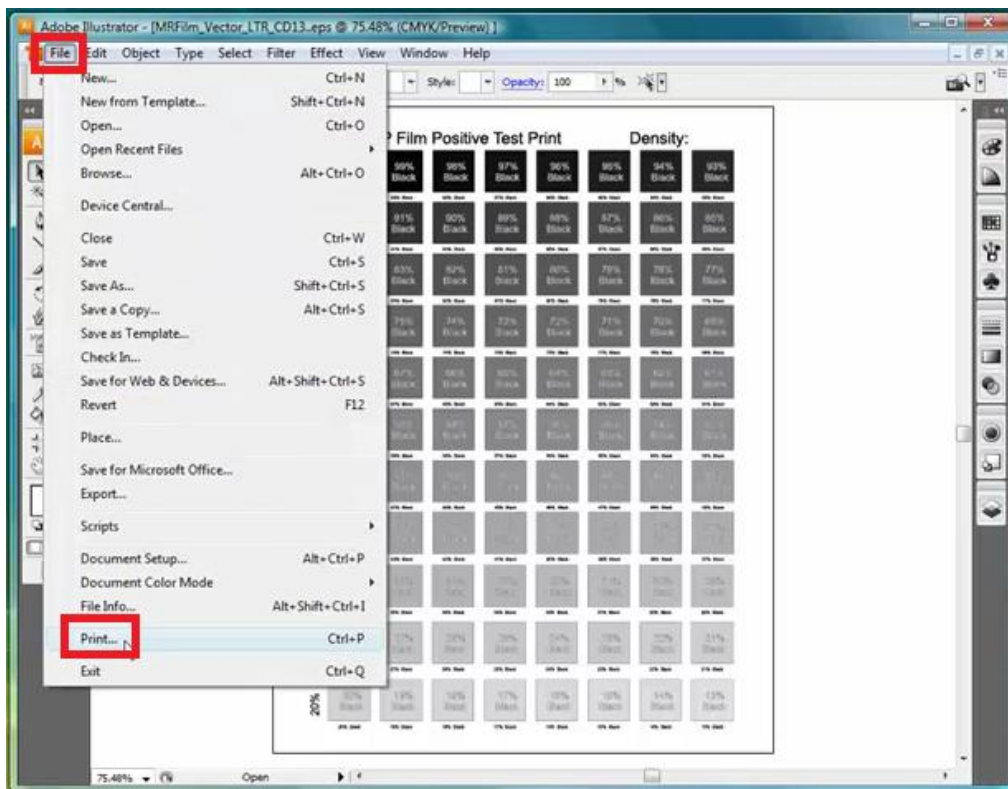


# MultiRIP Film

## How to Print from Illustrator® to MultiRIP Film?

NOTE: Printing from different versions of Illustrator® may require some changes to the steps or the screens might look slightly different.

1. Create your graphic in Illustrator®. Click on the File menu and select Print.

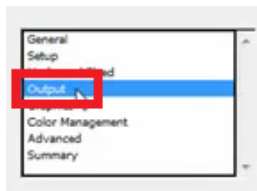


NOTE: In earlier versions of Illustrator®, you may need to click the Print Preview option to see the Output menu in the next step.

2. The Print or Print with Preview window may look different depending on which version of Illustrator® you are using. You will first want to find the option that allows you to select your printer. Some versions may require you to click the Page Setup button.



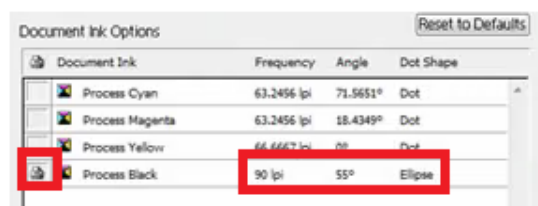
3. The look for either a drop-down box or selection area where you can select the Output option. The location will be different depending on which version of Illustrator® you are using.



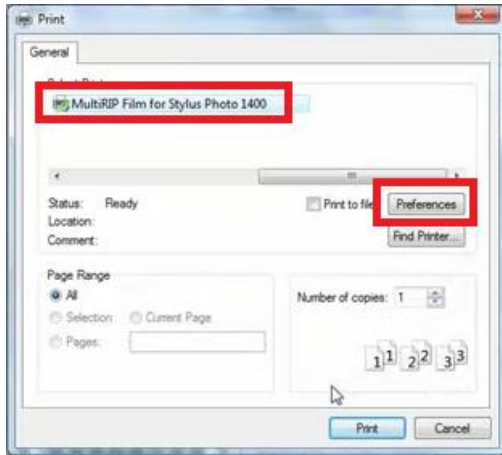
4. In the Output menu, you should have the ability to select the Mode, Emulsion and Image fields. For textile screen printing, you will want to set the Mode field to Separations (Host-Based), Emulsion field to Up (Right Reading) and Image field to Positive.



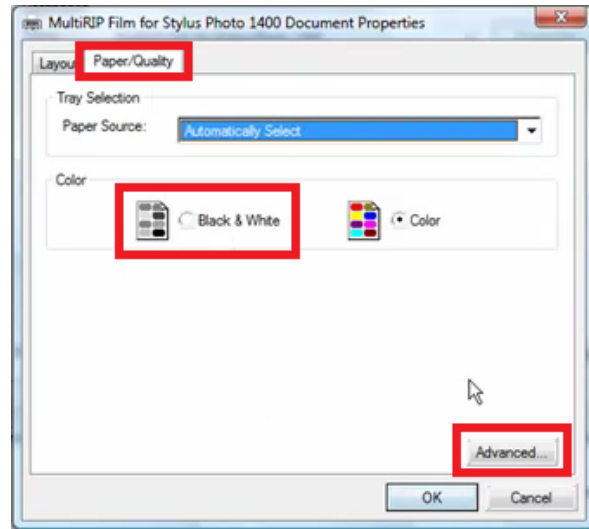
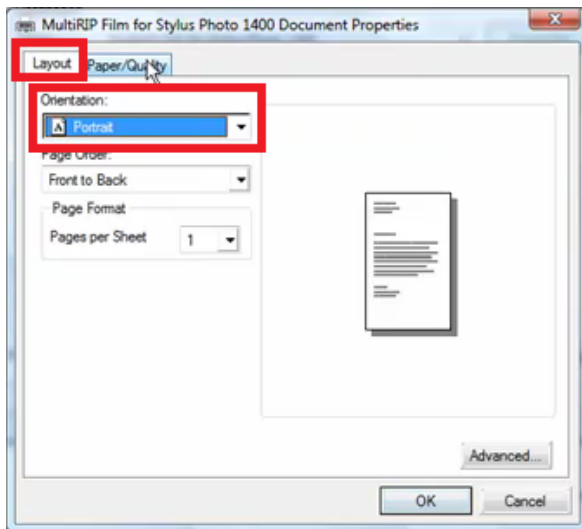
5. If you plan to use the Document Defined setting in Step #, you will want to set your frequency, angle and dot shape in this area. Select which colors you want to print by checking the box on the left of the color and they put your cursor in the other three fields for that color to make changes.



6. Click on the Page Setup button to select the MultiRIP Film™ printer. Then click on the Preferences button.



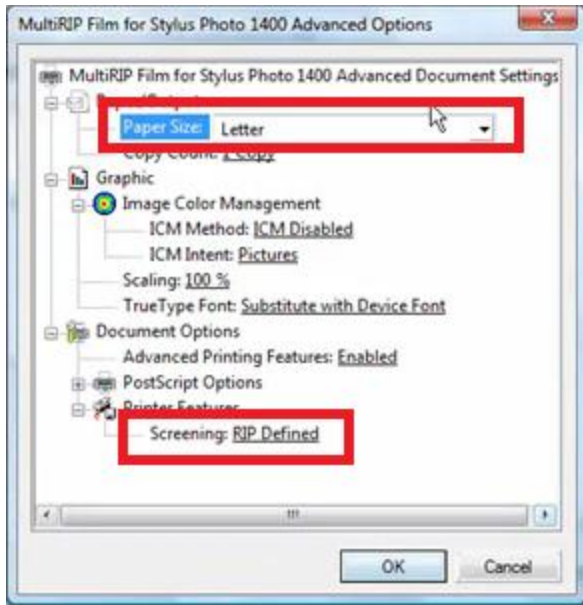
7. In the Preferences window, you will need to make settings to the Layout and Paper Quality Tabs. Then click on the Advanced button in the bottom right corner.



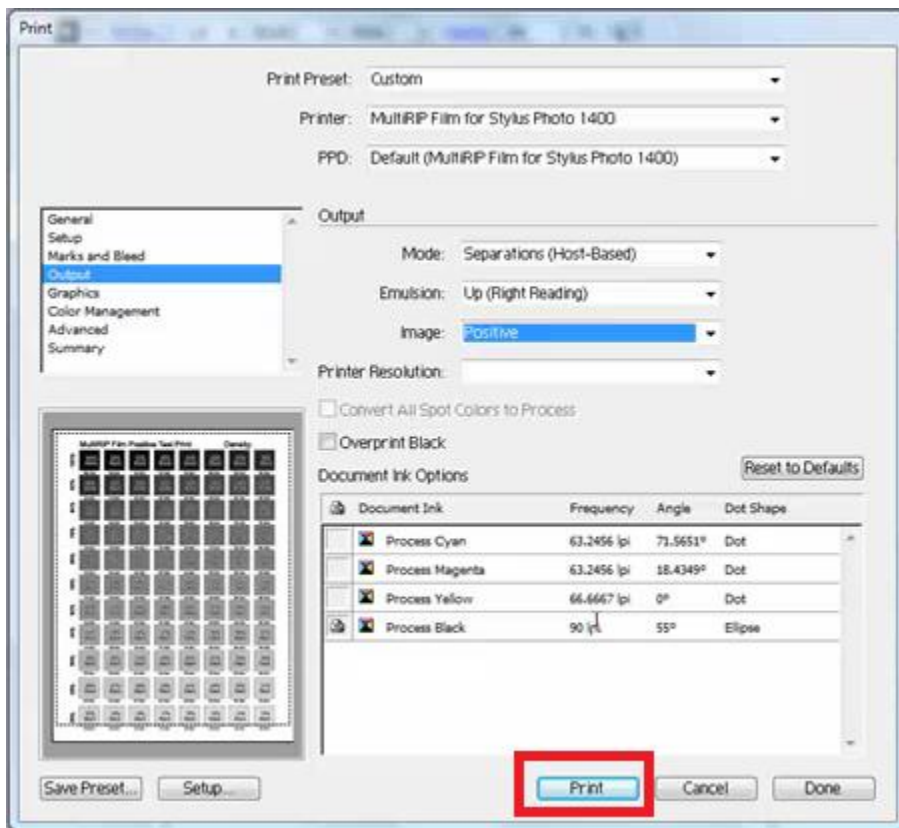
8. In the Advanced screen, set the following settings below and then click the OK buttons until you get back to the Photoshop® print window.

Paper Size – the size of the film you are using

Screening – set this to either RIP Defined (if you want to use the default settings you set up in the RIP) or Document Defined Halftone (if you want to use the halftone settings in the graphic software – see Step #5 & 6 above).



9. Click the Print button to send the job to the MultiRIP Film™ printer.



For additional technical support information, please visit the Frequently Asked Questions page ([www.multirip.com/#MRF\\_FAQ](http://www.multirip.com/#MRF_FAQ)) or contact your Distributor.