

MultiRIP Film

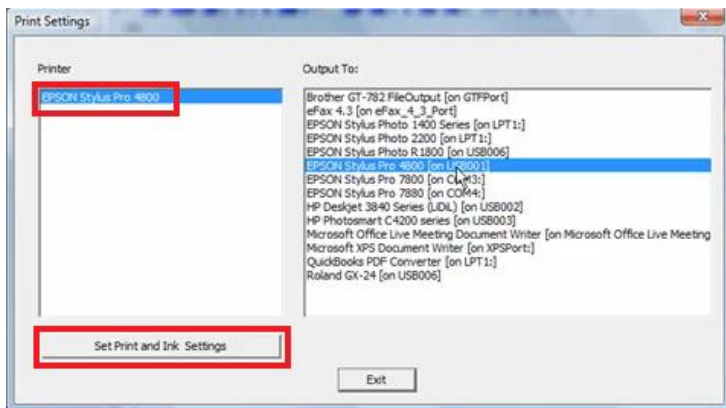
How to Setup the Ink Configuration in MultiRIP Film?

MultiRIP Film™ allows users to setup their printer up using as little as one channel of black ink to as many as all channels of black ink. To setup your printer, you will need to tell the RIP software the number of ink channels to pull ink from. Below are the instructions for setting up your printer's ink configuration.

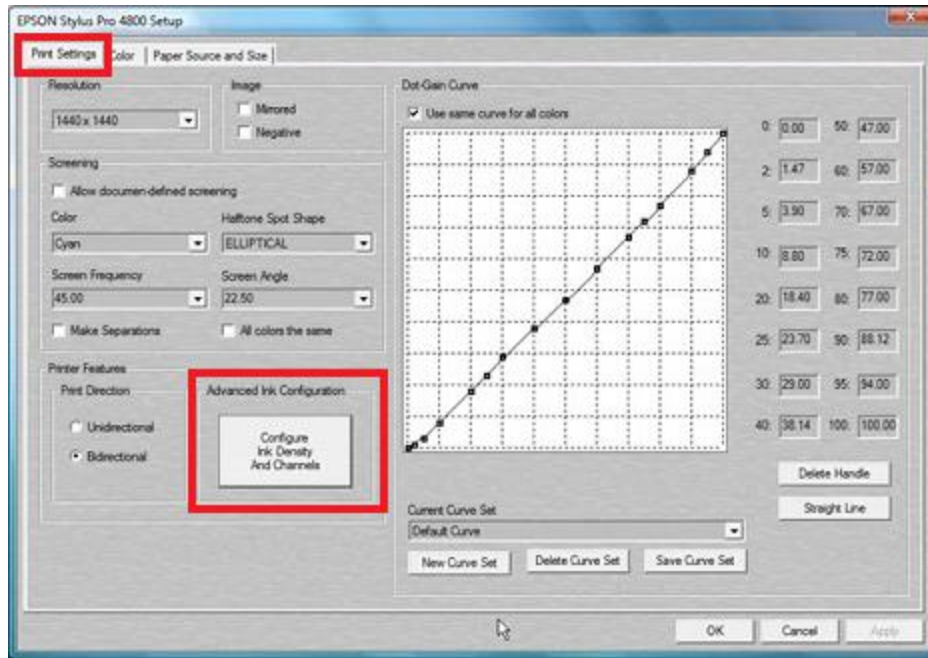
Step #1: Open the MultiRIP Film™ Interface. Click on the Configure menu and select Print Settings.



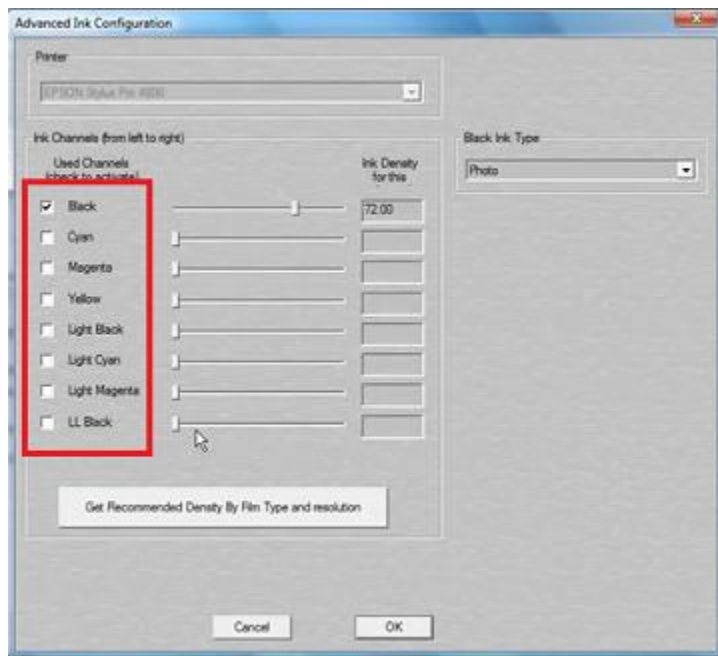
Step #2: In the left column, select the MultiRIP Film™ printer you want to set the RIP Defined settings. Then click on the “Set Print and Ink Settings” button.



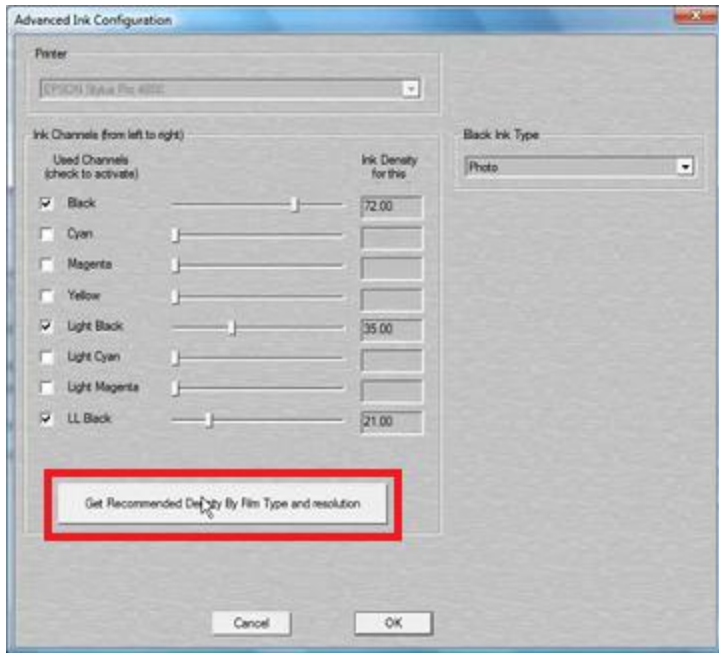
Step #3: The Printer Setup screen will open up. Locate the Advanced Ink Configuration box in the Print Setting tab and click on the button to configure ink density and channels.



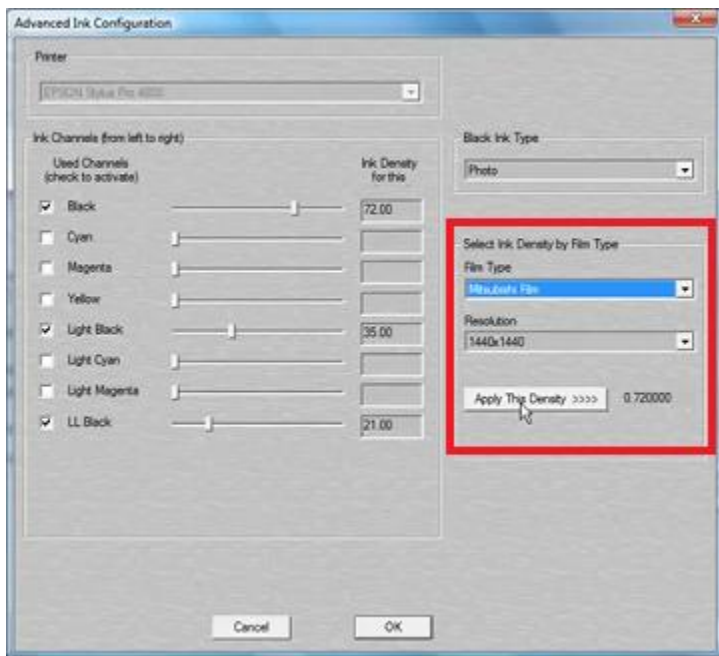
Step #4: In the Advanced Ink Configuration screen, check the boxes from which you have black ink loaded. If you are using a standard Epson ink setup with Epson OEM ink, then just check the Black channel.



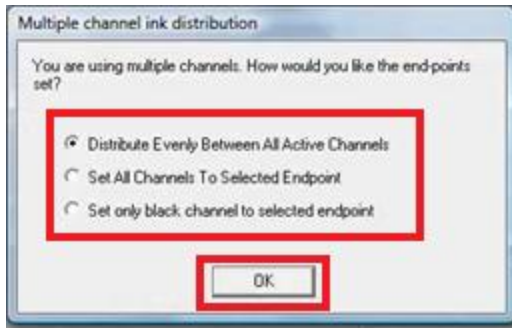
Step #5: Once you have your ink channels selected, click on the “Get Recommended Density by Film Type and Resolution” button.



Step #6: On the right side of the window, the Film Type and Resolution fields will show up. Select the Film Type and Resolutions fields. Then click the “Apply The Density” button.



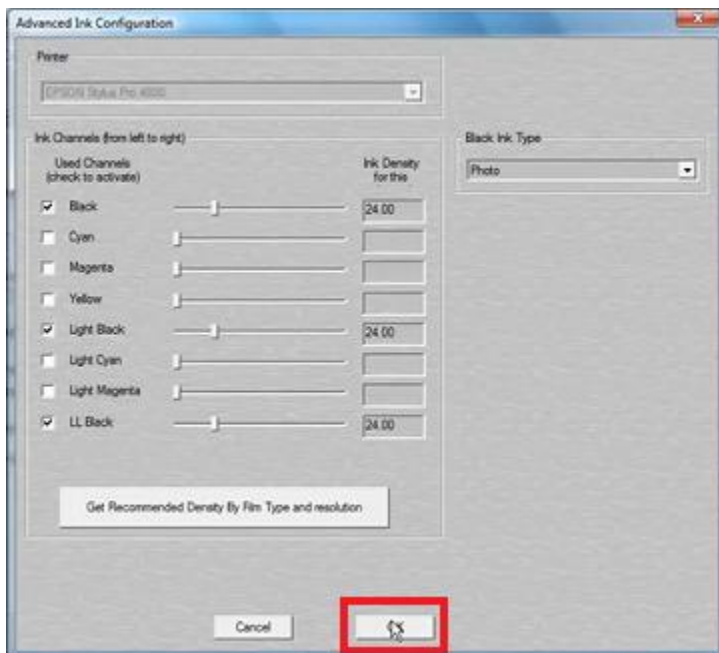
Step #7: The Multiple Channel ink distribution window will open up. You will have three options to choose from to distribute the ink from the channels. Choose the appropriate option for your printer setup. Click the OK button when you are ready to continue.



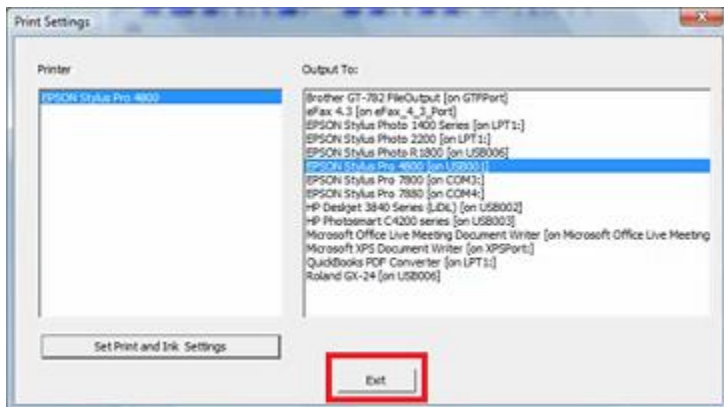
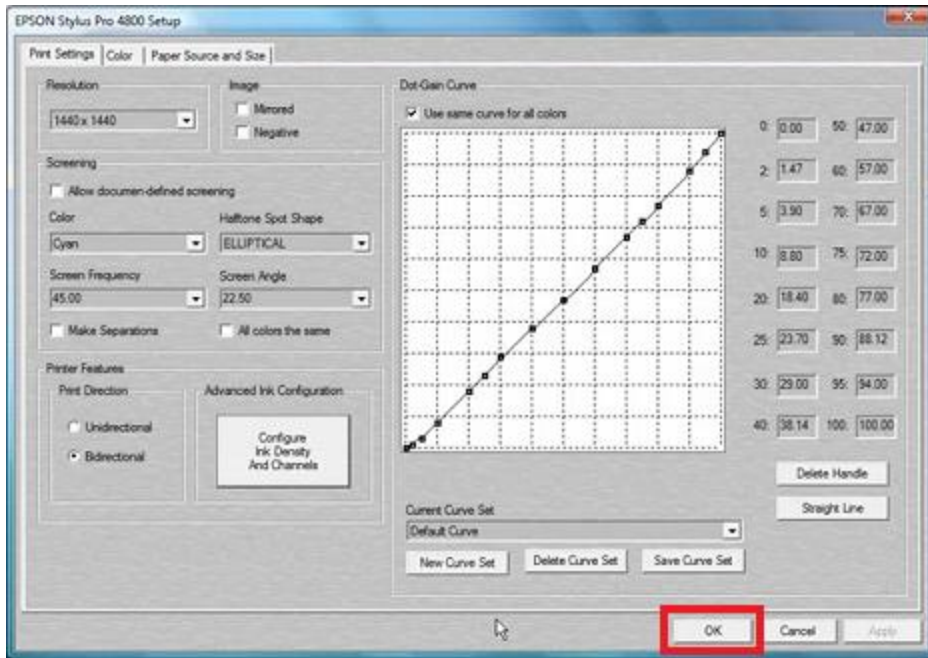
NOTE: Below is detailed information about the three options:

- **Distribute Evenly Between All Active Channels** – this is recommend setting when using multiple ink channels for a film brand listed. This will spread the endpoint out across all the selected ink channels evenly.
- **Set All Channels to Selected Endpoint** – this will move all selected ink channels to the density point of the film. This is not recommended when you have multiple channels selected and are using one of the existing products.
- **Set only the black channel to the selected endpoint** – this is the default setting where ink is only pulled from the Black ink channel at the density amount.

Step #8: The endpoints for the selected ink channels will change depending on the selection based on Step #7. Click the OK button to continue.



Step #9: Click the OK button in the Setup Screen and the Exit button in the Print Settings window.



For additional technical support information, please visit the Frequently Asked Questions page (www.multirip.com/#MRF_FAQ) or contact your Distributor.