

MultiRIP Film

Download and Install Instructions for MultiRIP Film RIP Software

DOWNLOAD MULTIRIP FILM

Users can always download the latest version of MultiRIP Film from the internet. [Click here](#) to visit the MultiRIP website page to download the software. Due to the size of the software program, a high-speed internet access is required. If a user does not have access to high-speed internet, the user may pay for a CD with the software on it to be delivered to their address. Cost may vary depending on the location and the shipping method requested. Email orders @ multiRIP.com (remove spaces) for specific costs on shipping a CD.

Instructions for Downloading MultiRIP Film

Step #1: Once you have located the download page, click on the link that states “Download MultiRIP Film RIP Software”.

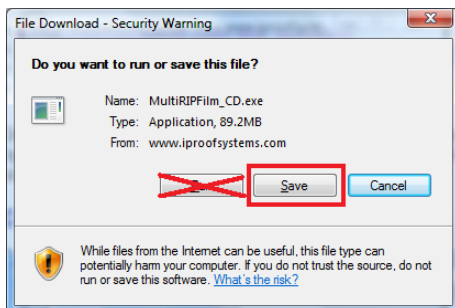
Installation and Technical Information for MultiRIP Film Software

Below are the links to where you can download an trial version (fully functional, but prints a watermark) software of MultiRIP Film software, installation instructions and the technical support videos.

- * [Download MultiRIP Film RIP Software](#)
- * MultiRIP Film Installation Instructions ([Video](#) | [PDF](#))
- * [FAQs for MultiRIP Film RIP Software](#)
- * [How-To MultiRIP Film Technical Support Videos](#)

Only users with a paid license have access to telephone support. For questions by evaluation users, please complete the form below. All emails will be answered as soon as possible.

Step #2: A download window will open up. Make sure that you save the application to your desktop.

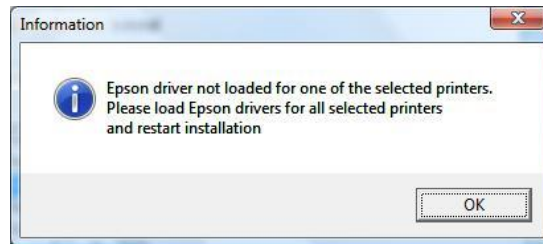


NOTE: Do NOT try to run the install application directly from the internet.

INSTALL MULTIRIP FILM

Required Pre-Installation Steps

Step #1: Before Installing the MultiRIP Film software, you must have the Epson print driver for the printer being used already installed. If the Epson driver is not already installed, you will get the following error message during the install process:



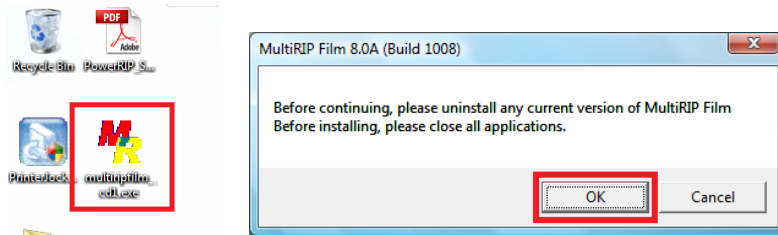
You can download the Epson driver from the Epson website (www.epson.com).

Step #2: You will want to make sure that you disable any anti-virus or permission based software programs before you begin the install process. Once the install process has been completed, the software will ask you to restart your computer and this typically will turn back on the disabled programs.

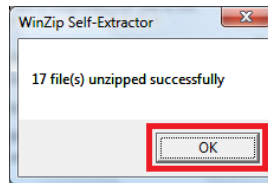
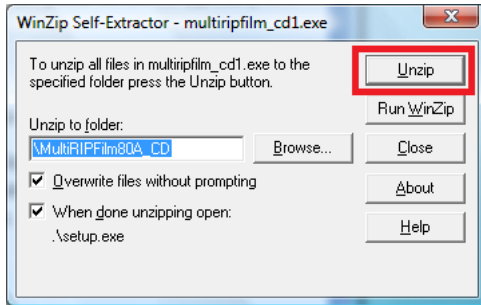
Installation Steps

NOTE: If you are installing the software from a CD, skip to Step #3.

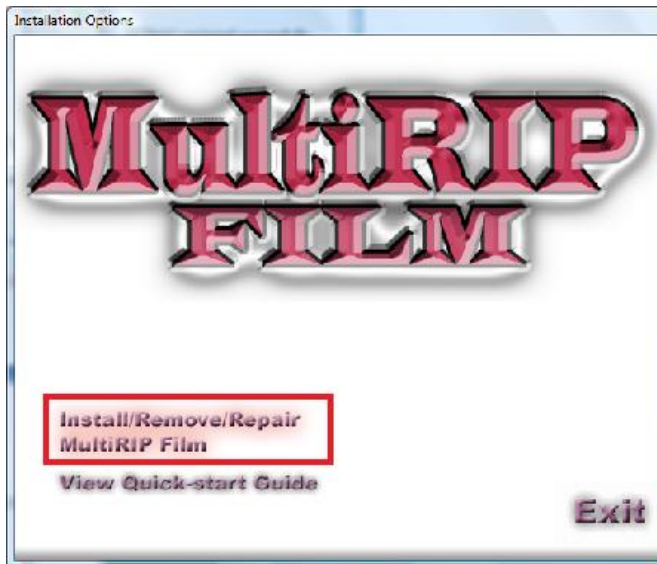
Step 1: Locate the MultiRIP Film icon on your desktop. Double click on icon. You will get a pop-up window that will verify that you are not running an existing version of the software on the computer already. Click "Ok" to continue.



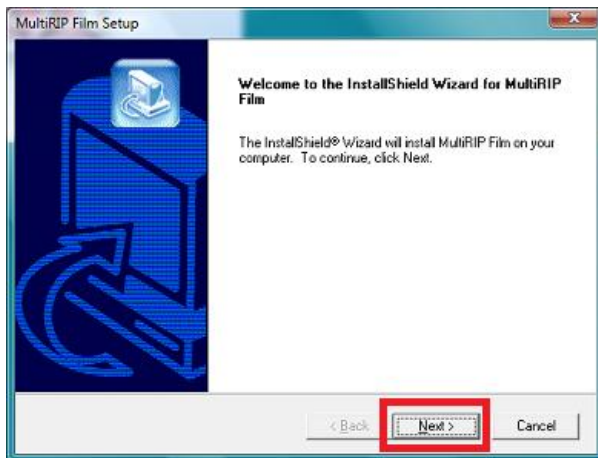
Step #2: The Self-Extractor package will open a window and you will want to click on the Unzip button. Once the files are unzipped, you will get a message stating this. Click the OK button.



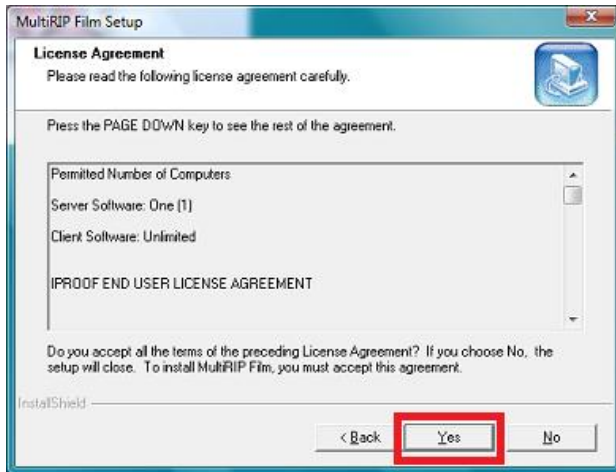
Step #3: The MultiRIP Film Installer will open up and then you will want to click on the “Install, Repair & Remove” link.



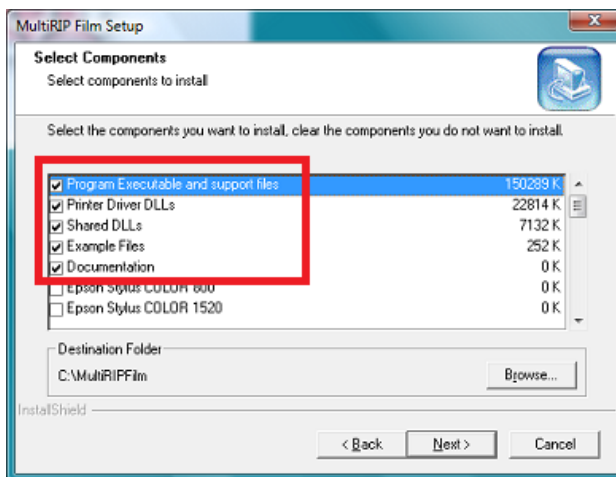
Step #4: The next screen is the Install Shield Wizard and you will need to click the Next button to proceed.



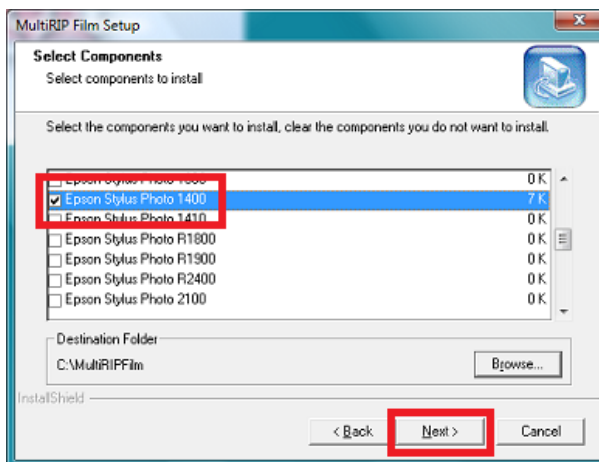
Step #5: The License Agreement screen is next. All users must agree to proceed before. Click Yes to agree the License Agreement.



Step #6: The next screen will ask you to select the components (i.e. printers) to install. **Do not uncheck the boxes at the top of the screen.**

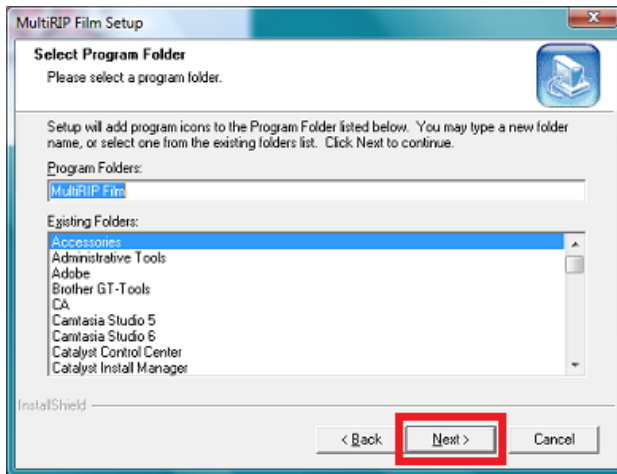


Scroll through the list and check the box to the left of the printers you want MultiRIP Film to work with.

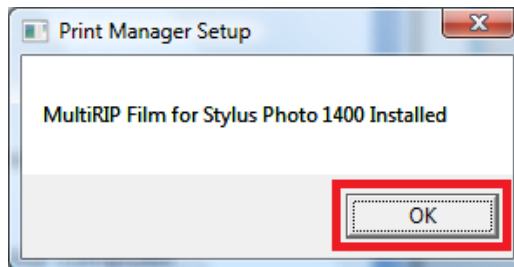
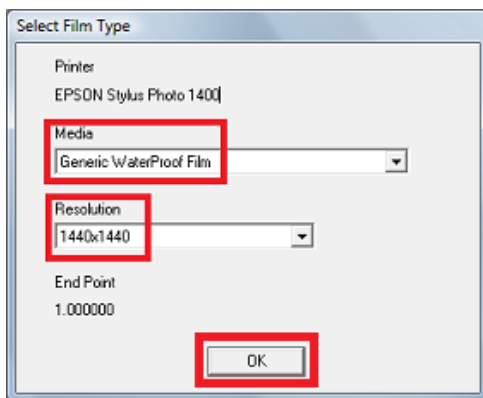


NOTE: There are two versions of the MultiRIP Film software: Medium Format (17" and below printers) and Large Format (24" and wider printers). Installing the wrong format of the software will prevent you from validating the software correctly.

Step #7: The Program Folder screen is next and you will want to leave the default settings. Click the Next button.

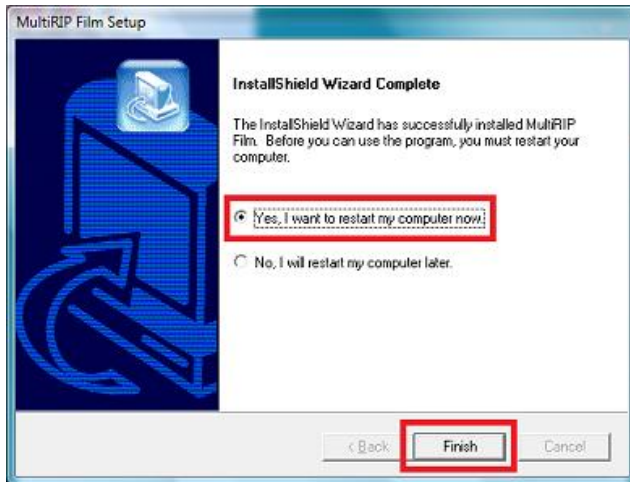


Step #8: Next, you will select the Film Type (Media) and Resolution for each printer you selected in Step #6 above.



NOTE: These will be the default settings, but can be changed later when creating your RIP Defined Settings.

Step #9: Once the install has finished, you will be prompted to restart your computer. You must restart the computer before using the software because new print drivers have been installed.



For additional technical support information, please visit the Frequently Asked Questions page (www.multirip.com/#MRF_FAQ) or contact your Distributor.