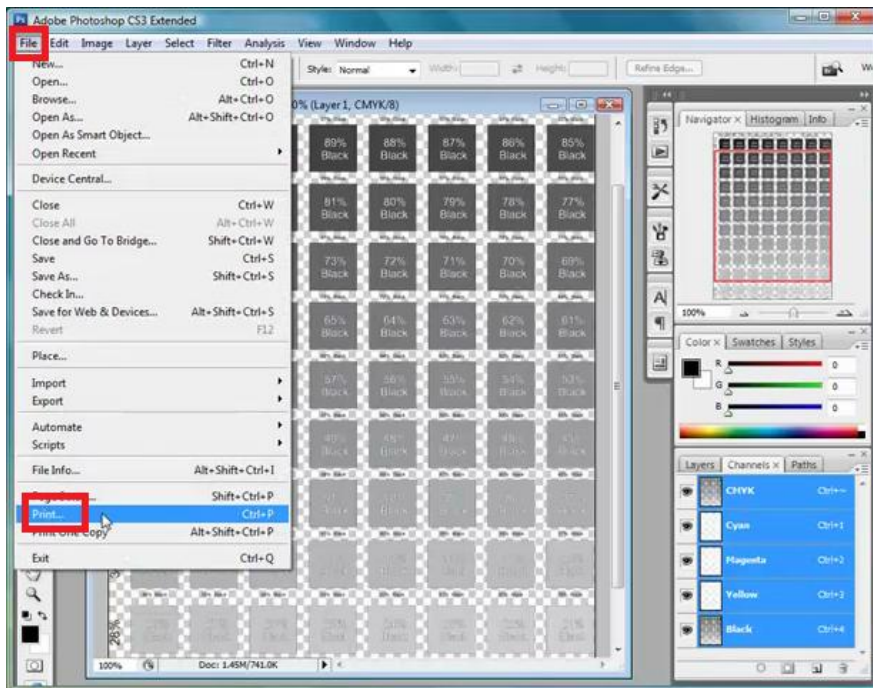


MultiRIP Film

How to Print from Photoshop® to MultiRIP Film?

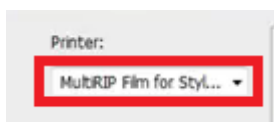
NOTE: Because Photoshop® is a raster graphics program, we recommend you use the RIP Defined settings when printing halftones. [Click here](#) to see the instructions on setting up the RIP Defined settings.

1. Create your graphic in Photoshop®. Click on the File menu and select Print.

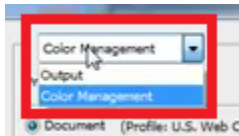


NOTE: In earlier versions of Photoshop®, you may need to click the Print Preview option to see the Output menu in Step #3 below.

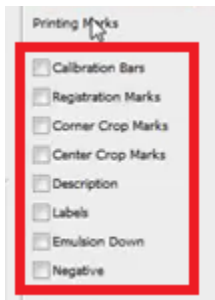
2. The Print or Print with Preview window may look different depending on which version of Photoshop® you are using. You will first want to find the option that allows you to select your printer. Some versions may require you to click the Page Setup button.



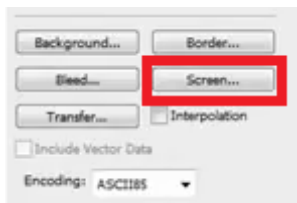
3. Then look for a drop-down box that has “Color Management” and “Output” listed. Select the Output option.



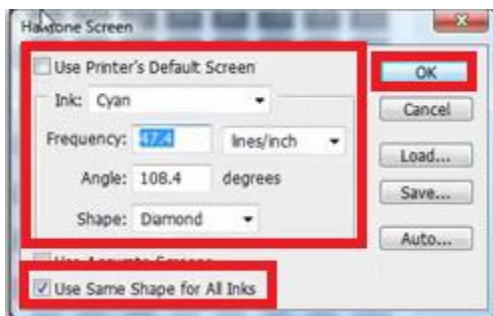
4. Under the Output options, you can select the options for printing Registration Marks or other settings you desire.



5. If you want to use the Document Defined settings (i.e. halftone settings in Photoshop®), then find the Screen button under the Output options and click on it.



6. In the Screen window, you will need to uncheck the box next to Use Printer’s Default Screen. Then you can adjust the frequency, angle and dot shape for each color. Click OK button when you are done.

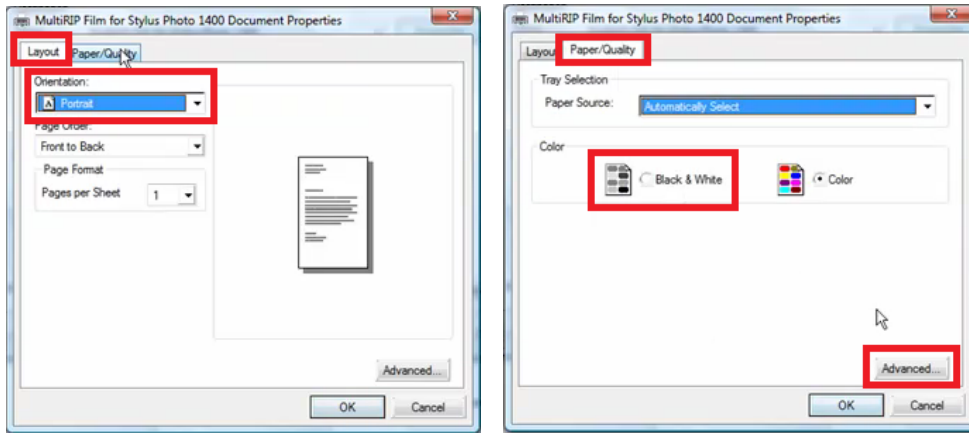


NOTE: For textile screen printing, it is recommended that you use the same frequency and angle for all colors.

7. Next, most version of Photoshop® will require you to click on the Page Setup button to set your Paper Size and Screening settings. Click on the Page Setup button.



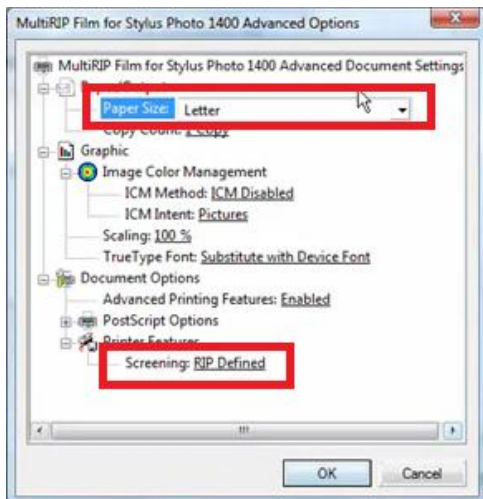
8. In the Properties window, you will need to make settings to the Layout and Paper Quality Tabs. Then click on the Advanced button in the bottom right corner.



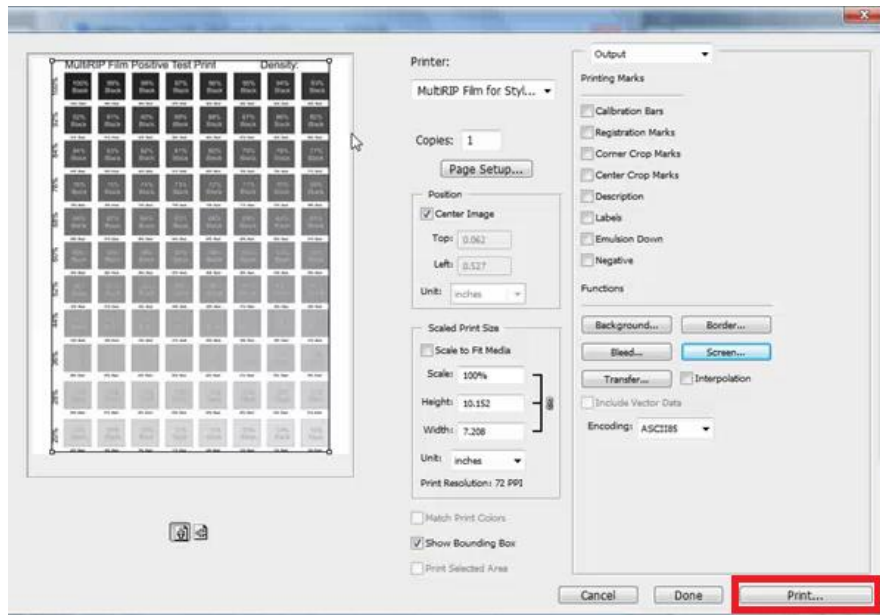
9. In the Advanced screen, set the following settings below and then click the OK buttons until you get back to the Photoshop® print window.

Paper Size – the size of the film you are using

Screening – set this to either RIP Defined (if you want to use the default settings you set up in the RIP) or Document Defined Halftone (if you want to use the halftone settings in the graphic software – see Step #5 & 6 above).



10. Click the Print button to send the job to the MultiRIP Film™ printer.



In some versions of Photoshop®, you will get a Print window that you will select the Printer and then click the Print button.



For additional technical support information, please visit the Frequently Asked Questions page (www.multirip.com/#MRF_FAQ) or contact your Distributor.