

# MultiRIP Film

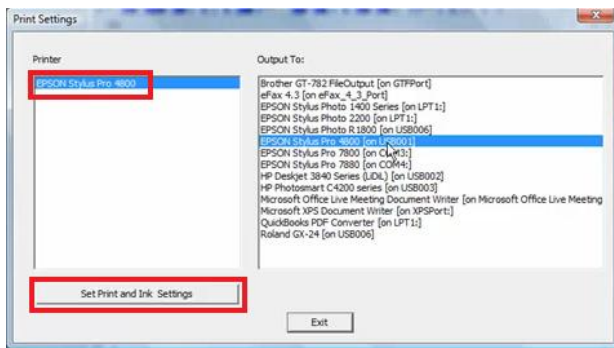
## How to create RIP Defined Settings in MultiRIP Film?

MultiRIP Film™ allows the user to create default settings (called RIP Defined Settings) to allow for faster and easier printing of film positives.

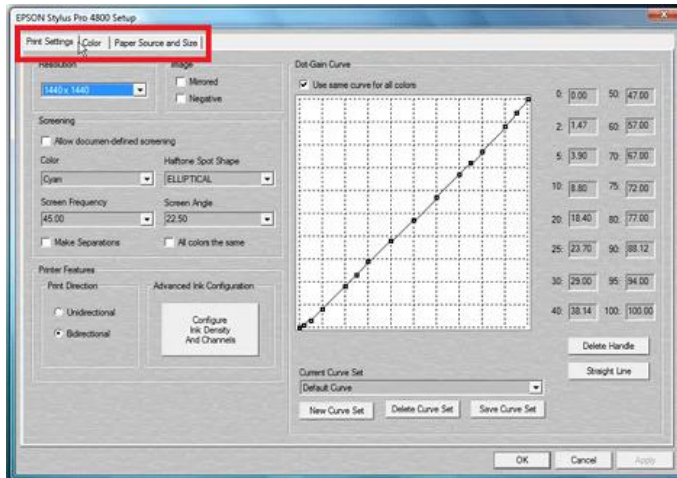
Step #1: Open the MultiRIP Film™ Interface. Click on the Configure menu and select Print Settings.



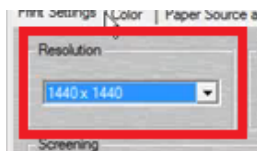
Step #2: In the left column, select the MultiRIP Film™ printer you want to set the RIP Defined settings. Then click on the “Set Print and Ink Settings” button.



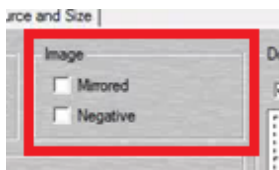
Step #3: The Printer Setup screen will open up. There are three tabs at the top of this screen: Print Settings, Color and Paper Source & Size.



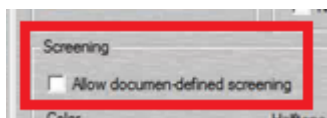
On the Print Settings tab, select the print quality in the Resolution drop-down. The higher the resolution, the more ink will be dropped.



Step #4: In the Image box, you have the option to have the image automatically mirrored or to create a negative. For creating films for textile screen printing, you will not want to check either of these boxes. For other types of offset plate printing or pad printing, you may want to use these settings.



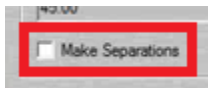
Step #5: Under the Screening box, this is where you can set the default settings (i.e. spot shape, frequency & angle) for each color. If you want to use the settings setup in your graphic software program, you will want to make sure that you check the box left of the “Allow document-defined screening”. If you want to use the RIP Defined Settings, then leave this box unchecked.



To add a specific frequency or angle, just type the numbers in this field. Previous numbers will be stored in the future. You can choose to have all colors with the same settings by checking this box.



MultiRIP Film™ allows for users to create very basic CMYK separations. We recommend that screen printers either create their own spot color separations or purchase a color separation program. If you want MultiRIP Film™ to create basic CMYK separations, check the box next to “Make Separations”.

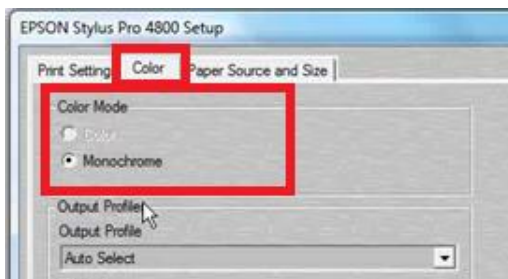


Step #6: In the Print Direction box, you can choose whether to run the printer in bidirectional or unidirectional modes. Just check the box next to the desired setting.

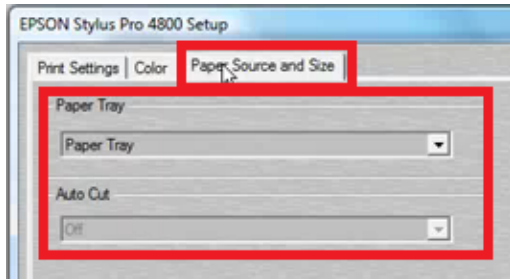


**NOTE:** In the Advanced Ink Configuration box, you can open a window that will allow you to select which ink channels and the printing density. [Click here](#) to learn more about these settings.

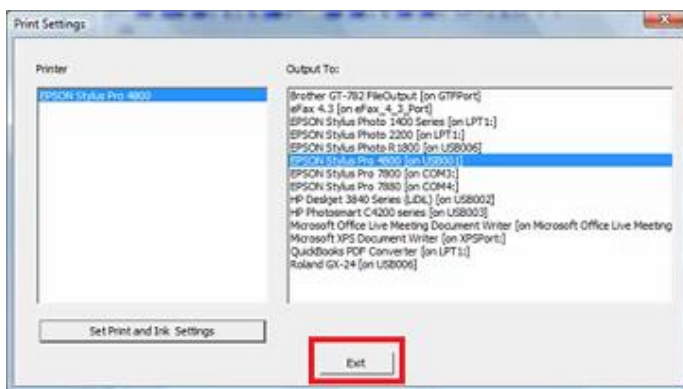
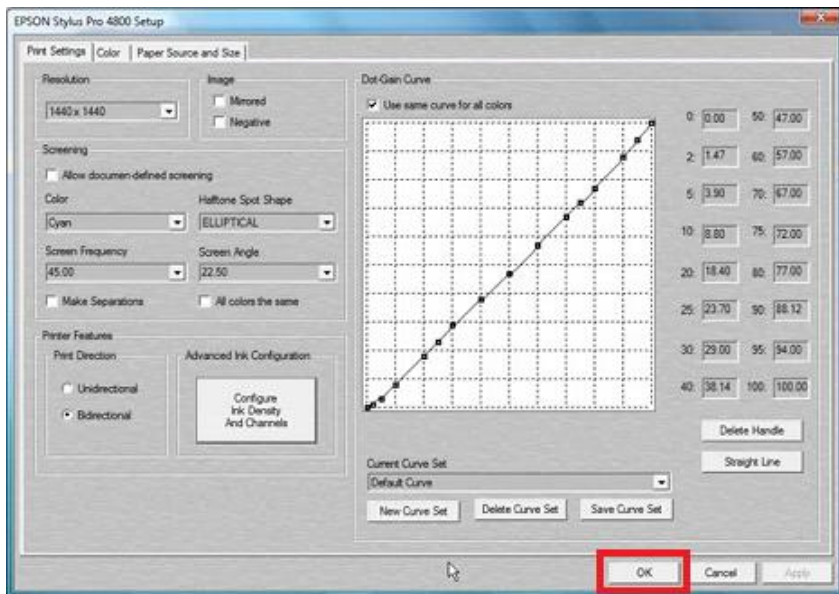
Step #7: In the Color tab, make sure that in the Color Mode box you have Monochrome selected.



STEP #8: In the Paper Source and Size tab, you will want to select the Paper Source field. If you are printing from a roll, you can also choose whether to activate the Auto Cut feature.



Step #9. When you have picked all your default settings, click the OK button in the bottom right corner. Then click the Exit button in the Print Settings screen.



For additional technical support information, please visit the Frequently Asked Questions page ([www.multirip.com/#MRF\\_FAQ](http://www.multirip.com/#MRF_FAQ)) or contact your Distributor.