



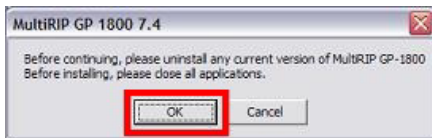
INSTALLING MULTIRIP GP SOFTWARE

Below are instructions for how to install the MultiRIP GP (Garment Printer) RIP software.

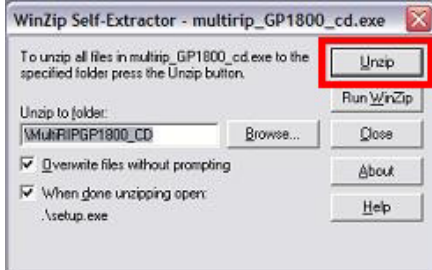
NOTE: You need to install the Epson print driver that comes with your printer before you install the MultiRIP GP Software. Otherwise, you will have to manual set the ports for the PowerRIP Output Queue #1 & #2. Please see Epson's website at www.epson.com for the Epson R1800 print driver.

1. Either put the MultiRIP GP CD into your CD drive or download the software from the website at www.iproofsystems.com/multirip/MultiRIP_GP1800_CD.exe.

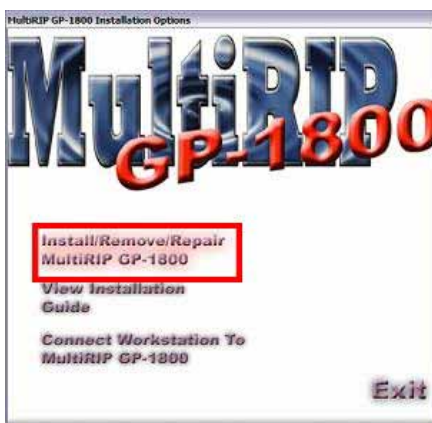
NOTE: When you go to install MultiRIP GP from the web, it will ask you to uninstall any previous versions of the software.



If you download the software, you will need to extract the files from the zip file by clicking on the Unzip button.



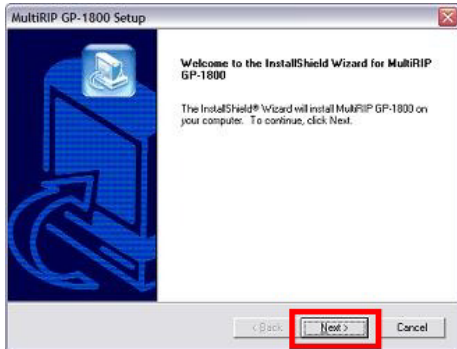
2. The following screen will show up and you will want to click on the link for Install MultiRIP GP.



Please visit www.AnajetUsers.com for more technical support on MultiRIP GP.

Updated 11/01/03

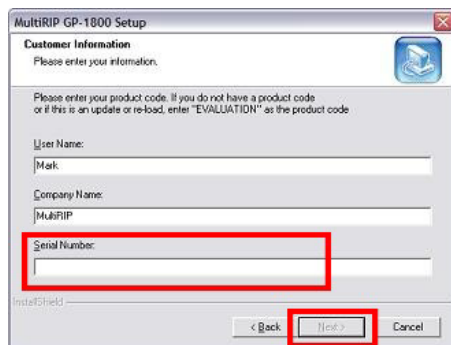
3. The following screen will show up and you will need to click on the Next button to launch the InstallWizard for MultiRIP GP.



4. You must agree to the License Agreement in order to install MultiRIP GP on your computer. We recommend that you read this agreement. To accept the terms of this Agreement, click on the Yes button.



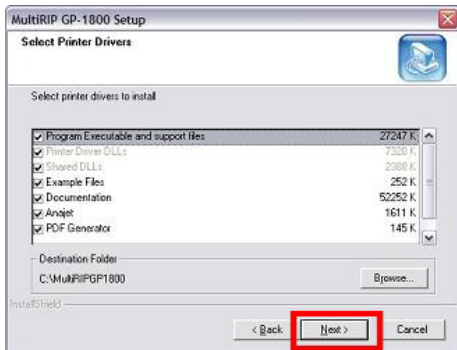
5. The Registration Information screen is next. Type in your name, company name and Serial / Product Code number. The Product Code number can be found on the inside cover of the CD Case and in the Introductory Email that was sent from support@anajetusers.com. If you are unable to locate the Product Code, please email support@anajetusers.com and continue the registration process by entering EVALUATION in this field.



Please visit www.AnajetUsers.com for more technical support on MultiRIP GP.

Updated 11/01/03

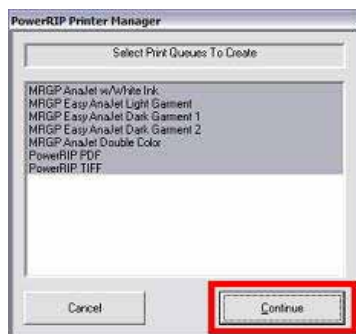
6. The next screen will load the Print Drivers that will be installed on your computer. All of the appropriate Print Drivers will be selected based on your previous responses. Just click the Next button.



7. The next screen is going to ask you which Program Folder you will want MultiRIP GP's software to be installed into. For technical support reasons, we recommend to keep the name the same and just click the Next button.



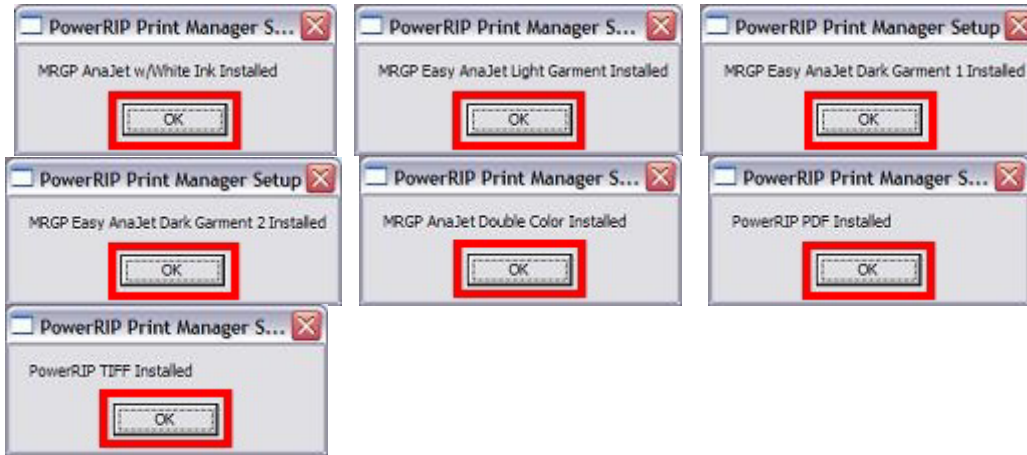
8. The next screen is going to ask you which Print Queues should be installed into the Printer & Faxes Folder on your computer. Based on your previous selections, all the correct queues will be already highlighted. Please click the Continue button.



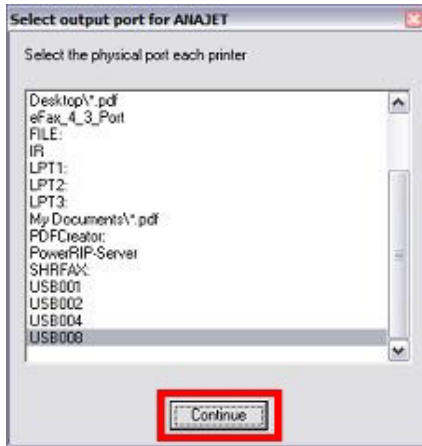
12. The InstallWizard will install the proper software and print queues. You will notice that a series of windows like the ones listed below will pop-up. Please click the OK buttons.

Please visit www.AnajetUsers.com for more technical support on MultiRIP GP.

Updated 11/01/03



13. The next screen will ask you to select the correct Printer Port to run MultiRIP GP through. If you have already installed the Epson x800 Printer Driver on your computer, the correct port will already be highlighted. Just click the Continue button. If the Epson x800 Printer Driver is not already installed, you will need to check the Online Support Forum (www.anajetusers.com) to see how to set the correct ports for the different printer drivers.



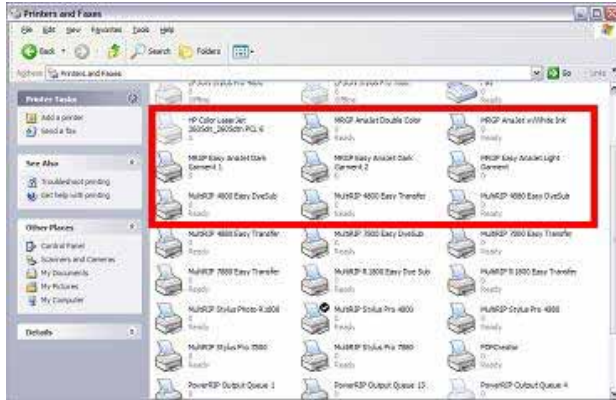
13. The next screen will ask you whether you want to restart your computer now or later. You will need to restart your computer before you can use the MultiRIP GP software



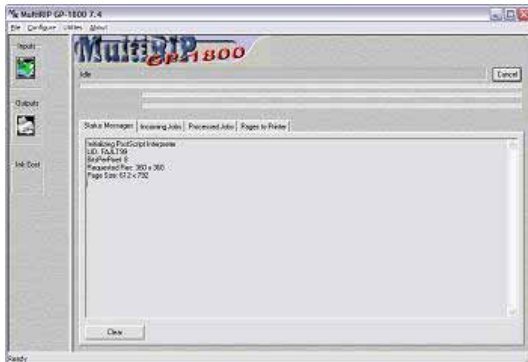
Please visit www.AnajetUsers.com for more technical support on MultiRIP GP.

Updated 11/01/03

14. After your computer restarts, click on Start button and go to your Control Panel. Once the new screen open up, you will want to go into the Printers and Faxes folder. You should see that several new print drivers in this window.



15. The final step is to click on the Start button and go to All Programs link and find the MultiRIP GP program to click on the MultiRIP GP software. The MultiRIP GP Interface will open.



Please visit www.AnajetUsers.com for more technical support on MultiRIP GP.

Updated 11/01/03