

MultiRIP

MULTIRIP INTERFACE (DETAILED EXPLANATION)

The Main Control Dialog

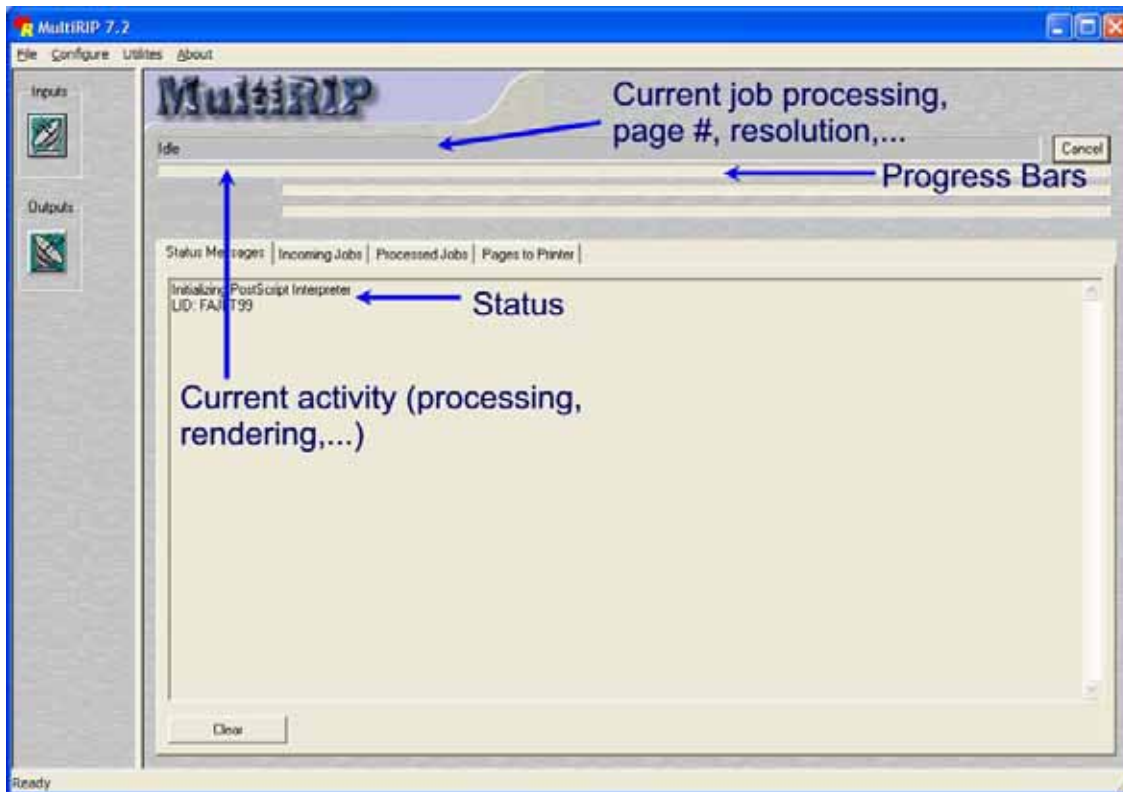
The MultiRIP (aka MultiRIP Server) application is launched automatically when a job is printed to one of the Windows MultiRIP printer entities. It can also be launched by opening Start/Programs/MultiRIP/MultiRIP.

The dialog consists of 3 sections: Information, Control and Configuration.



Information

The top of the screen contains mostly information about the current job and the status of the RIP.



For up-to-date information, please visit the online User Forum at www.multiripusers.com.

MultiRIP

When the Status Messages tab is selected, no queue viewing / manipulation is possible. In this mode, the window is used for viewing messages from the RIP engine. Status information messages appear in the window. These messages are usually for information only. If there is a problem printing a job (missing font, etc.), this window is invaluable for trouble-shooting the problem. To clear the contents of the window, click the “Clear” button on the lower left of the dialog. This will delete all status messages currently in the window.

Configuration

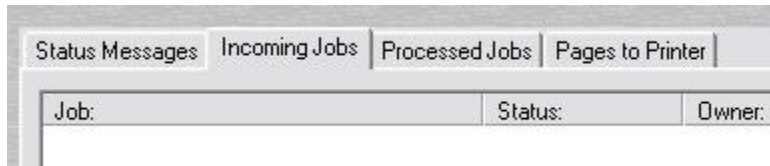
The “Inputs” and “Outputs” buttons launch the MultiRIP configuration dialogs for inputs (Hot Folders, Printer Entities, etc.) and outputs (Output Queues) respectively. These options are also present under the “Configure” menu option. These are described in more detail later in this chapter.

Control

The Tabs over the main dialog’s large window control the function of this window. This is where the queues can be manipulated when one of the queue-tabs is activated.

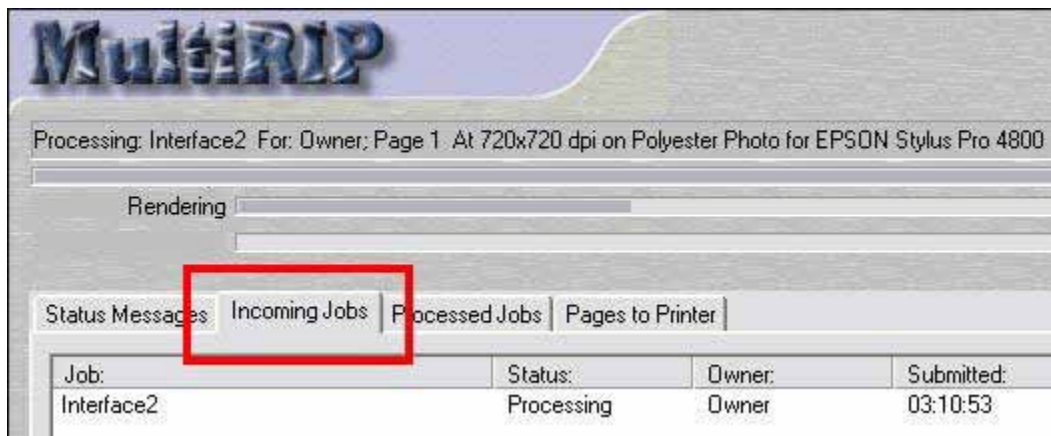
Queue Control

MultiRIP’s job queue is divided into 3 sections. **Incoming Jobs**, **Processed Jobs** and **Pages Being Printed**. To view/manipulate the different queue sections, use the tabs above the main dialogs large window.



The Incoming Jobs Queue.

To view/manipulate the incoming queue, click the **Incoming Jobs** tab. The incoming jobs queue is where jobs arrive initially. Jobs that have been found in the Hot Folders or have been manually inserted into MultiRIP appear here. As the jobs are received they are listed in the queue window. The information displayed in this queue view is Job Name, Status, Owner, Time Submitted and Size (of the PostScript file, in bytes).



For up-to-date information, please visit the online User Forum at www.multiripusers.com.

MultiRIP

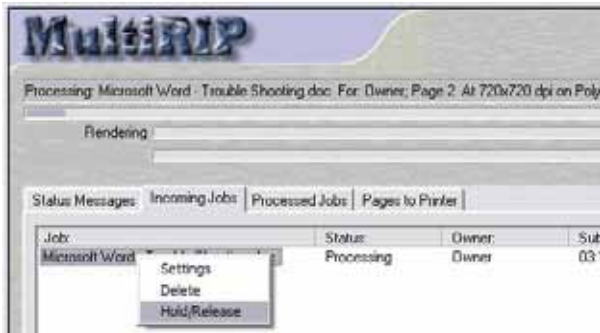
Across the bottom of the window, you'll see three control buttons: **Settings**, **Delete** and **Pause Queue**. These are used to change the job settings of a queued job, delete selected jobs and pause the input queue respectively.

Pausing the Incoming Jobs Queue

Clicking the **Pause Queue** button will pause the incoming jobs queue. Jobs will still arrive in the queue as they are found in the hot folders but they will not be processed. They will remain in the queue with a status of "waiting" until the queue is resumed. When the queue is paused, the third button changes to "Resume Queue". Click this button to resume the queue. Once the queue is resumed, the queued jobs will begin processing in order of priority.

Placing jobs on hold/releasing held jobs

When a job is in the incoming jobs queue with a status of "waiting" it is possible to place individual jobs on hold and release held jobs. To do this select the jobs you wish to hold highlighting them then right-click to bring up the options popup menu. Select **Hold/Release** to toggle the state of the selected jobs.



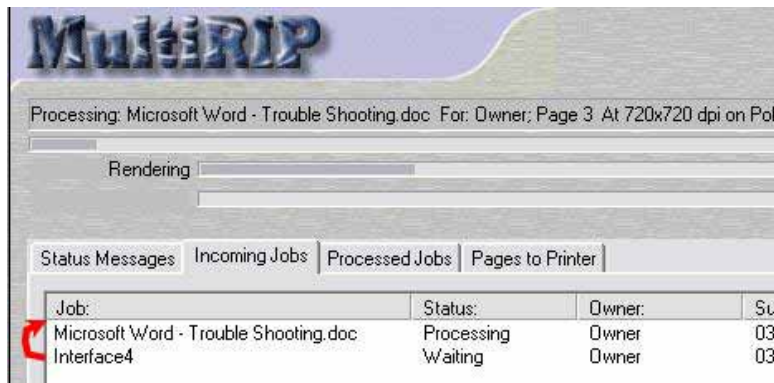
Held jobs will remain in the Incoming Jobs queue indefinitely.

Deleting queued jobs

It is possible to delete queued jobs that are "waiting" or "held" by selecting the job(s) then clicking the **Delete button** or right-clicking and selecting the **Delete Menu Option**.

Changing Job Priority

If there is more than one job in the incoming jobs queue, it is possible to change their print-order by changing their priority. This can be achieved by dragging the jobs to their new location



For up-to-date information, please visit the online User Forum at www.multipusers.com.

MultiRIP

Or you can double-click the job and change the priority using the slider control.



Job with higher priority will move up the queue list while jobs with lower priority will move down.

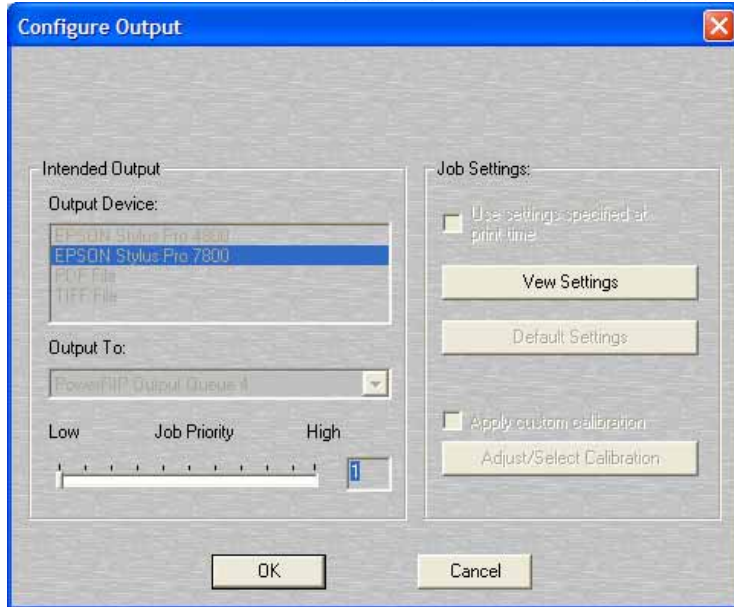
Changing a queued job's print settings

When a job is in the incoming jobs queue with a status of “waiting” or “held” it is possible to change it's destination printer as well as the printing attributes (resolution, paper type, etc.). To do this, double-click on the job you wish to modify or select the job and click the “Settings” button. The **Configure Output** dialog will appear.

Configuring a job's output settings

The **Configure Output** dialog is common to all sections of MultiRIP which require configuration of the target device and settings of print jobs. This dialog is used when configuring hot folders, changing the settings of a queued job or reprocessing a job already processed.

MultiRIP



Intended Output

This is the output device the the job(s) will be printed to. All printers and other output devices selected at install-time will be displayed here. Be sure to select the proper output queue in the “Output To:” drop-down list to insure the data is sent to the right output port.

Output To:

In this drop-down, you can select the proper output queue. Output queues are created at install-time (or manually by the user). The output queue is simply a printer entity which is used for MultiRIP to send data to the printer. The output queue you select should be outputting to the port that the selected printer is connected to. To view/configure the output queues, click the “Outputs” button on the main MultiRIP dialog window.

Job Priority

The priority slide-control allows you to set the priority of the job(s). The range is 1 thru 99 (just like Windows) where 1 is lowest and 99 is highest priority. You can slide the handle on the slide control to change the priority or enter the priority number desired in the text box to the right.

Use Settings Specified at Print Time checkbox

When this control is checked, the job settings will be controlled by the options the user selected when the job was printed from the application. If the box is un-checked, it allows the user to select the printing options and override the settings used at print time. When this control is checked, the “Output Configuration” and “Default Settings” buttons are disabled.

Specify Settings

This button is only active if “Use Settings Specified at Print Time” is NOT checked. Clicking this button will display the device-specific configuration options. These options will vary between output devices. See the “Specifying Job Settings” section later in this chapter

Default Settings

For up-to-date information, please visit the online User Forum at www.multiripusers.com.

MultiRIP

This button is only active if “Use Settings Specified at Print Time” is NOT checked. Clicking this button will load the pre-defined defaults for the selected printer (usually plain paper at low-resolution)

Apply Custom Calibration

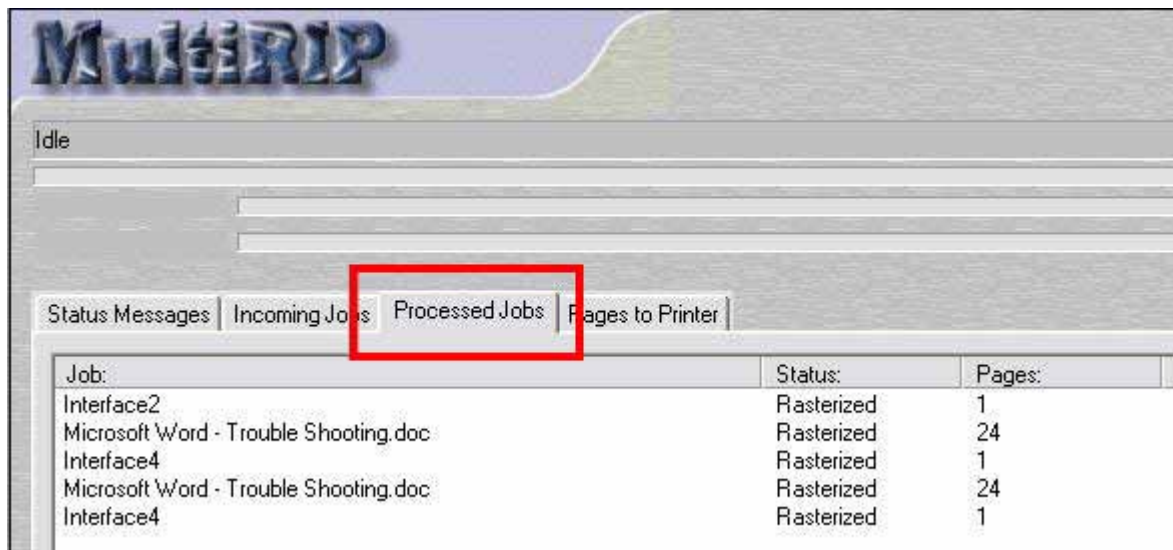
When this button is checked, custom calibration will be used. To define the density calibration curves to use, click the “Adjust Custom Calibration” button. This will launch the “QCurve” application which enables you to define the density curves.

Adjust Custom Calibration

Clicking this button will launch the “Q-Curve” application which enables you to define the density curves. Each color channel can be adjusted individually.

Processed Jobs Queue

To view/manipulate the processed jobs queue, click the **Processed Jobs** tab.



This view will allow the user to view and manipulate jobs which have been processed and have not yet expired (expiration time is set in the “Configure MultiRIP Settings” option under the “Configuration” menu item).

Deleting Processed Jobs

To delete a job or range of jobs, simply select the desired jobs by clicking on their job names and click the Delete button or right-click on the job-name and select Delete from the popup menu options.

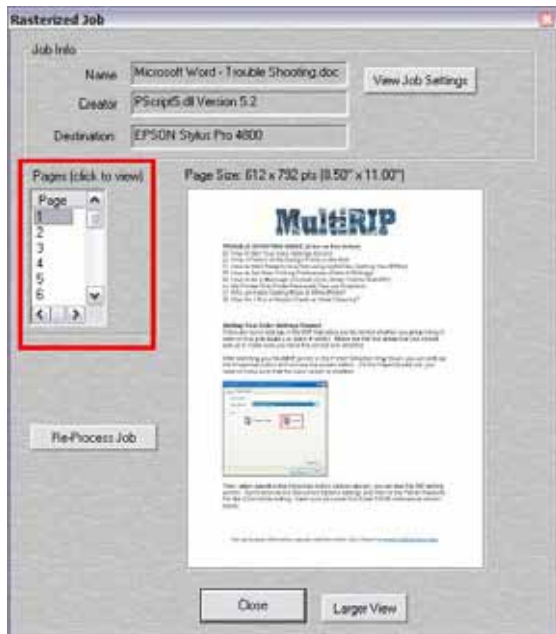
Reprinting a processed job

To reprint a job that’s already been processed, or to reprint selected pages from a processed job, you can double-click on the job name or select the job name and click the **Reprint** button. This will cause the **Rasterized Job dialog** to appear. This dialog enables you to view individual pages, re-print individual pages, re-process the entire job with different settings or even

For up-to-date information, please visit the online User Forum at www.multipusers.com.

MultiRIP

reprocess the job for another output device. You could, for instance, print a job to MultiRIP's PDF generator for proofing then re-process the job for the destination printer without having to re-print the job from the application that created it.



Job Info:

This section displays the job name, creator and destination device.

View Job Settings:

Clicking this button will let you view (but not change) the settings that were used to process the job.

Preview Window:

This window displays the selected page or color plate

Pages Section:

This section displays the pages in the job clicking on the individual page number will cause a sub-sampled preview of the page to be displayed in the preview window.

Re-Process Entire Job:

Clicking this button will enable you to re-process the entire job with different settings or to a different output device if desired. If there are pages currently printing, they will be deleted.

Color Section:

If the job was printed as a separation and contains multiple plates and "Make Composite From Separation" was enabled, all the colors will be displayed in this box along with the Composite representation. If the job has printed as a composite, only "Composite" will appear in this window. If the job was printed as a separation, only "Composite" will appear in this window, to view the individual plates, select the proper "page" in the pages list.

For up-to-date information, please visit the online User Forum at www.multiripusers.com.

MultiRIP

Reprint Section:

This section allows the re-printing of individual pages without re-processing. Any page range from a document can be reprinted.

Range:

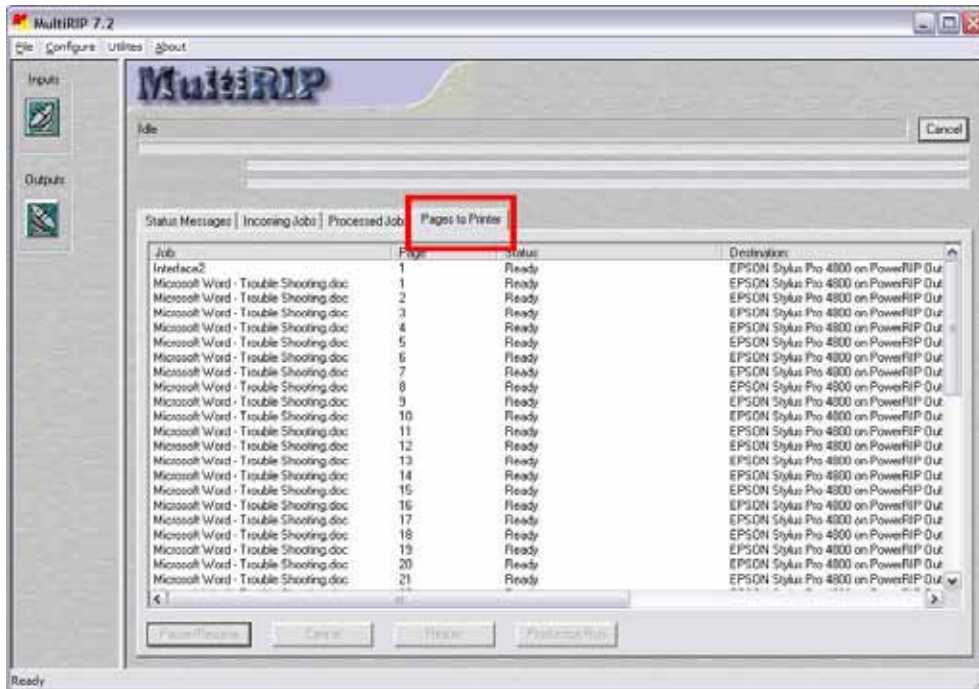
Ranges can be specified as well as **multiple ranges** separated by a semicolon. For example "1-5;7-11" will reprint pages 1 thru 5 and 7 thru 11. Conversely, "5-1;12-10" will reprint pages 1 thru 5 in reverse order and 10 thru 12 in reverse order. You can also specify all even or odd pages in the selected range.

Copies:

The range(s) will be repeated according to the number entered in the "Copies" text box and according to the selection of "stacked" or "collated". Collated will print all pages in a range then start over (1,2,3,4, 1,2,3,4, etc) while Stack will print multiple copies of each page in the range before printing the next page (1,1,1,2,2,2,3,3,3, etc.).

Pages Being Printed Queue

To view/manipulate the page queue, click the "Pages Being Printed" tab.



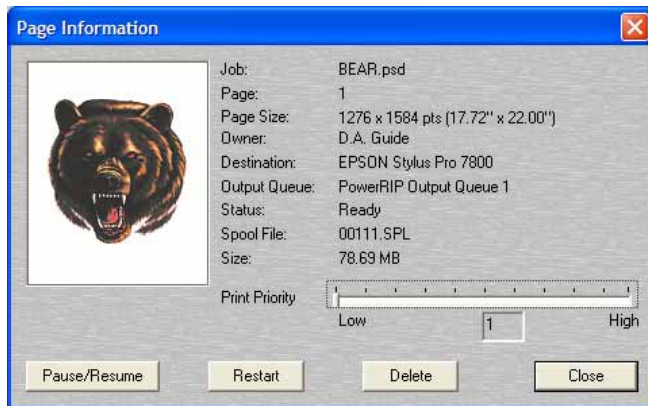
In this view you may see multiple entries per job, as each job may contain more than one page. This queue allows you to control the job output on a per-page basis. The job information displayed in this queue is Job Name, Page #, Status (ready, printing, printed, error, spooling), Destination (printer/output queue), Owner, Size (of raw printer data in bytes) and time submitted. You may have to use the bottom scroll bar to see the last few columns. The buttons at the bottom of the window are now "Pause/Resume", "Cancel" and "Restart"

For up-to-date information, please visit the online User Forum at www.multiripusers.com.

MultiRIP

Viewing Page Info & Changing Page Priority

To view information about a page, double click on the desired item (in the Job column). The **Page Information dialog** will display.



This window shows a thumbnail preview of the page as well as other useful information. To change the priority of the page, use the slide control or enter the priority in the text box provided (1 is low, 99 is high priority). Pages of higher priority will print first; skipping lower priority pages regardless of their visual order in the queue window.

Canceling a Page

To cancel a page that's currently printing or to delete a page before it prints, select the page(s) and click the **Delete** button. Alternately, you can select the pages, **right-click** and select **Delete** from the popup menu. You can also delete the page by opening the Page Information dialog (double-click on the page) and click the Delete button.

Re-Starting a Page

To restart a page or range of pages, select the pages by highlighting them and click the **Restart** button. This will cause pages to begin printing from the beginning. This is handy for paper-jams, out of ink and other such events that may keep a page from printing successfully. As with the delete option, you may also use the "right-click" method or the Page Information dialog method to do this.

Pausing / Resuming Page Printing

To pause or restart a page or range of pages, select the pages by highlighting them and click the **Pause/Resume** button. This will the pause status of the selected pages to toggle. If they were paused they will resume and vice-versa. As with the delete option, you may also use the "right-click" method or the Page Information dialog method to do this.

Manually Inserting a PostScript or PDF File into MultiRIP Job Queue

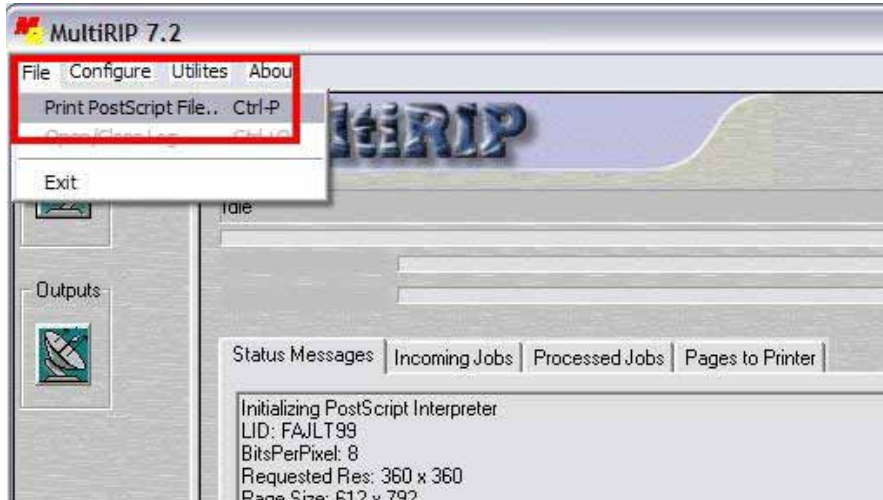
One of the nice features of MultiRIP is the ability to rasterize PostScript and PDF files that were not printed specifically for our supported devices. Although PostScript is inherently a "device-independent" language, in the real world, this is not always the case. If you have a PostScript file that was intended for an imagesetter then more than likely it was crated using the options in the PPD appropriate for that device. If you were to send this file verbatim to most other

For up-to-date information, please visit the online User Forum at www.multiripusers.com.

MultiRIP

PostScript interpreters, you may not get the desired results. MultiRIP allows you to insert a PostScript or PDF file directly into the job queue, specify the print settings and process the job.

To insert a PostScript or PDF file into the MultiRIP queue, simply drag the file over the queue window. The Output Configuration dialog (described in next section) will appear. You can then select your output device, print settings, etc. and the job will print. Alternately, you can use the **“Print PostScript File”** option from the **File** menu.



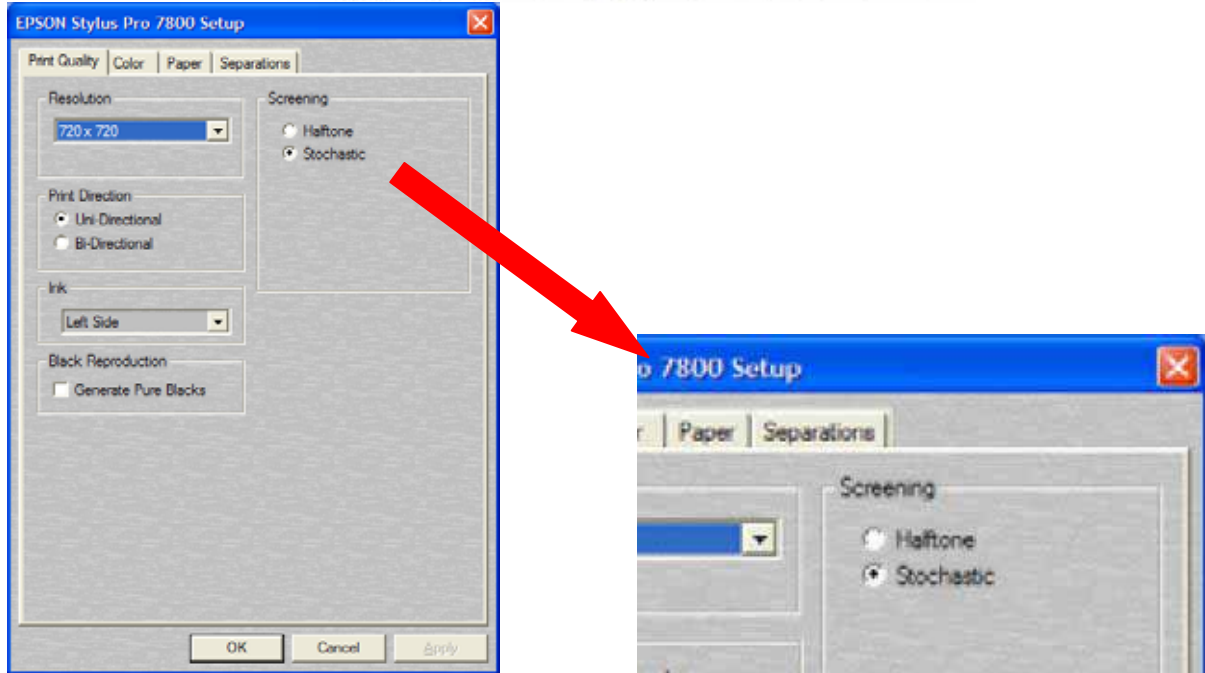
If the job was not printed using one of MultiRIP's PPDs (as would be the case with a file created for an imagesetter) it is HIGHLY recommended that you do NOT select "Use Settings Specified at Print time" and set the print options manually.

Output Configuration Dialog

There are several sections in MultiRIP that enable you to specify job settings by clicking the "Specify Settings" button. This action invokes a printer-specific dialog which allows you to set resolution, media, color mode etc. Although some sections are device-dependent, a lot are common to all devices as they are features that belong to MultiRIP, not the printer. In this section we will go through a typical configuration and explain the different functions. Most of these are the same as the settings available at print-time because they are in the PPDs. We will use the Epson Stylus Photo 78000 for this example.

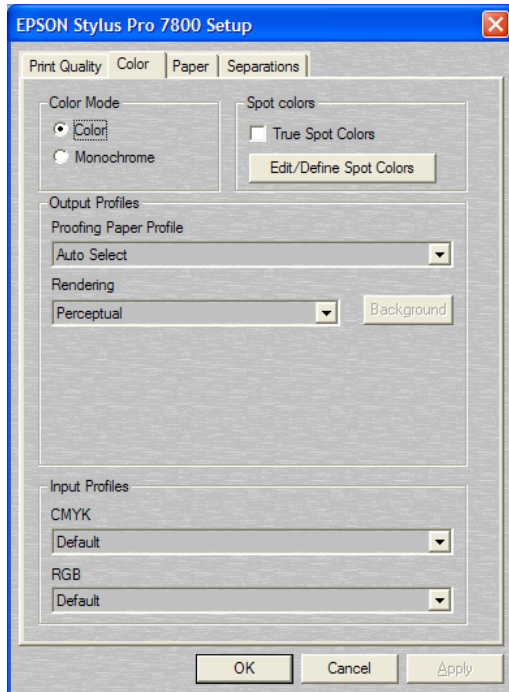
Whether you are configuring a hot-folder, re-processing a job or manually inserting a Job in the queue, this procedure will be the same.

MultiRIP



Print Quality

The options in this section usually pertain to resolution and other print-quality related settings. In the case of the Epson 7800, the choice of **halftone screening** or **stochastic** can be made here. The resolutions that appear in the resolution dropdown will vary from paper type to paper type.



For up-to-date information, please visit the online User Forum at www.multipusers.com.

MultiRIP

Color

This section of the dialog does not change much between different models of printers as it contains mostly MultiRIP specific color features.

Color Mode:

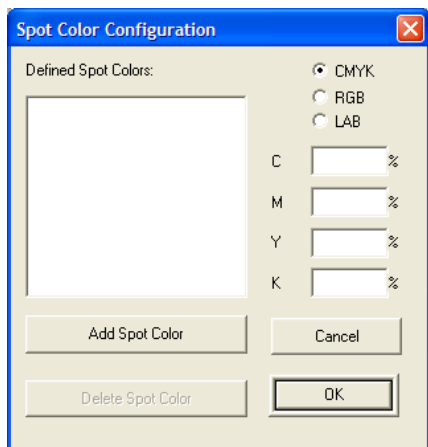
This section lets you specify color or monochrome output.

Spot Colors:

This section lets you specify the use of the “True Spot” feature. This feature recognizes named spot color in a job and applies a proprietary function to make the spot color appear as close as possible to its true color.

Edit/Define Spot Colors:

This button displays the spot color configuration dialog which will let the user define spot color definitions. This is sometimes necessary as PostScript separation files don't always contain the definition of a spot color. This can also be used to override a spot color with a certain name.



The Spot Color Configuration dialog allows the addition / deletion and modification of user-defined spot colors in CMYK, RGB or Lab color spaces. Simply select the color space you wish to work in by clicking one of the radio buttons on the upper right. This will display all user-defined spot colors (if any) that were defined in that particular mode. As you select the spot color name in the name window, the values will appear in the appropriate boxes on the right. These can then be edited. To delete a spot color, select it and click the delete button. To add a spot color, click the “Add Spot Color” button and follow the instructions.

Output Profile (ICC/ICM)

This lets you select the profile to use when printing. MultiRIP ships with all necessary ICMs for all supported printers and resolution/paper type combinations. These are used automatically by setting this option to “**Auto Select**”. This drop-down contains all the CMYK (in this case) ICMs that were found in the system. If you have created a custom profile you would like to use, you can select it here. To be able to select it at print-time from your applications, it must be added to the PPD. To do this, use the “Add ICM to PPD” utility which is located in the MultiRIP program group. This utility is documented elsewhere in this manual. The best thing to remember when using this feature is: When in doubt, use Auto Select.

For up-to-date information, please visit the online User Forum at www.multiripusers.com.

MultiRIP

Rendering Intent

This drop-down lets you select which rendering intent to use when printing. The default is Perceptual. Following is a brief description of each rendering intent:

Perceptual: Maintains contrast. Creates natural-looking images (this is the default)

Absolute Saturation: Maintains saturation. Good for business charts and other situations where un-dithered colors are required.

Relative Colorimetric: Maintains colorimetric match. Used for graphic designs and named colors.

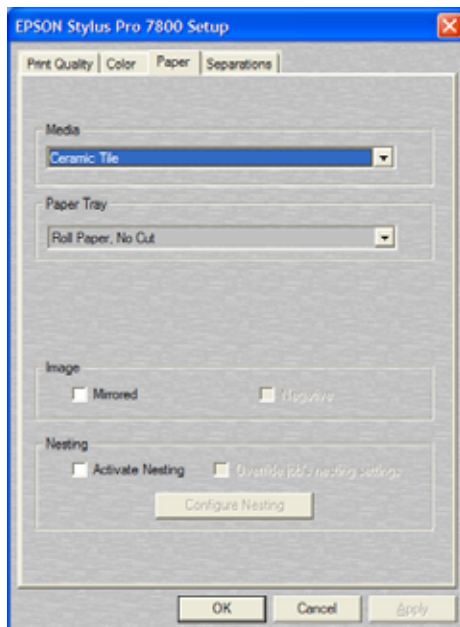
Absolute Colorimetric: Maintains the white-point, matches the colors to their nearest color in the destination gamut.

Input Profiles

This lets you select the input profiles for CMYK and RGB. These drop-downs will list and let you choose any CMYK or RGB profile (ICM/ICC) found in the system. To add profiles to the MultiRIP PPDs, use the “Add ICM to PPD” utility in the MultiRIP program group.

Paper

This section of the dialog allows you to change the media type and set any output-tray options. It also lets you to mirror or reverse the output. This section also contains the controls for the use of the nesting feature.



Destination Media Size

This drop-down lets you define the size of the actual media that will be printed on. In our example, we have a letter-size job that will be nested onto 11x17 sheets so the destination media size is Tabloid (11x17). This drop-down list also contains the ability to create a custom destination media size. To do this, select “Custom” as the destination media size. The two boxes that contain the x and y dimensions will be set to 0.0. Set the x and y dimensions of the

For up-to-date information, please visit the online User Forum at www.multiripusers.com.

MultiRIP

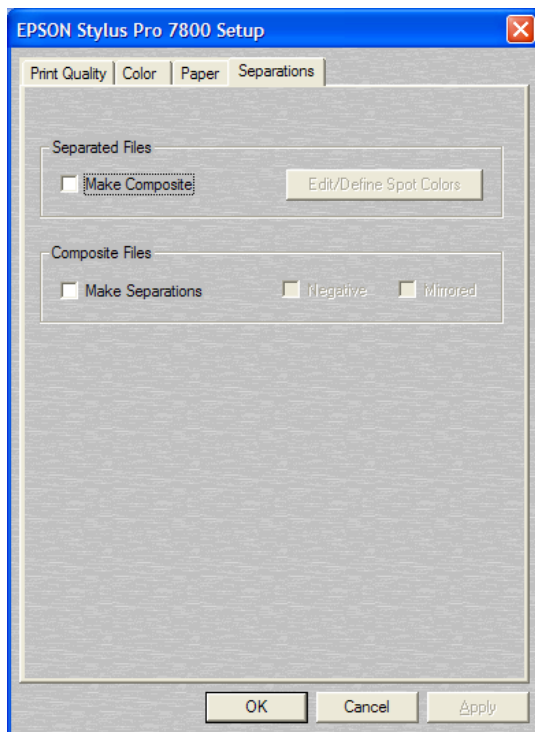
sheet in “PostScript Points”. There are 72 PostScript points to an inch so 8.5 inches would be 612 and 11 would be 792, etc.

Output Reduction

If the pages of the job are too big to nest onto the desired destination media, the individual pages can be reduced so that they will fit. This dropdown lets you select the percentage of full size.

Separations

This section lets you set the separation-specific settings.



Make Composite

Selecting this checkbox turns on the “Make Composite From Separation” feature. Use this ONLY on separated PostScript files. If the file is not separated, the results will be unpredictable.

This feature will take the plates from a separated job with up to 256 plates and merge them together into a composite. This is a powerful feature widely used for proofing separations to view trapping, etc.

Make Separation

Selecting this checkbox turns on the “Make Separation From Composite” feature. Use this ONLY on jobs that were printed as composite color. If the jobs are separated or monochrome, the results will be unpredictable.

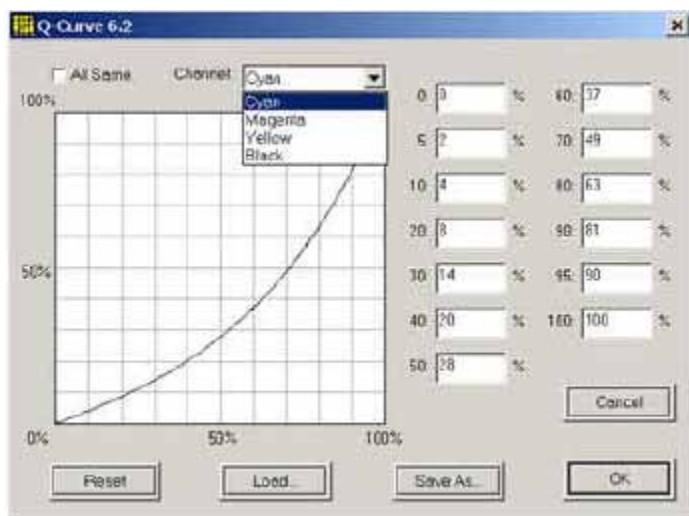
For up-to-date information, please visit the online User Forum at www.multipusers.com.

MultiRIP

This feature will take a composite job and separate it out into C, M, Y and K plates. This feature is handy when a separation is required but the original file is not available or was created with an application that does not support printing separations

DENSITY CALIBRATION

MultiRIP includes a calibration tool known as Q-Curve which is used to create the calibration files used to change the output density on a per-color basis. This application is launched automatically whenever the “Adjust Custom Calibration” button is clicked (see the Configure Output Section) or, when the “Apply Custom Calibration” checkbox is checked and there is no calibration curves defined for that job or queue setup. When you click on the Adjust Custom Calibration button, the Q-Curve main dialog will appear.



The last values for this job or queue (depending on what dialog it was selected from) will be loaded automatically. It is not necessary to “name” the different calibrations. It is possible, however, to save settings to and load from named files by using the “Load” and “Save As” buttons.

The “All the Same” Checkbox

Checking this box will tie all the channels together. All other color channels will become like the currently displayed channel when the box is checked. Also, any subsequent changes to a channel will affect all channels in the same manner.

If this checkbox is not checked, all channels can be edited independently and will retain their individual values.

The Channel Dropdown Item

This dropdown list allows you to switch color channels. If “All the same” is checked, all channels will be the same.

The Reset Button

Clicking this button will reset the curve to the values that were set when the “Adjust Custom Calibration” button was clicked.

For up-to-date information, please visit the online User Forum at www.multiripusers.com.

MultiRIP

The Load Button

This will invoke the normal Windows navigation dialog and allow you to load a previously defined curve from a named file.

The “Save As” Button

This will invoke the normal Windows navigation dialog and allow you to save the current settings to a named file. This will allow you to have an archive of different curves to load as needed.

Calibrating

NOTE: It is highly recommended that a densitometer be used when doing any calibration. Although you can calibrate without one, you would be relying on the human eye, light source, etc which can have many variables.

The Q-Curve calibration user interface enables you to alter the density curves by dragging the graphical line (on the left) or typing the number into the proper box (on the right).

To edit using the graphical line, select a place on the curve where you want to make the change and click. A **handle** will **appear** which you can then drag up and down. Create as many handles as necessary to achieve the proper curve. To **delete a handle**, simply drag it **outside** the bounds of the grid and it will disappear.

The calibration grid is designed “linearly” and thus 0% (the highlights) is at the bottom left and 100% (the shadows) is on the upper right.

To change the appearance of your printout, drag the curve in the direction you want the density to move. For example if your 50% range is printing too dark, **decrease** the value at that range by moving the curve down or entering a lower number in the 50% box.

MANAGING INPUTS

MultiRIP is designed to accept input from multiple sources. Hot folders being the primary way in which jobs are received. **The printing mechanism**, including hot folder, printer entities, etc. **is automatically set up at install time**. The user does not have to configure any of this to print normally. It is possible, however, to customize the inputs for particular needs.

When MultiRIP server is installed a hot folder and a Windows printer is created for each output device that is installed. For example, if you install MultiRIP server and select the Epson 1290, Epson 7800, TIFF Generator and PDF Generator, four different Windows printers will be created, one for each output device. These are referred to as “Printer Entities” by MultiRIP. These four Windows printers (printer entities) will in turn deposit PostScript files in four different hot folders when they are printed to. These four hot folders are scanned periodically by the MultiRIP server software.

In this section we will discuss how to manage hot folders and printer entities. At the end of this chapter, we will combine all the information by adding an input (hot folder and printer entity) for the Epson 7800 which is hard-wired to print on Photo Paper at 720 dpi (ignoring print-time settings).

For up-to-date information, please visit the online User Forum at www.multiripusers.com.

MultiRIP

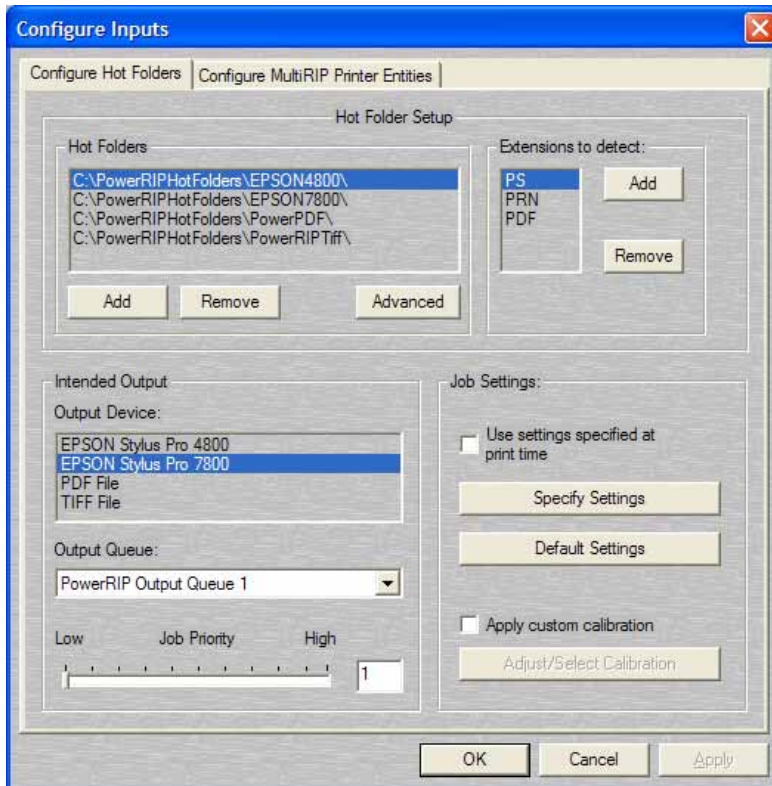
Input management is controlled by the **Configure Inputs dialog**. This dialog contains two sections, one for configuring Hot Folders and one for configuring Printer Entities. To access the Configure Inputs dialog, click the “Inputs” button on the MultiRIP application main dialog.



Configuring the Hot Folders

A hot folder is simply a folder into which users can drop PostScript or PDF files to be printed.

The Configure Hot Folders section of the Configure Inputs dialog allows you to add/delete/configure hot folders. The information in the screen-shot below shows the hot folders as they were created by the installer when we installed with support for the Epson 4800, Epson 7800, TIFF Generator and PDF Generator. Let's take a look at the different sections of this dialog. The bottom portion of this dialog is exactly the same as the “Configure Output” dialog documented earlier.



For up-to-date information, please visit the online User Forum at www.multiripusers.com.

MultiRIP

Hot Folders List:

This window displays all currently active hot folders. They are identified by the full path to their location. You will notice that the hot folders are all located in the “MultiRIPHotFolders” folder. This is for organizational purposes only, any folder can be used as a hot folder. Keep in mind that files in the hot folders are **volatile**. They will be **deleted** once the job expires

Extensions to detect:

This window displays all file extensions that will be treated as jobs. The default extensions are PDF, PS and PRN. Any file in the hot folder which has one of these extensions will be treated as a job and thus renamed, opened, processed and deleted.

Add / Remove Buttons (Extensions):

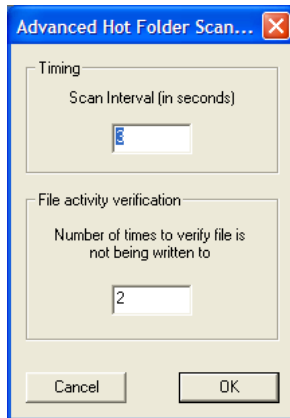
These buttons pertain to the extensions for the selected hot folder.

Add / Remove Buttons (Hot Folders):

Add and delete hot folders.

Configure Output Section:

All settings in this section are documented in the section titled “Configuring a Job’s Output Settings”.



Advanced:

This button will invoke the “Advanced Hot Folder Scanner Settings” dialog:

Advanced Hot Folder Scanner Settings:

The top box contains the number (in seconds) of the scan intervals. The bottom box contains the number of times to find the file unchanged and closed before it is considered “complete” and is placed in the job queue.

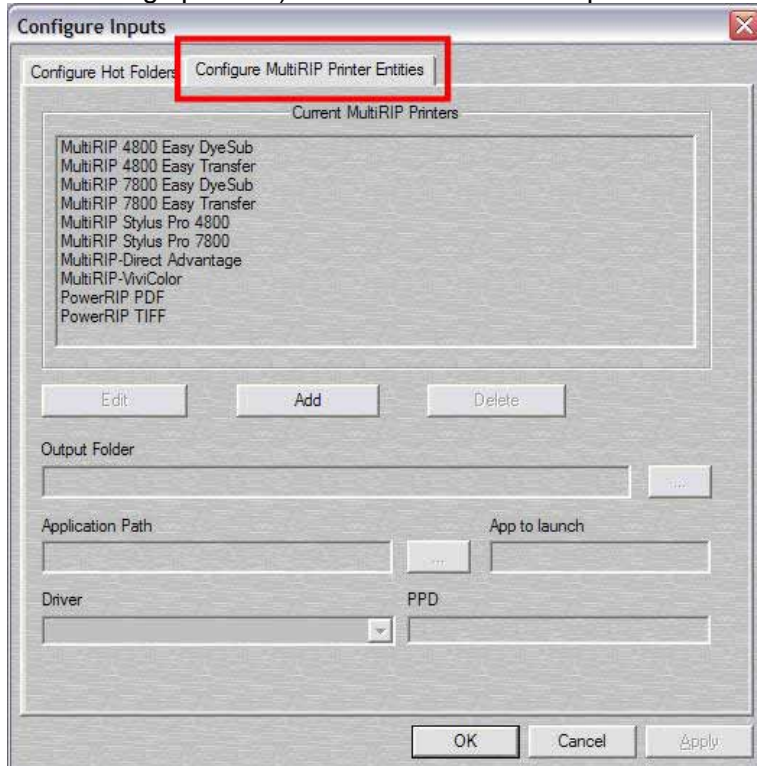
Configuring Printer Entities

It is not necessary to change these settings to print normally. Furthermore, it is recommended that the settings for the default printer entities not be modified unless you are sure of what you are doing. Wrong settings in this section will cause problems when printing.

For up-to-date information, please visit the online User Forum at www.multiripusers.com.

MultiRIP

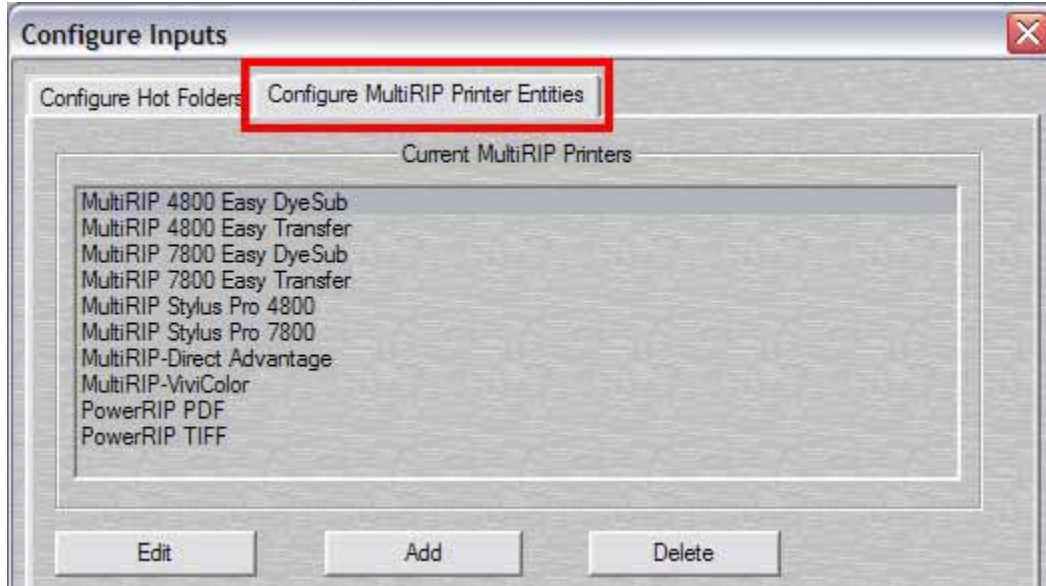
As mentioned before, upon installation, a Windows printer (appears in the list of printers under start/settings/printers) is created for each output device selected at install-time.



These Windows printers are referred to as "Printer Entities". When you print to one of these printers, the resulting PostScript file is placed in a Hot Folder (described in the previous section) which is in turn scanned by the MultiRIP application.

To access the Printer Entities configuration dialog, select the "**Configure Printer Entities**" tab of the Configure Inputs dialog. If this dialog is not already open, click the "Inputs" button on the main MultiRIP dialog.

MultiRIP



Current MultiRIP Printers:

These are the currently defined MultiRIP printer entities. These can be seen in Start/settings/printers as well.

Edit:

When this button is clicked, the setting options below will switch from read-only mode to readwrite mode, enabling you to change the settings. When in edit mode, this button will change to “Cancel Edit”. To save any changes made during the edit session, click “OK” or “Apply”.

Add:

Enables the creation of a new Printer Entity. See “adding an input tutorial” in the next section.

Delete:

Deletes the selected printer entity. When deleting a printer entity, don’t forget to delete the hot folder entry associated with it (if one was created).

Output Folder:

This is where the selected printer entity will deposit its PostScript jobs when you print a job. There must be a hot folder entry telling MultiRIP to scan this folder. Since this printer entity was

App To Launch:

This is the executable that will be automatically launched when a job is printed to one of the MultiRIP printer entities. It will launch this app from the “Application Path”. See explanation of the Application Path parameter for more information.

Application Path:

Part of the printing mechanism is to automatically launch MultiRIP when a job is printed to one of the MultiRIP printer entities. This parameter tells the system the location of the application’s executable file. The reason this is selectable is because it is theoretically possible to have more

MultiRIP

than one version of MultiRIP loaded and this would enable different printer entities to launch different versions.

This is a very advanced setup though and should not be attempted by the faint of heart. Normally, this should be left at the default, which is the path to the MultiRIP executable (MultiRIP.exe)

Driver / PPD:

The driver selected here is the driver that will be used by the printer entity. You MUST use one of the “MultiRIP” drivers and it must match the destination printer. The PPD box will always be read-only and automatically updated as the driver selection changes.

Adding a Printer Entity and Hot Folder tutorial

The previous 2 sections describe the operation of the Hot Folder Configuration and the Printer Entity Configuration dialogs. This section will walk you through the creation of a printer entity/hot folder to help you understand how they work together.

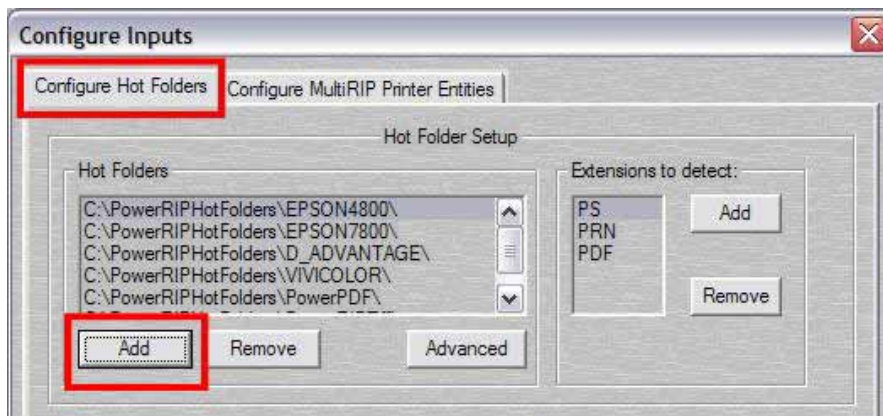
In our example, MultiRIP was installed with support for the Epson Stylus Photo 4800, the Epson Stylus Pro 7800, the TIFF Generator and the PDF Generator.

Lets say we want to add a printer entity that, when printed to, outputs to the Epson Stylus Photo 4800, ignoring the job settings at print-time and processing every job for “Professional Media Photo Paper” at 1440x720 dpi using 85-line halftone screening. We’ll call this printer entity “Epson4800Halftones”. The object in this scenario is to have a printer entity that will always print the same way regardless of the print settings the user specified when he/she printed the job. This will also leave us with a hot folder where you can deposit virtually any PostScript or PDF file and have it print on the 4800 using the settings we “hard-wired”.

Create the hot folder

The first step is to create the hot folder. We like to keep all the hot folders in the “MultiRIPHotFolders” folder. This is just to keep things organized... a hot folder can be anywhere on the server system (the machine running MultiRIP Server) or even on the network.

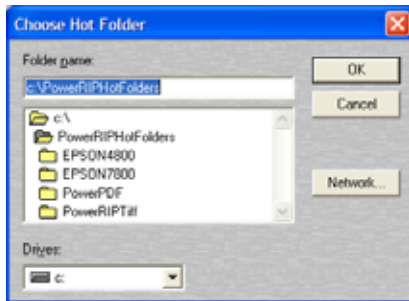
Open the “configure inputs” dialog by clicking the “Inputs” button on the main dialog.



For up-to-date information, please visit the online User Forum at www.multiripusers.com.

MultiRIP

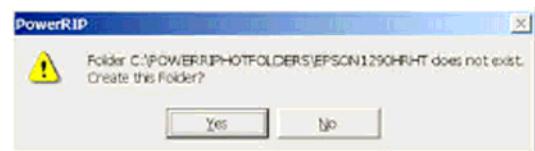
Click Add, the “Choose Hot Folder” dialog will appear:



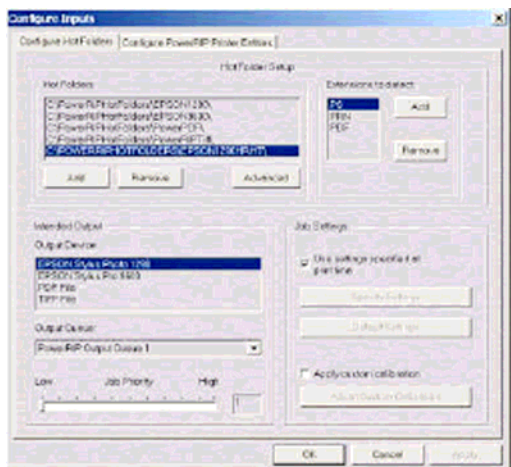
You will notice that the dialog comes up by default to the “MultiRIPHotFolders” folder. Lets give the folder the name “EPSON4800HRHT”. Type that in the Folder Name box:



Click OK



A dialog will appear asking you if you wish to create this folder (assuming the folder doesn't already exist). Click Yes. The folder is created and added to the hot folders list.



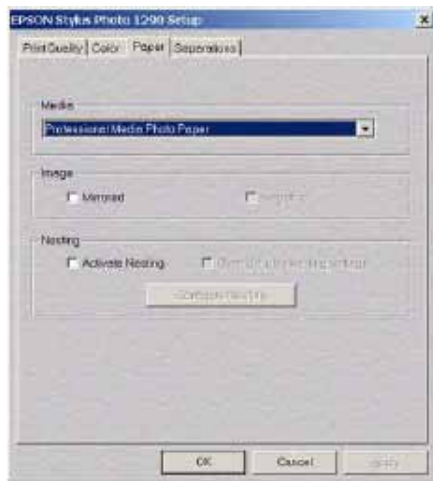
For up-to-date information, please visit the online User Forum at www.multipusers.com.

MultiRIP

With the new folder selected, let's set the output options. First, set the target output device, in this case, the Epson 4800. In the "Intended Output" section select the EPSON Stylus Pro 4800 as the printer and the appropriate output queue. In this case, MultiRIP Output Queue 1 (which is pointed at the port the 1290 is connected to). If you want to assign a higher priority to the jobs that arrive in this hot folder, you may change that now by using the "Job Priority" settings.

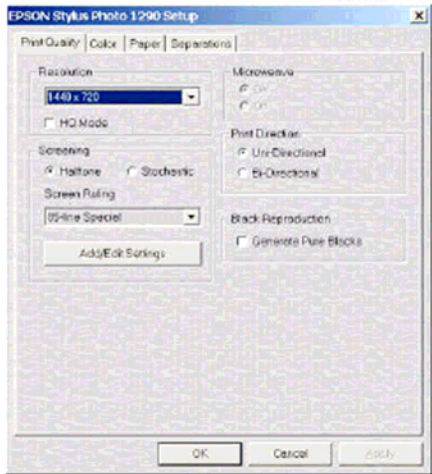
Since we want all jobs that are processed from this hot folder to have the same settings ("Professional Media Photo Paper" at 1440x720 dpi using 85-line halftone), we're going to **un-check** the "Use settings specified at print-time" and define our own settings. When you un-check this box, the "Specify Settings" button becomes enabled. **Click the Specify Settings** button.

The EPSON Stylus Photo 4800 Setup dialog will appear. Set the paper type first, this will enable the proper range of resolutions. Click on the "Media" drop-down list and select "Polyester (Photo)" Your dialog should now look like this:

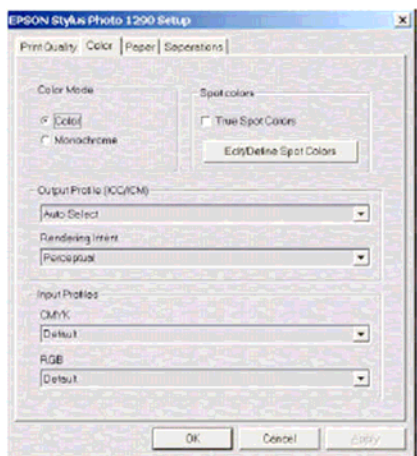


Now that we've chosen our paper type, let's choose the resolution and screening mode. Click on the "Print Quality" tab, select 1440x720 resolution, halftone screening, 85-line by using the "Resolution" dropdown list, the "Halftone" radio button and the "Screen Ruling" dropdown list. The Screen Ruling dropdown will not appear until you select halftone screening. Your dialog should now look like this:

MultiRIP

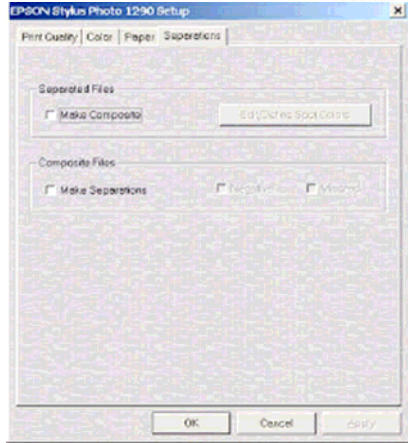


Now we'll verify that there are no un-wanted settings elsewhere in the configuration. Click on the "Color" tab and make sure that "Color Mode" is set to color. For the purposes of this example, we're going to leave all the other color management settings at their default setting. Your Color dialog should look like this:



Make sure the "Make Composite" and "Make Separations" settings are not turned on. Click the "Separations" tab. Your Separations dialog should look like this:

MultiRIP

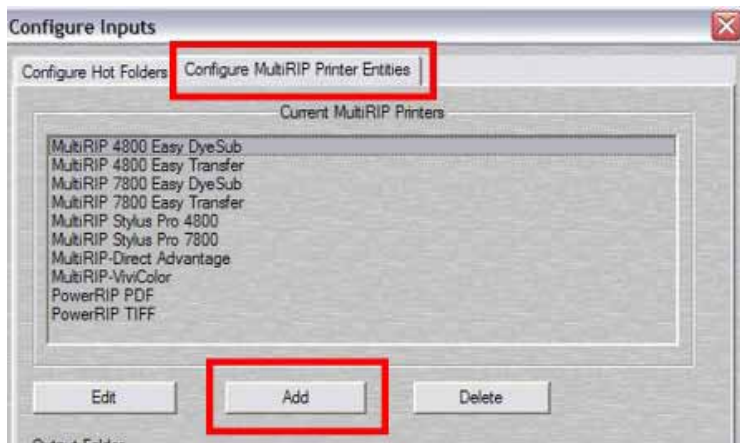


Click OK. This will bring you back to the hot folder setup dialog. Your Hot folder is now created. Any job that lands in the EPSON1290HRHT folder will be ripped for the Epson Stylus Photo 4800 with the settings we specified - ignoring the settings specified at print-time and will be sent to MultiRIP Output Queue 1 which will send the ripped pages to the Epson 4800 printer. Click OK In the “Configure Inputs” dialog to save your changes.

Create the Printer Entity

Now that we have the hot folder configured, lets create a print manager entity which, when printed to, will deposit PostScript files into this newly created folder.

If not already opened, open the “Configure Inputs” dialog by clicking the “Inputs” button on the main dialog. Click the “Configure MultiRIP Printer Entities” tab. The dialog will appear.

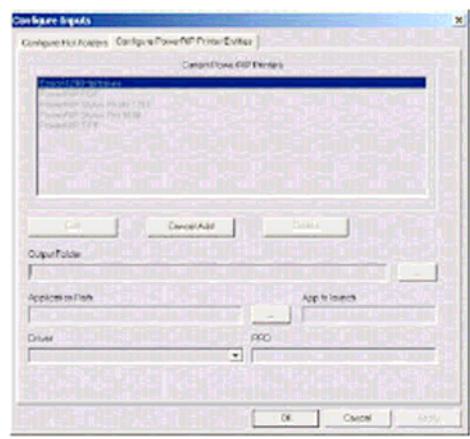


Click Add. A dialog will appear asking you for the name of the new printer entity. Type “Epson4800Halftones” without the quotes and click OK.

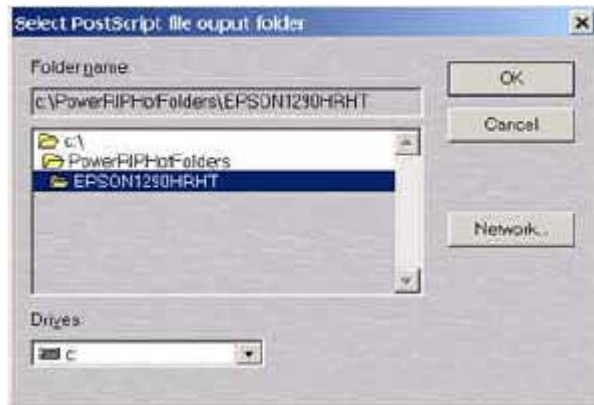
MultiRIP



The new entity name will be added to the list and you will be returned to the Configure MultiRIP Printer Entities in **edit mode**. You will notice that the button formerly named “Add” now reads “Cancel Add” you can click this button at any time to cancel the add operation.

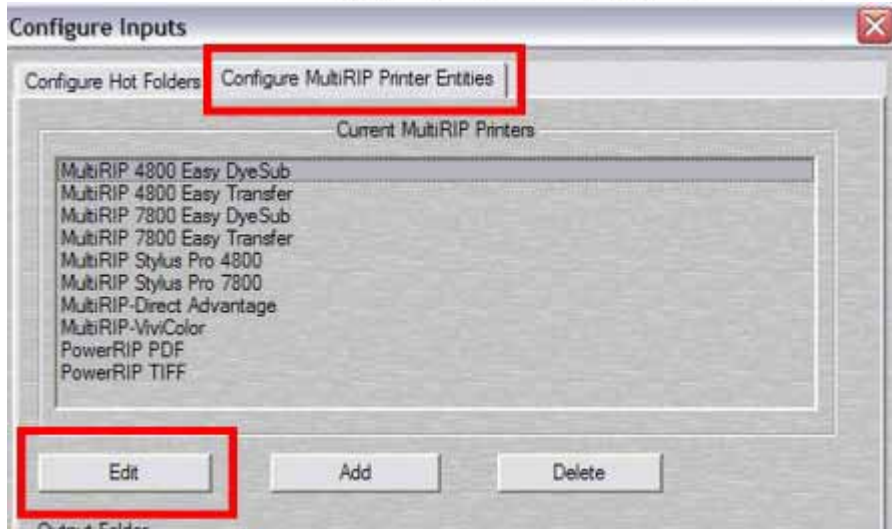


Go to the “Output Folder” section and click on the “...” button to navigate to our hot folder.



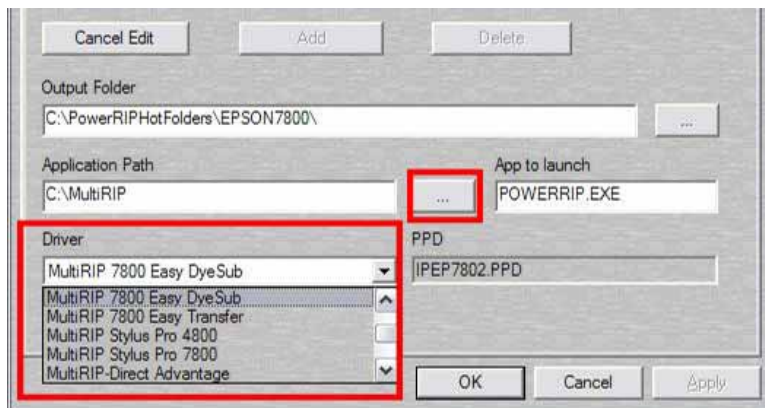
Navigate to the hot folder we created during the hot-folder setup phase and click OK. This instructs the new printer entity to deposit its PostScript files into this folder. Your dialog should now look like this:

MultiRIP



Next we're going to select the printer driver to use. Since we're going to be ripping jobs to the Epson 4800, we need to use that driver. **Note:** The driver is really the same for all of MultiRIP's devices (Windows PostScript driver version 5) what differentiates the different drivers on the list is the PPD that is used... and it is very important to use the right PPD.

Click the "Driver" drop-list and select "MultiRIP Stylus Photo 4800". It is imperative that the driver you use has the "MultiRIP" prefix. You CANNOT use any other drivers.



Once you select the proper driver, you will see the PPD name appear in the box next to the driver name in this example the PPD is "IPEP4800.PPD".

Almost done. The last two settings are always the same (unless you have a VERY creative configuration). The last step is to enter the Application Path and App to launch settings. This tells the printer entity what application to launch when a job is received.

Click the navigation button ("...") next to the "Application Path" box and navigate to the folder where you installed MultiRIP. The default folder is usually C:\MultiRIPImageSet. Once you've navigated to the folder, select "MultiRIP.exe" and click "Open". Your dialog should now look like this:

For up-to-date information, please visit the online User Forum at www.multiripusers.com.

MultiRIP



Click "Apply"
Click "OK"

The printer entity is now created. Any jobs printed from any application to the Windows printer called "Epson4800Halftones" will be printed with the settings we hardwired regardless of the settings selected at print-time. You can also share this new printer entity and print to it from remote workstations just like the ones that were created at install-time.

MANAGING OUTPUTS

MultiRIP is designed to support printing to multiple printers connected to multiple ports. It employs "output queues" which are actually Windows print queues that are used to send rasterized page data to the printer(s).

Upon installation, one output queue is created for each printer selected. The default name for the output queues are "MultiRIP Output Queue 1", "MultiRIP Output Queue 2", etc. Assuming you selected the correct ports when prompted during the installation, you shouldn't "need" to touch the output queue configuration.

It is possible, however, to add additional output queues for special purposes. Below are two examples of how additional output queues might be used.

In the previous chapter, there is a tutorial that creates an input (Print Manager entity/hot folder setup) for printing to an Epson 4800 with hard-wired print settings.

Example 1:

Lets say that a user, currently running with our example setup (an Epson 4800 and an Epson 7800) acquired a second Epson 4800 for printing only high-resolution screened color proofs on Professional Photo Paper. Let's say that the original Epson 4800 is connected to USB port 1 and the Epson 7800 is connected to USB port 2 and he plugs the additional Epson 4800 printer to USB port 3. This printer is always loaded with Professional Photo Paper so we want all the jobs printed to the Windows printer "Epson4800Halftones" (see end of previous chapter) to print to this printer instead of the first Epson 4800. All the user would have to do is create a new output queue which prints to USB port 3 and change the hot-folder settings for the "EPSON4800HRHT" hot folder entry to output to this new output queue instead of its currently selected output queue.

Example 2:

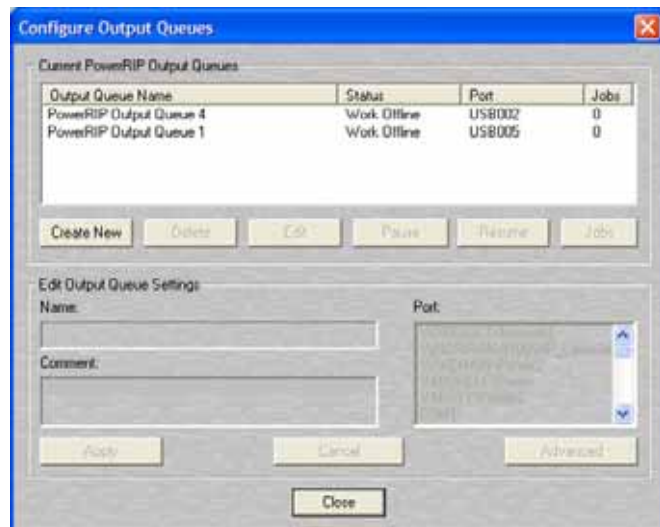
Another example using the new printer entity we created in the exercise at the end of the last chapter:

MultiRIP

Lets say that the user of this fictitious system did NOT acquire an additional Epson 4800 but he/she doesn't want these high-res jobs from the Epson4800Halftones printer entity which are supposed to print on Photo paper sneaking in while there's plain paper loaded in the printer. The user could create an additional output queue which prints to THE SAME port as MultiRIP Output Queue 1, modify the EPSON4800HRHT hot folder configuration to output to this new output queue, and keep this new output queue **paused** while the printer is loaded with different media. This way, all jobs printed to Epson4800Halftone will process and the pages will wait in this new output queue until it is released. When the printer is loaded with the high quality media, he/she can then release the output queue allowing all the waiting pages to print. These examples might give you ideas as to how to customize your MultiRIP configuration.

Working with Output Queues

To launch the Configure Output Queues dialog click the "Outputs" button on the MultiRIP main dialog.



This dialog allows you to manage the jobs in the different queues as well as modify the queues themselves. You can, of course, add and delete queues.

The current output queues are listed in the section labeled "Current MultiRIP Output Queues". The name, status, port and jumber of jobs currently in the queue are plainly displayed

Below the list of queues are the control buttons which let you control and edit the different output queues.

Controlling the output queue and its jobs.

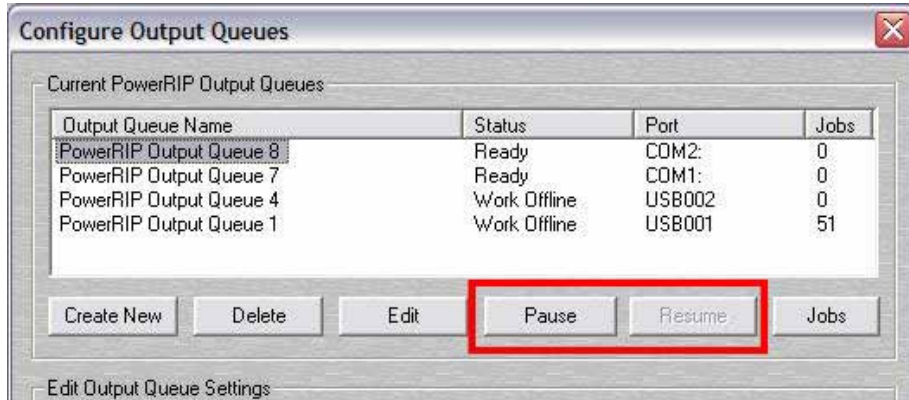
From this dialog you can pause and resume an output queue. You can also open the queue and list the jobs that are in a queue and pause/resume/restart/delete individual pages. You can do this from the "Pages Being Printed" tab in the main MultiRIP dialog but this dialog is more "direct" as you can list the pages in a particular output queue, as the "Pages Being Printed" displays all pages being printed in all queues. For example if you wanted to purge all pages from only from "MultiRIP Output Queue 1" it is much easier to do it from here.

For up-to-date information, please visit the online User Forum at www.multiripusers.com.

MultiRIP

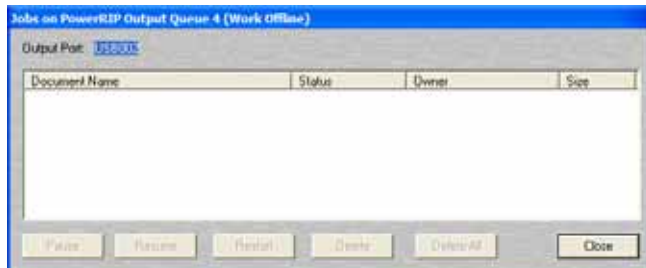
Pausing & Resuming output queues

To pause or resume an output queue, select the queue by clicking its name in the list then click the “Pause” or “Resume” buttons. If the queue is paused, the only the “Resume” button will be enabled. If the queue is not paused, only the “Pause” button will be enabled. Keep in mind that when you pause a queue, it will not send any “additional” pages but if there’s a page already printing it will continue to print until its completion. To pause the printing page, you must pause the page itself



Managing a queue's jobs (pages)

To view a queue's jobs double-click the queue name or select the queue by clicking on its name and click the “Jobs” button.

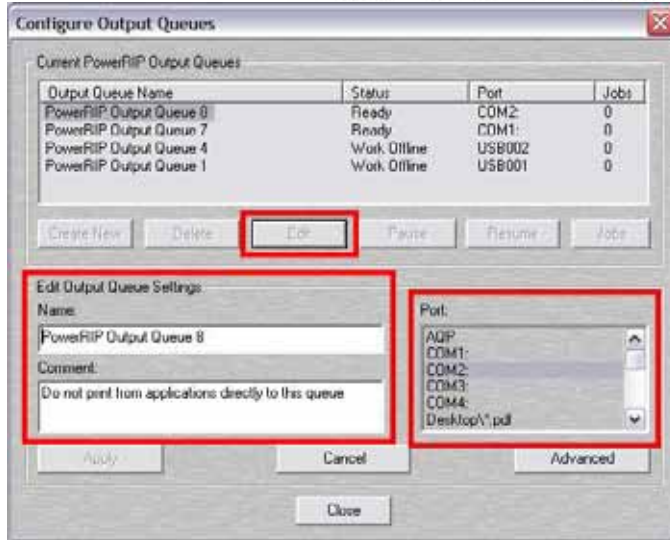


The jobs dialog will appear. While in this dialog, you can manipulate all pages currently in the selected output queue. You can delete, pause, resume, restart any number of pages or you can purge the entire queue by clicking “delete all”. Simply select the pages you wish to act upon and click the proper button.

Changing an output queue's destination port.

To change the physical port that an output queue sends its jobs to, select the queue by clicking on its name then click the **Edit** button. The dialog will enter “edit mode” and you can then make changes to its configuration. Select the new port in the “**Ports**” list and click “**Apply**”.

MultiRIP



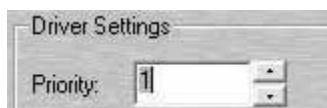
Advanced Settings

The advanced settings dialog allows you to set some of the same attributes that you can set in Windows without having to open start\printers\ etc. To change the advanced settings, select the queue and click the Edit button. The dialog will enter "edit mode". Click the "Advanced" button.



Priority:

This will assign a default priority to the output queue. This will be overridden, however, by the priority setting of the individual pages.



Driver:

The driver used makes little difference on an output queue. The jobs (pages) arrive here already rasterized and ready to send directly to the printer. The driver does nothing but pass the data

For up-to-date information, please visit the online User Forum at www.multipusers.com.

MultiRIP

through to the output port. In some rare cases, it is advantageous to use the printer's native driver as the driver for the output queue. Most of the time, however, this setting is irrelevant.

Spool print documents to disk:

This enables page spooling. If this is not selected, the data is sent directly to the output port and the "start printing after page is spooled" and "start printing immediately" features are disabled. It is preferable to have this selected.

Start printing after page is spooled:

When selected, Windows will not start sending the page data to the printer until the entire page has been spooled.

Start printing immediately:

When selected, Windows will start sending page data to the printer as soon as the page starts to spool.

Print directly to the printer:

When selected, Windows will not spool page data to disk. It will send the data directly to the output port. This is discouraged.

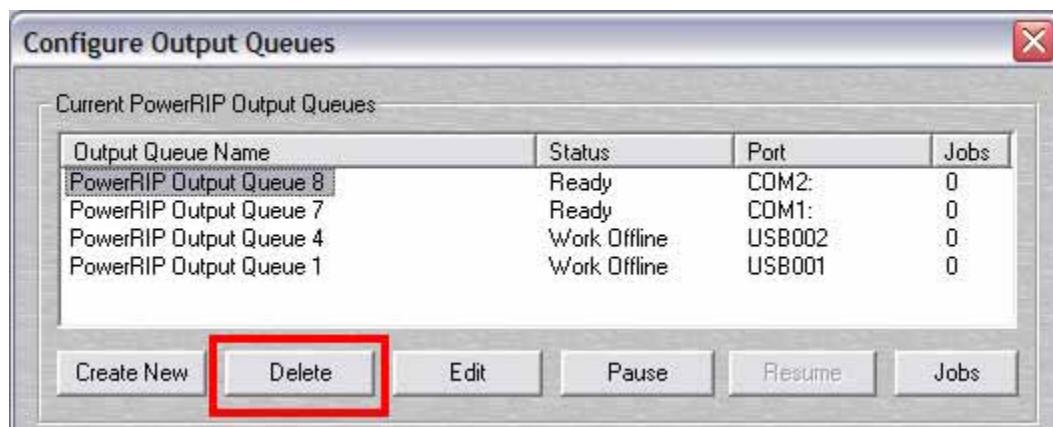
Keep printed pages, do not delete after printing:

After the page is printed, it remains in the output queue with a status of "Printed". This is handy for re-printing pages by just issuing a "restart" from the output queue dialog or the "Pages Being Printed" queue. **NOTE:** Keep in mind that as long as there are pages from a job in the Page Queue (output queue) the job will not expire, running like that all the time might cause you to run out of disk space.

Deleting an Output Queue.

Care must be used when deleting an output queue. If there are hot folder configurations using an output queue and this queue is deleted without first changing the hot folder configuration, the hot folder mechanism will pick the first available output queue at print-time instead. The pages might end up going to the wrong port. Before deleting an output queue, be sure no hot folders are using it.

To delete an output queue, just select it's name and click the **Delete** button.

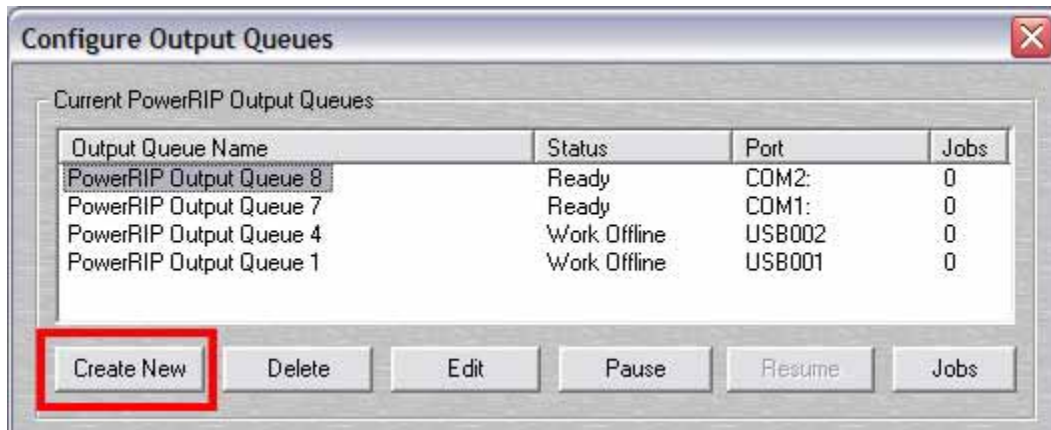


For up-to-date information, please visit the online User Forum at www.multiripusers.com.

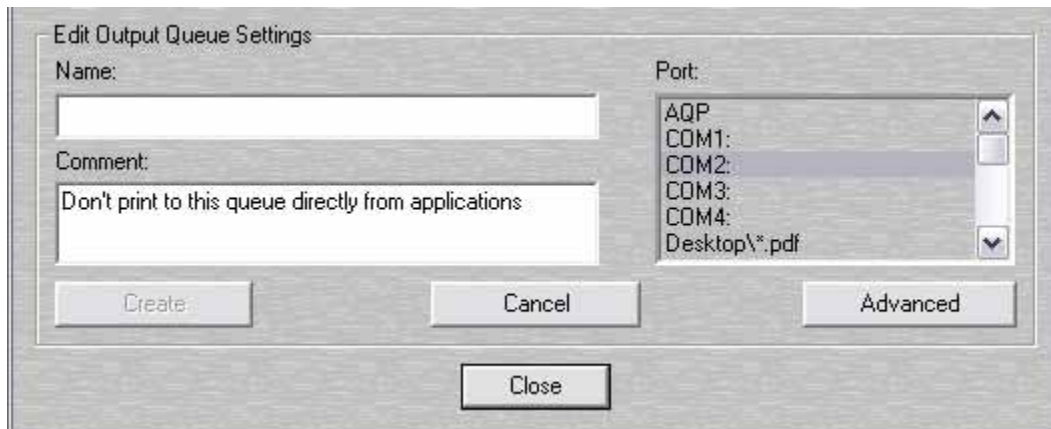
MultiRIP

Adding an output queue

To add a new output queue, click the “**Create New**” button. The dialog will go into “edit mode”.



Select the **name**, **port** and any **advanced** options you wish and click **Apply**.



NOTE: When setting advanced options it is necessary to click **Apply** when exiting the Advanced menu and then again to save the new output queue.