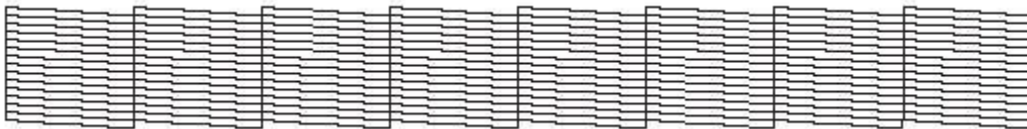


# MultiRIP

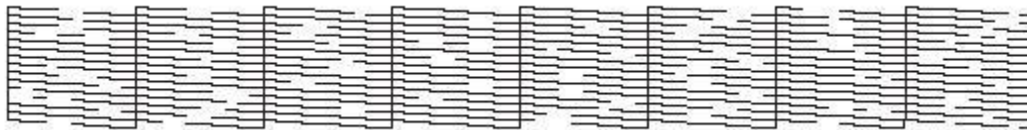
## How to Run a Nozzle Check & Head Cleaning

If the colors coming out of your printer do not look correct, you may want to run a nozzle check. A nozzle check is a printer self-diagnostic that should be run after the printer has been sitting unused for long periods of time or if print quality is diminished, (i.e. lines, or banding, is occurring in all or parts of a print). Running a nozzle check will show you if any of the print head nozzles are clogged or are not firing properly. Print a nozzle check and look for any missing or deflected nozzles.

If the pattern prints properly, the printer is ready to print.

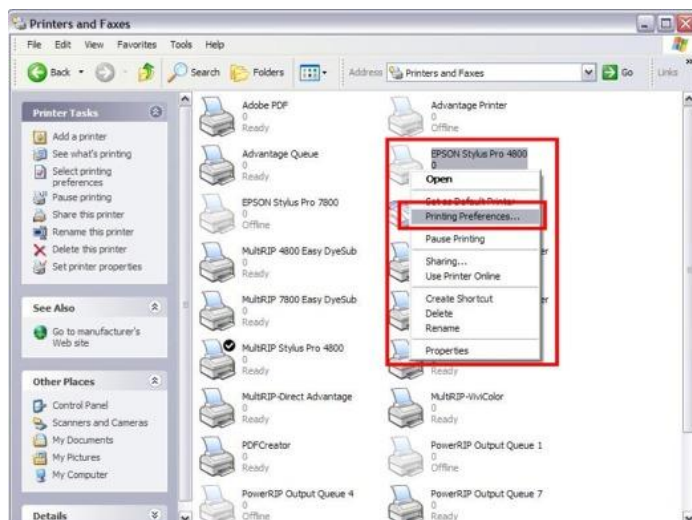


If there are missing or deflected nozzles, run the standard head cleaning (instead of the power cleaning).



NOTE: The Power Cleaning function uses a large amount of ink, so you should run it only when it is absolutely necessary. Try using the Head Cleaning function first.

Step #1. Go to the Printers & Faxes folder on your computer. Right click on Epson Stylus Pro x800 and go the Printing Preferences window.



Step #2. In the Printing Preferences widow, click on the Utility tab.



Step #3. Click on the button for Nozzle Check. A new window will open up and you will have the following three choices:

- Auto – it will print a Nozzle Check and will automatically run a Head Cleaning if necessary
- Print – it will only print a Nozzle Check. You will need to go back to the Utility tab and run a Head Cleaning from that screen.
- Finish – When you are done doing the Nozzle Check(s), click this button to close this window.



Step #4. If you want to run a Head Cleaning, go back to the Utility tab and click on the button for Head Cleaning. Then, click on the Start button. When you are done, click the Cancel button.

