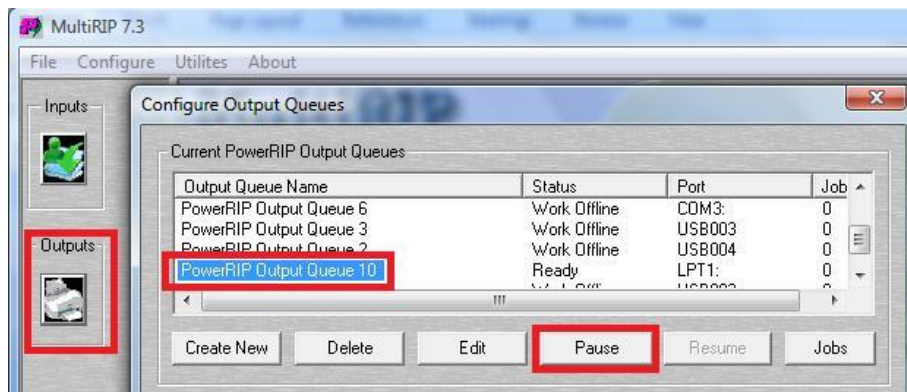


MultiRIP

Why does Only a Portion of My Design Print on a Roll of Paper

If only a portion of your design prints on a roll, then it probably means that the orientation or roll paper settings are not set correctly. This typically happens when the design is landscaped in CorelDraw. The quickest way to solve this problem is to rotate your graphic 90 degrees in CorelDraw and then print it. You will also want to make sure that your Orientation setting is always set to Portrait – not Landscape.

To preview a print, pause the Print Queue by click on the Outputs button on the MultiRIP Interface. Then, select the appropriate Print Queue and click on the Pause button.

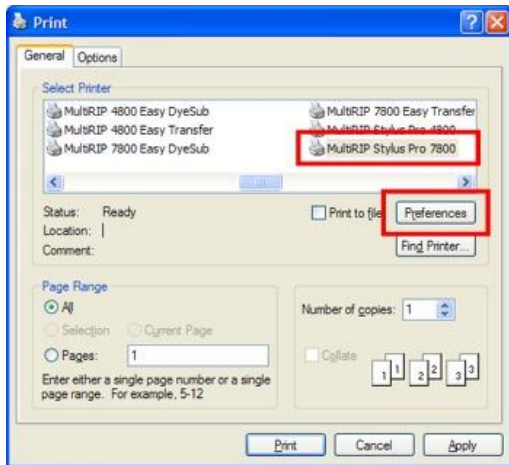


Below are the instructions for how to set the print settings for printing on to a roll of paper.

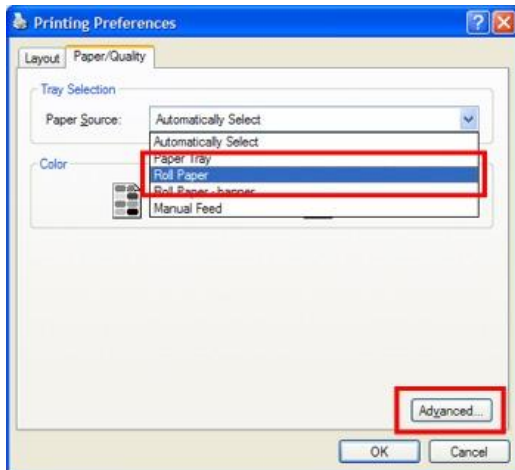
How to Print on a Roll of Paper

If you are having problems printing your full design on a roll of paper, you will need to check your paper settings for the printer and the RIP. Below are the steps to check this correctly.

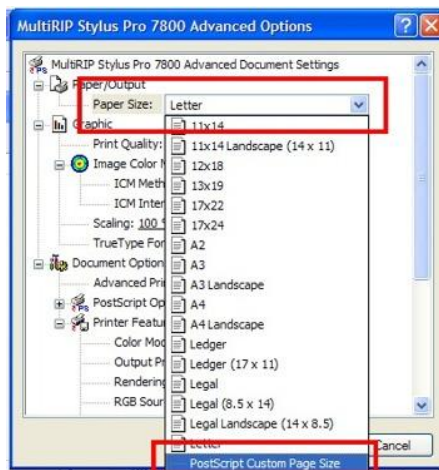
Step #1: Select the appropriate MultiRIP x800 printer and click on the Preferences or Properties tab.



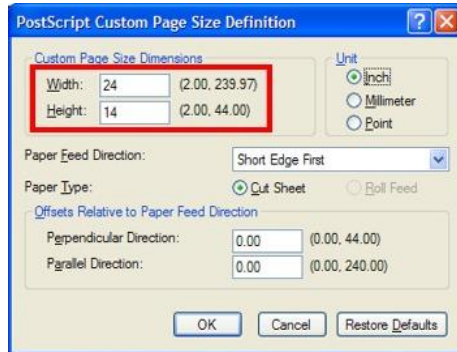
Step #2: Go to the Paper/Quality tab and select “Roll Paper”. Then click on the Advanced button in the bottom right corner of the screen.



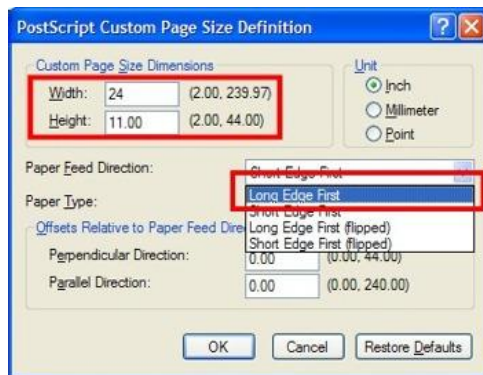
Step #3: Go to the Paper Size selection and select “Postscript Custom Page Size”.



Step #4: In the new window, type in the width of the paper roll and the height of the size of the paper you want to come out of the printer. NOTE: The size of the paper should allow for some border around the actual size of the design.



Step #5: In the Paper Feed Direction drop-down, you will need to determine whether you want to select “Short Edge First” or “Long Edge First”. You will use “Long Edge First” selection when the width of the paper (i.e. width) is longer than the amount of paper you want to come out of the printer (i.e. height).



Choose the “Short Edge First” selection if you want more of the paper to come out of the printer (i.e. height) than the size of the roll (i.e. width).

