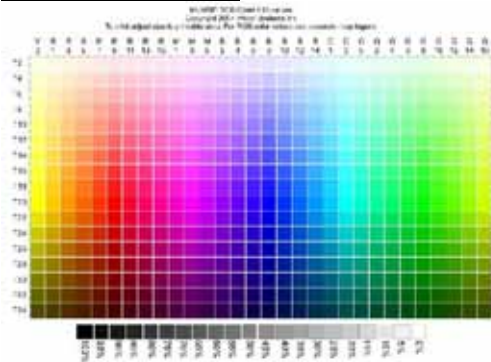


Photoshop Color Chart, Swatches & Table Guide

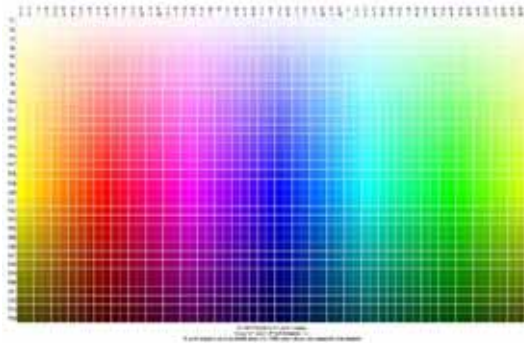
Most users want to be able to show their customers the variety of colors that can be printed and how those colors can be affected when printed on to different colors of t-shirts or other substrates. Thanks to Ted at iProof, you now have the ability to print either a 510 or 2040 RGB color chart.

Click here to download the Photoshop RGB package - http://www.multirip.com/Photoshop_RGB.zip

510 Color Chart



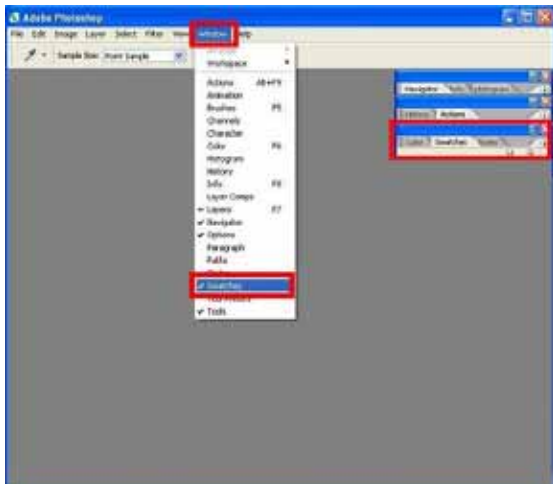
2040 Color Chart



In addition, MultiRIP has provide you Color Swatches that coordinate with the 510 Color Chart. We also added in 20 grayscale boxes as well.

You can load the Color Swatches by following these instructions:

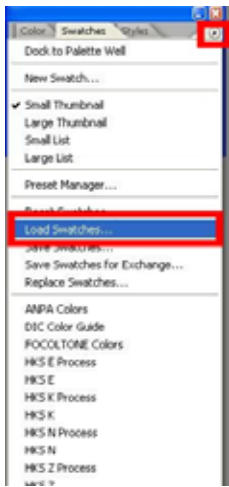
1. Open up Photoshop. Go to Window link across the top and go down to Swatches. This will open the Swatches window.



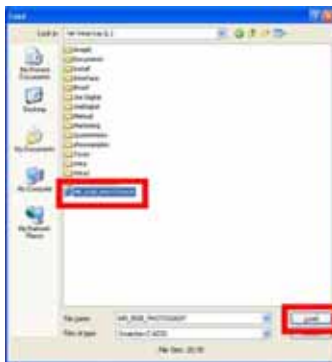
2. Click on the round Play button in the top right corner of the Swatches window and go down to Load Swatches.

Please visit www.AnajetUsers.com for more technical support on MultiRIP GP.

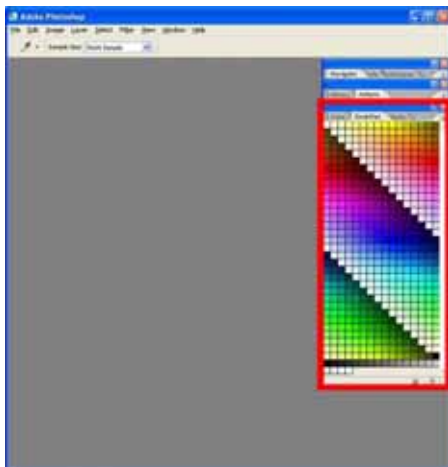
Updated 11/01/03



3. Find the Swatches file from zip folder you downloaded. Click on the file name and then click the Load button.



4. The Swatch palette associated with the 510 color chart will now be displayed.



If you print the color chart out using the same settings as your graphic, you will be able to choose the correct colors using the X- and Y- axis coordinates to select the correct color.

NOTE: You can choose to use the 2040 color chart and the PDF color table to have even more colors to choose from.

Please visit www.AnajetUsers.com for more technical support on MultiRIP GP.

Updated 11/01/03