

MultiRIP

Why is the Printer only Printing Text and Numbers?

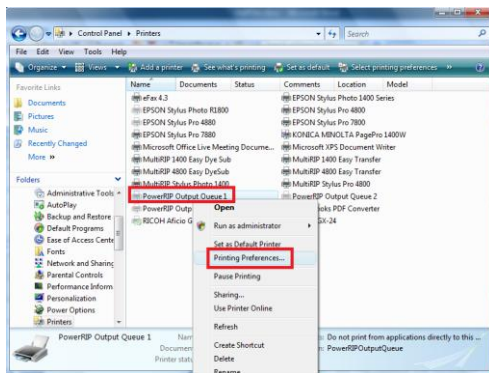
The text and numbers being printed is called postscript information and is what the printer needs in order to print your graphic. There are a couple of reasons as to why this could be happening.

Option #1: Check Your Ports! The port for the PowerRIP Output Queue must match the port for the Epson printer. Click on the links below to learn how to do this.

Why does the printer only print postscript (text) when I am trying to print a graphic?

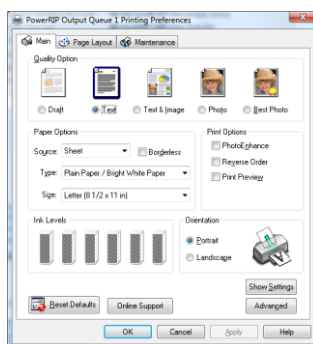
[PDF Answer](#) | [Video](#)

The other thing to test is to see if your print driver is set for that queue is correct. Find the PowerRIP Output Queue associated with the printer you are choosing. Right click over the print queue icon and go to Printing Preferences.

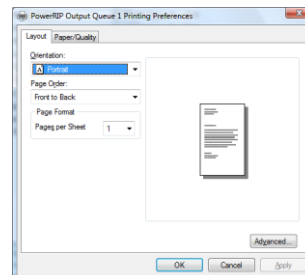


The window should look the same as if you did the same steps on the Epson Stylus Pro queue as well. See the pictures below for an illustration.

CORRECT SETUP

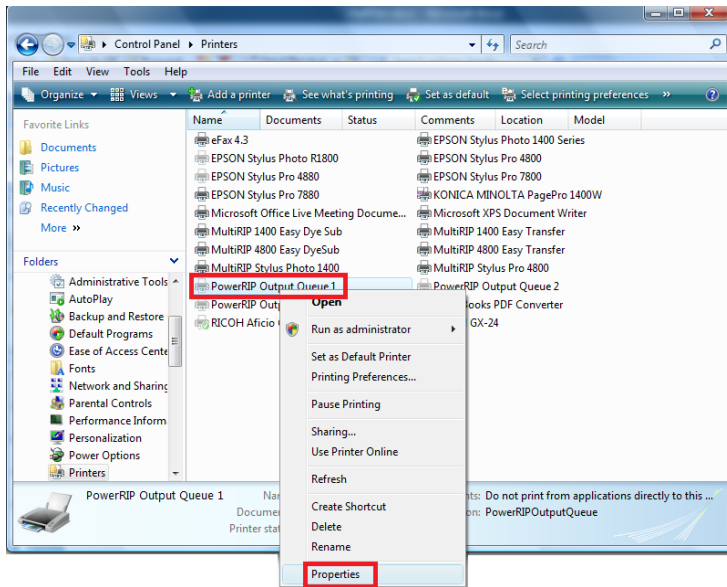


INCORRECT SETUP

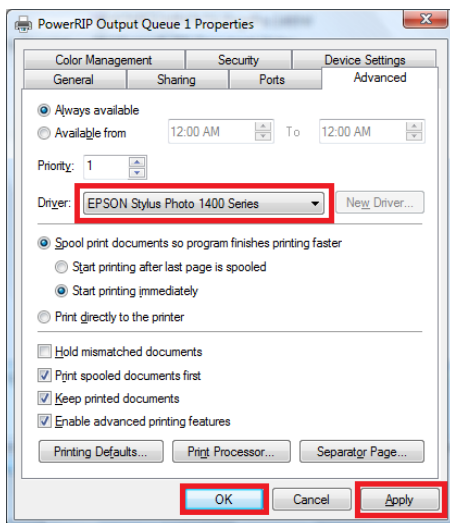


If you have the incorrect setup, please follow these steps:

Step #1: Right click over the PowerRIP Output Queue and go to Properties.



Step #2: In the new window, click on the Advanced Tab. Change the selection in the Driver field (drop-down box) to the name of your printer. Then click the Apply button and then the OK button.



Step #3: Print a job to the printer using on of the MultiRIP printers.

For additional technical support information, please visit the Frequently Asked Questions page (www.multirip.com/faq.html) or contact your Distributor.