

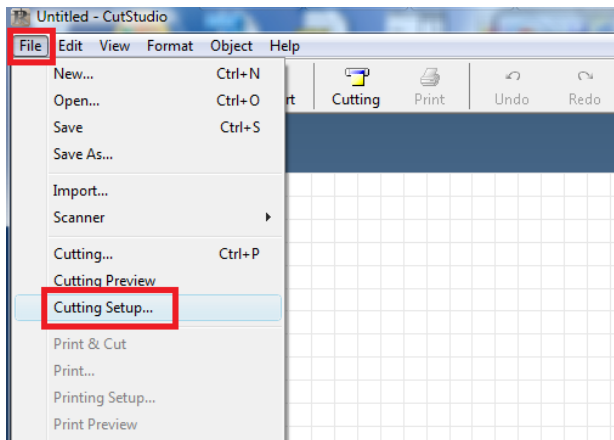
MultiRIP

Why Can't I Select Print-Cut in the Roland CutStudio Software?

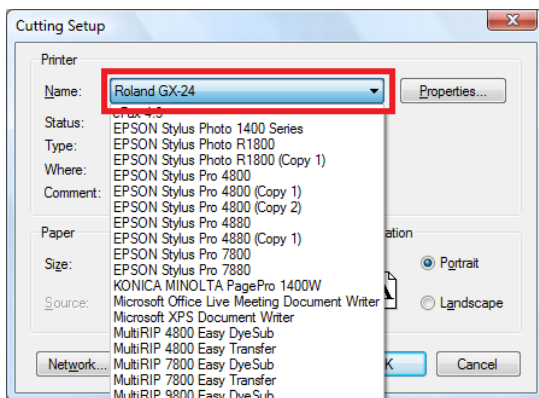
Problem: When trying to do print-cut using the Roland CutStudio software and MultiRIP hybrid RIP software, I am unable to select the Print-Cut option. Why is it grayed out and not able to be selected?

Answer: The reason why you can't select the Print-Cut option in the Roland CutStudio software is because the software is set to the wrong piece of equipment. Follow the instructions below to properly setup the software to do Print-Cut.

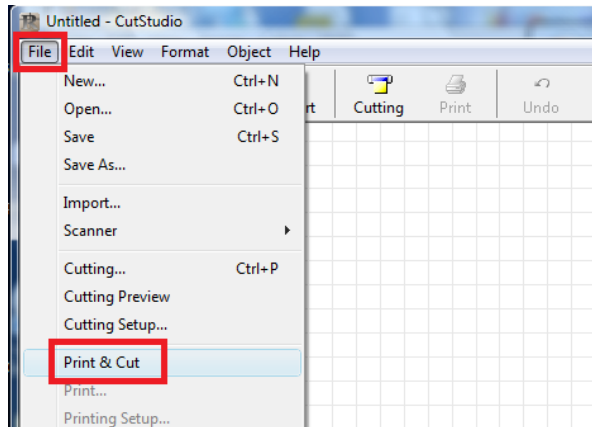
Step #1: Open up the Roland CutStudio software. Go to the File Menu and click on Cutting Setup option.



Step #2: Click on the drop-down box for Name: and select the Roland GX-24. Click Ok.



Step #3. Now click on the File menu and the Print & Cut option is now available.



Here are links to videos that will show you how to use the Roland CutStudio software to do Print-Cut with the MultiRIP hybrid RIP software.

Highlight video of Roland CutStudio Software for doing print-cut application.
[Video](#)

How do I do Print-Cut with MultiRIP hybrid RIP on the Roland GX-24 Cutter and Roland CutStudio software?

[PDF Answer](#)

How do I add a white border around my graphic to make it stand out more on a dark shirt using the Roland CutStudio software? (i.e. Use the offset feature)

[Video](#)

How do I remove any white trim around my graphic using the Roland CutStudio Software? (i.e. Use the inset feature)

[Video](#)