

MultiRIP

How to Print-Cut with Roland CutStudio and MultiRIP

MultiRIP will work in conjunction with Roland CutStudio Software and similar programs to allow you to do print-cut inkjet transfers with your optical registration cutter. You may consider using the MultiRIP Easy Transfer print driver depending on what your graphic is and what type of transfer paper you are using.

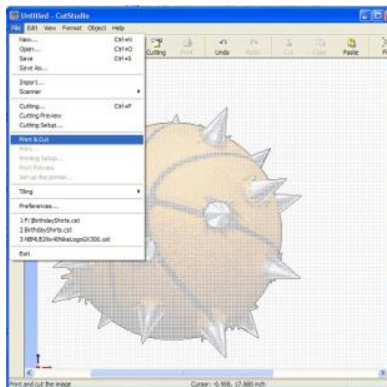
NOTE: You must use a specific type of inkjet heat transfer paper that will allow you to weed (i.e. remove) the excess polymer from the paper backing.

Step-by-Step Instructions

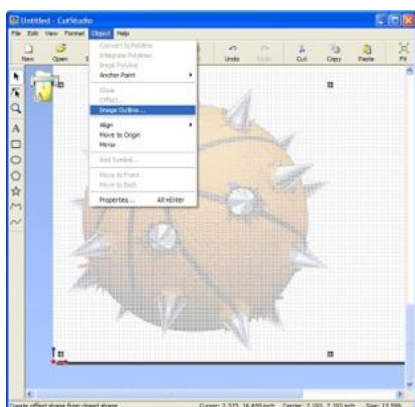
1. Import your graphic file into the cutting software program that came with your optical registration cutter.



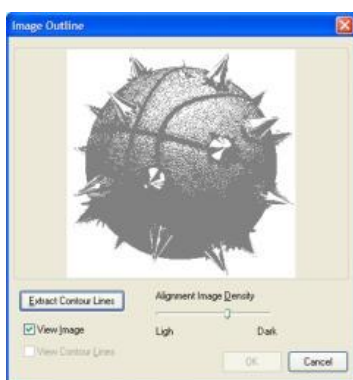
2. Go to File menu and select Print-Cut function



3. Click on your graphic and go to Object menu so you can select Image Outline.

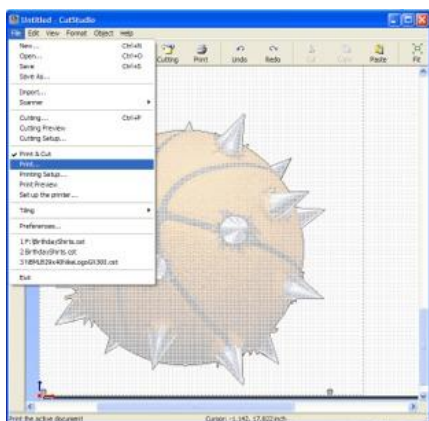


4. Slide the Alignment Image Density control so you can eliminate the cutting nodes in the inside of the graphic. Click on the Extract Contour Lines button.

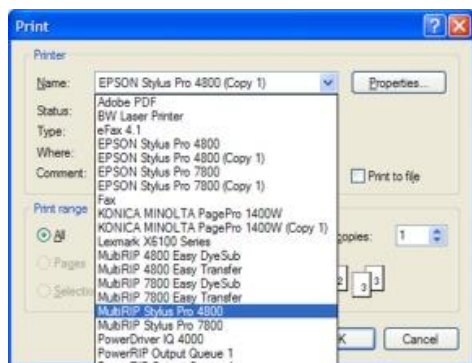


NOTE: You may have to remove or clean up the inside of your graphic if you are using a raster image.

5. Go to the File menu and select Print.



6. In the printer menu, choose the MultiRIP Stylus Pro 4800 selection. Click on the Properties (or it maybe called Preferences) button.



7. Click on the Advance Tab in the bottom left corner of the window.



8. In the Advanced Options screen, you will need to set the following fields:

Paper Size – Based on the size of the paper in your printer

Print Quality – This should be set to Enhanced

Mirror Image – If you are using Light Transfer paper, then this should be Yes. If you are using Dark Transfer paper, then this should be No.

Ink Type – Should be set to MultiINK.

Media Type – Should be set to Transfer (Photo) or Transfer (Graphic).

