

MultiRIP

Printer Only Prints Postscripts / Text (i.e. Setting the Ports)

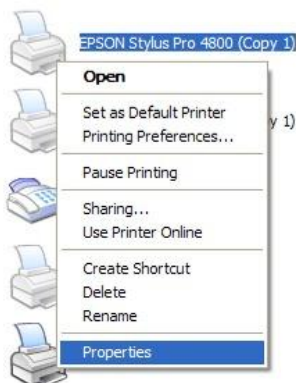
If you are having problems with getting your Epson printer to print your graphic and the only thing things that come out of the printer are text and numbers (i.e PostScript), you might have a problem with MultiRIP communicating with your printer. Here are the steps to making sure all the settings have the correct port.

NOTE: It is very important to make sure that the native driver for the Epson printer is already installed on your computer before you install MultiRIP. If it is, MultiRIP will detect the native driver and set all these settings for you automatically.

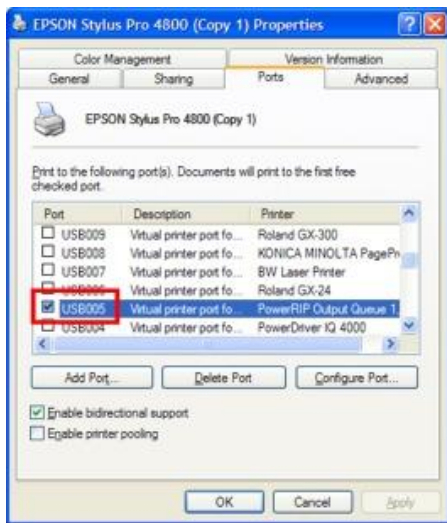
1. Go to Printers & Faxes from the Start Menu.



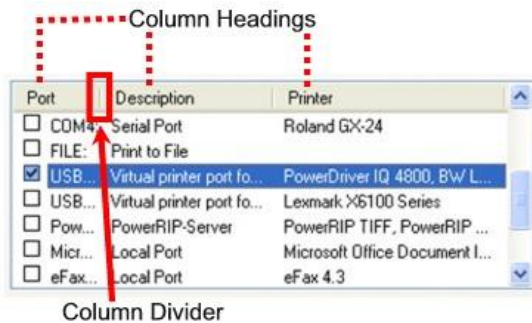
2. Find the icon for the printer that you are using (i.e. Epson Stylus Pro 4800) and right click on it and go to Properties.



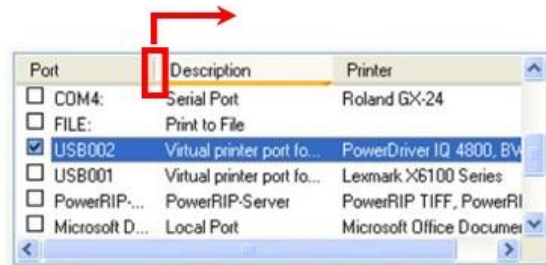
3. Click on the tab for Ports and see what Port # it is located at. Write this Port # down as you will need it for Step #7. Click Save and exit this window.



NOTE: Some times you can't see the full Port # as described shown below. You will need to move to column heading for Description to the right to see the full name.



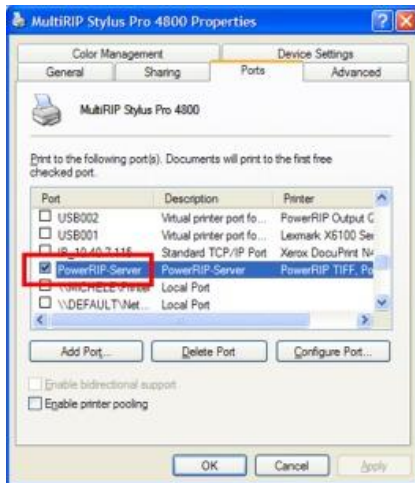
To do this, put your cursor over the column divider and hold down the left click button on your mouse. Drag your cursor to the right until you can see the full column name as shown below.



4. Next, find the icon for MultiRIP Stylus Pro 4800 and right click on it and go to Properties.



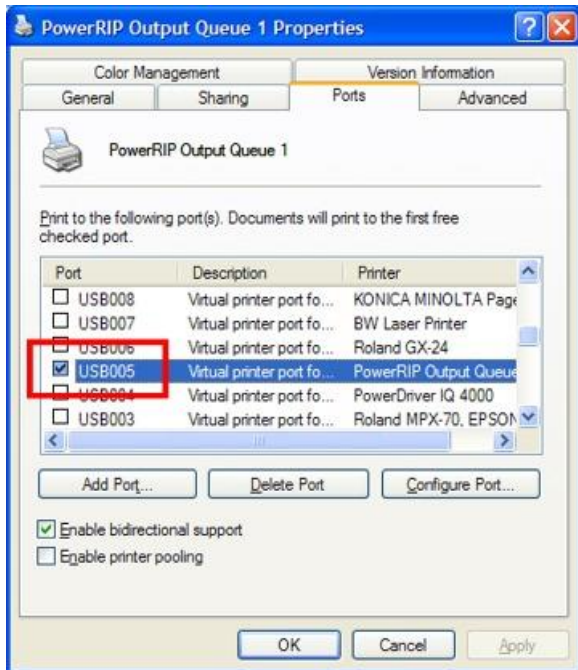
5. Click on the tab for Ports and make sure that it points to "PowerRIP-Server" port. Click Save and exit this window.



6. Finally, find the icon for MultiRIP Output Queue 1 and right click on it and go to Properties.



7. Click on the tab for Ports and make sure that the Port # is the same as in Step #2. Click Save and exit this window.



NOTE: If there was an error message, any one of the three printers might go off line. Please make sure all three printers state that they are online.