

MultiRIP

APPLICATION PRINTING

Dye Sublimation (📺 [Video Available](#))

MultiRIP is profiled for creating high quality dye sublimation transfers using either ArTainium™ or SubliJet IQ® inks from Sawgrass Systems®. You must to which ink set you will be using at the time of installation. In order to change ink sets, you will need to uninstall and re-install the MultiRIP software.

The following substrates have been profiled:

- Polyester Fabric (for Graphics)
- Polyester Fabric (for Photos)
- Mousepads
- Metal
- Tiles
- Glass
- Ceramic

Step-by-Step Instructions

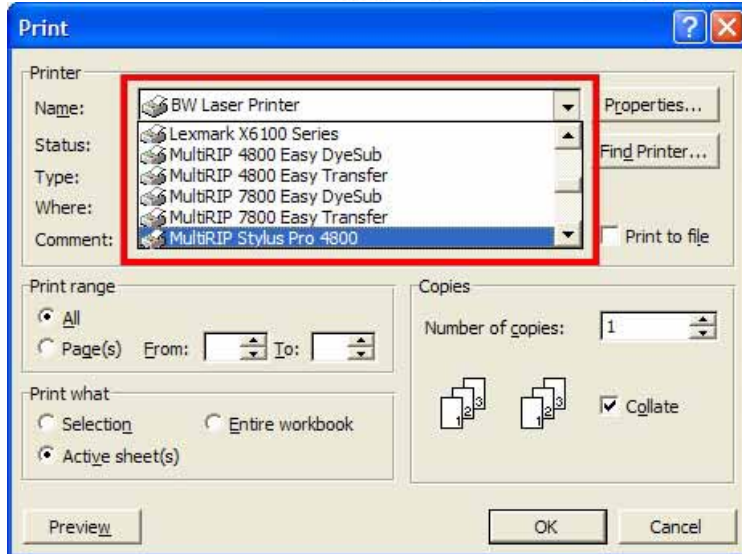
1. Open your photograph in the appropriate program. For example, we are going to use Adobe PhotoShop® for printing a dye sublimation transfer. Go to File Menu and down to Print.



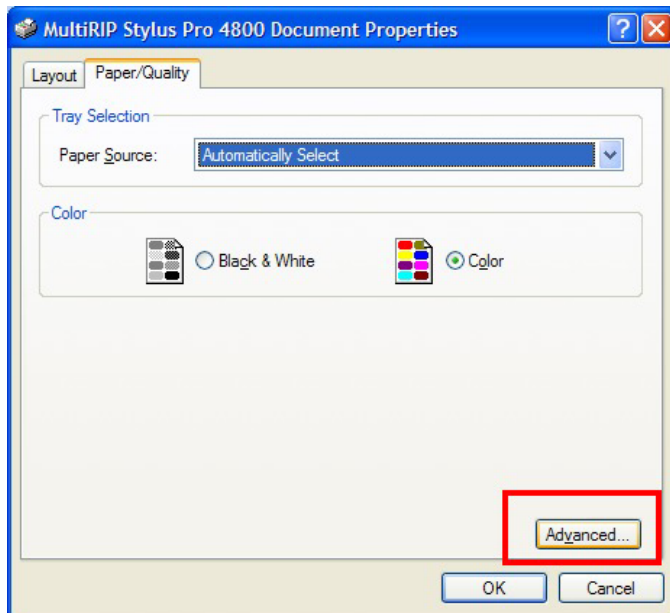
2. Select the MultiRIP Stylus Pro 4800 printer.

For up-to-date information, please visit the online User Forum at www.multiripusers.com.

MultiRIP



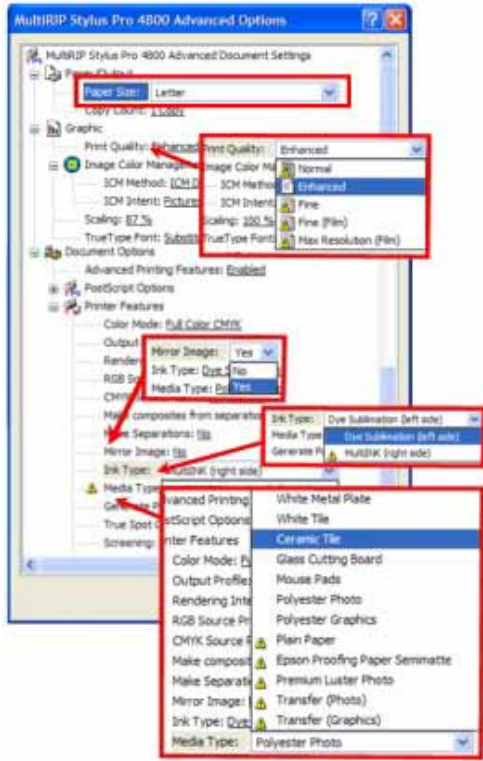
3. Click on the Advance Tab in the bottom left corner of the window.



4. In the Advanced Options screen, you will need to set the following fields:
- Paper Size – Based on the size of the sheet paper in your printer.
 - Print Quality – Depending on the substrate you are using, your options for resolutions may change.
 - Mirror Image – Should be set to Yes for most substrates except Glass.
 - Ink Type – Should be set to Sublimation Ink.
 - Media Type – Should be set to the type of media that you are applying to.

For up-to-date information, please visit the online User Forum at www.multiripusers.com.

MultiRIP



Roll Media Step-by-Step Instructions

When printing from a roll of sublimation paper, you should do the following additional steps to set up your printer to accept roll feed.

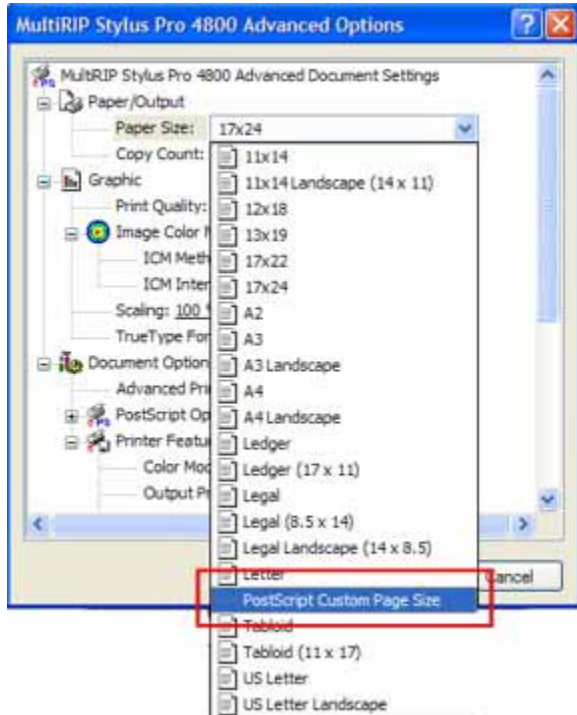
1. After selecting the MultiRIP Stylus Pro X800 printer and clicking Properties, you will need to change the Paper Source to "Roll Paper".



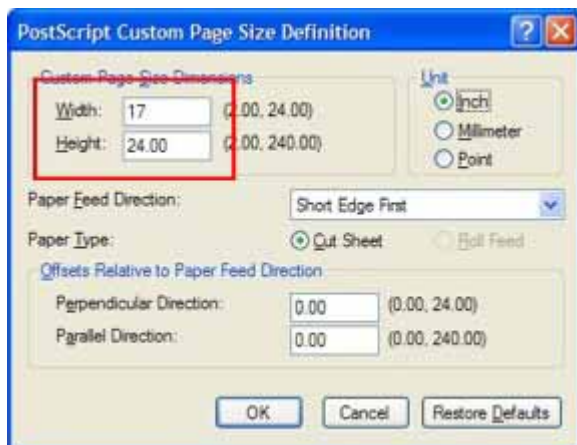
For up-to-date information, please visit the online User Forum at www.multiripusers.com.

MultiRIP

2. Then click on the Advanced button. For the Paper Size, you will want to select PostScript Custom Page Size.

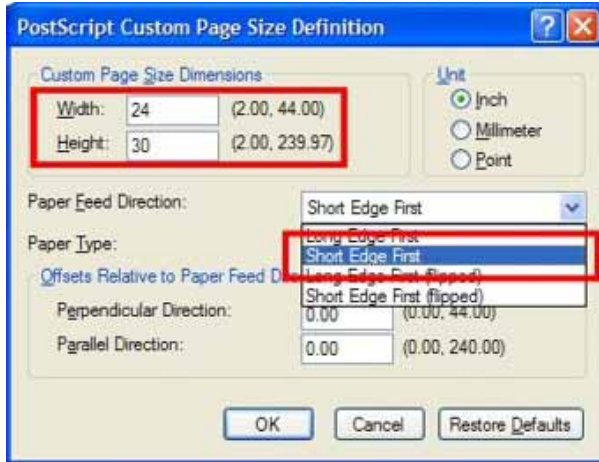


3. A new window will open up for you will put the width of the paper roll you are using and the height of the document.

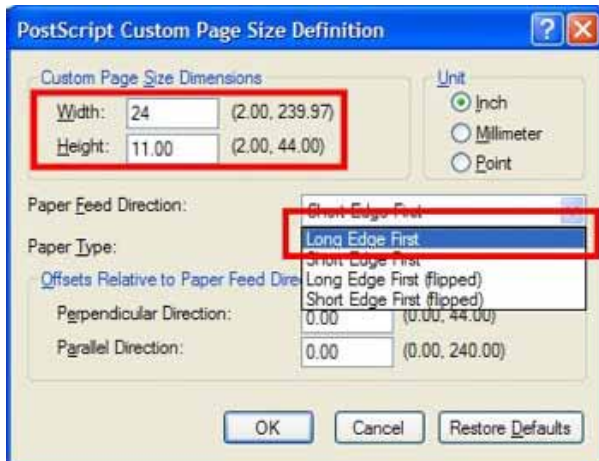


4. For the Paper Feed Direction selection, you will need to choose from “Short Edge First” or “Long Edge First”. You will choose “Short Edge First” when the width of your page size is smaller than the height.

MultiRIP



You will choose “Long Edge First” when the width of your page size is larger than the height.



NOTE: When using the Roll Paper function on the Epson 4800 and 7800 printers, the printer will automatically cut the paper to the height of your document unless you turn the cutting function off. See your Epson Printer Manual for how to do this.

EASY PRINT BUTTONS

MultiRIP has created two additional print drivers to make it easier for you to print standard inkjet and dye sublimation transfers. The MultiRIP x800 Easy Dye Sub and Easy Transfer printers are preset configurations that allow you to save time when doing standard jobs. Below are the settings for both of these printers.

NOTE: Some of the Easy Print driver settings can be changed or set as a default. These settings are Paper Size, Scaling and Mirrored Output. All the other settings are locked and cannot be changed.

For up-to-date information, please visit the online User Forum at www.multiripusers.com.

MultiRIP

Dye Sub Easy Print Settings

Ink Type – Dye Sublimation
Media Type – Polyester (Photo)
Resolution – Enhanced (720 x 720 dpi)
Mirror Image – Yes
Print Direction – Bi-Directional
Screening – Stochastic