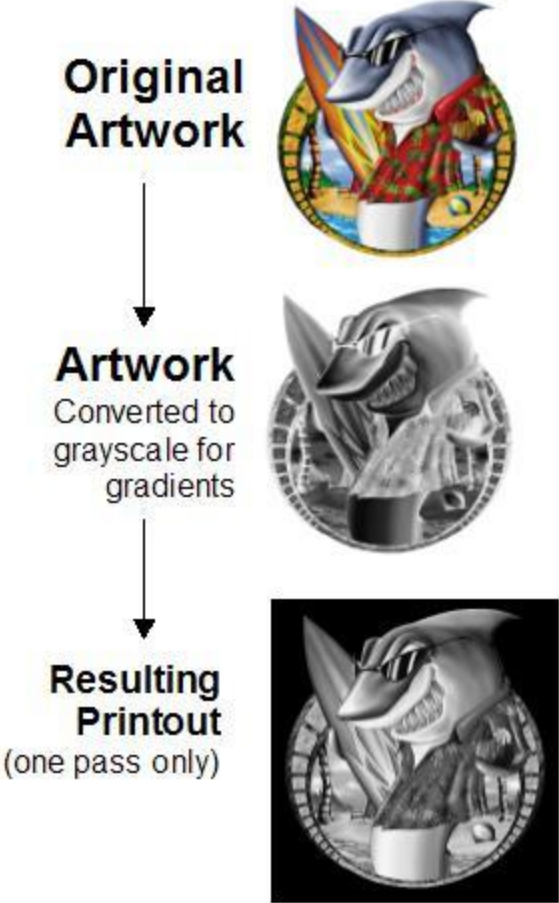


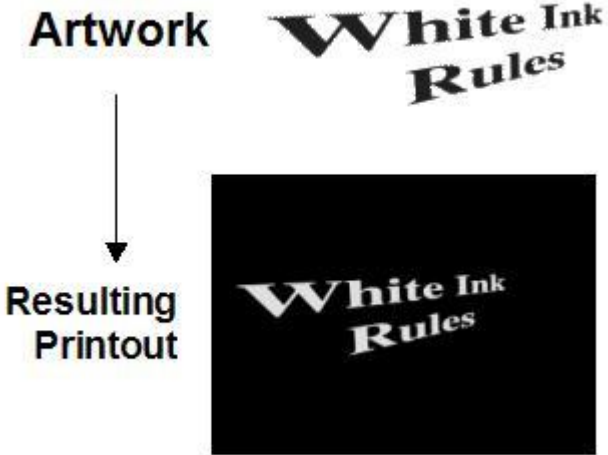
How to Print a Graphic using only White Ink on a Dark Garment

When a page is printed with the White Ink Layer type, all pixels (of any color) are printed in white ink. This is different than a mask layer as it is normally not used for underbase but rather for printing white logos, text, etc in white ink only. Like a white “mask” layer, a white “Ink” layer in the Print To Application does not retain the gray-scale automatically – so it will print 100% white ink under each pixel of color. You can convert your graphic to grayscale and then print it using White Ink Layer to get gradients should you desire. If you use the Print From Application, the “Use Only White Ink” option for the White Ink Generator will make your graphic grayscale for you. Unlike a white mask layer, a white ink layer will print immediately; it will not be “cached” like a user-defined white mask.

Graphics



Text



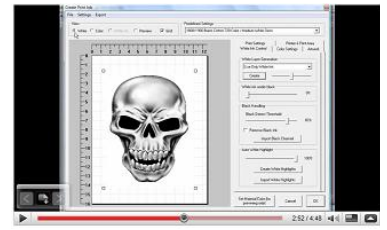
Instruction for using Print From Application with White Ink Layer

NOTE: Using the Print From Application, your graphic will be automatically printed in Grayscale using the White Ink Only layer.

Instructions for Color Layer Auto Mask in MultiRIP GP

Online Video Instructions

To view a complete video on how to use the “Use White Ink Only” option for generating a white underbase in the Print From Application in MultiRIP GP software, please either click on the video screen or copy / paste the link below into your internet browser.

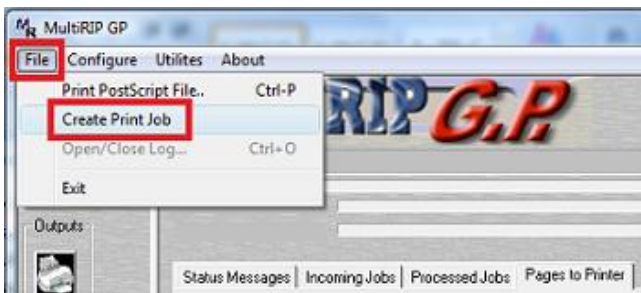


[Click here](#) to watch video

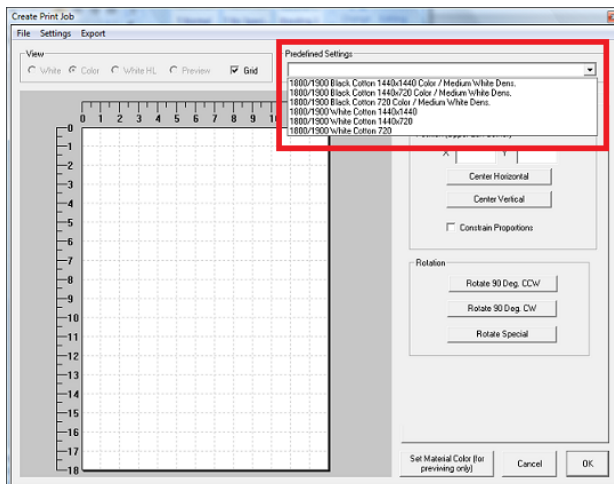
<http://www.youtube.com/watch?v=11pq0wrjP2o>

Written Instructions

1. Open the MultiRIP GP Interface. Click on the File Menu and click on the Create Print Job option

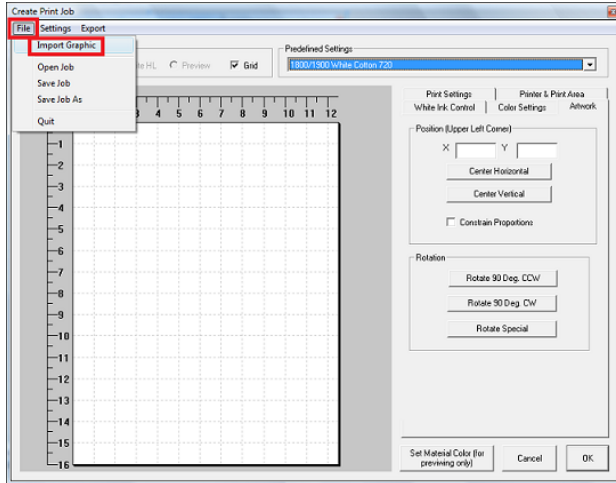


2. The Print From Application window will open up. Choose one of the pre-defined settings from the drop-down box in the top left for Black Cotton.

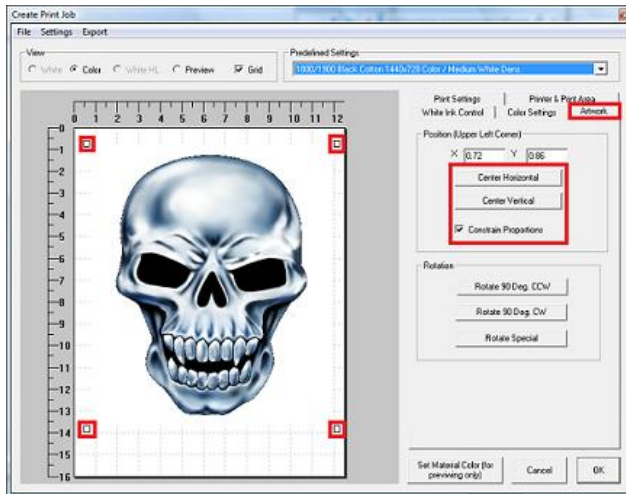


3. Next, click on the File Menu and select the Import Graphic Option. Locate the graphic file on your computer and click the Open button.

Instructions for Color Layer Auto Mask in MultiRIP GP

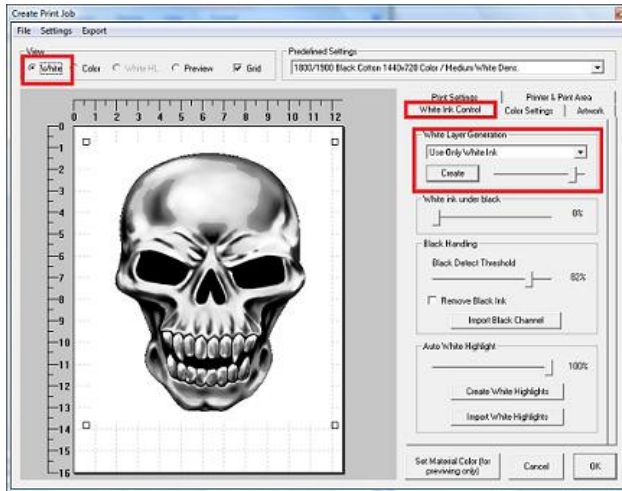


- Once the graphic has been imported into the Print From application, you will want adjust the size and position on the platen. Click on the Artwork tab. You can adjust the size of the graphic by left clicking down and holding one of the four corners of the graphic sliding the cursor in the appropriate direction to adjust the size. If you have the “Constrain Proportions” box checked, you will not distort the design. You can click on the buttons for centering your design horizontally and vertically on the platen – as well as rotate the graphic should you desire.

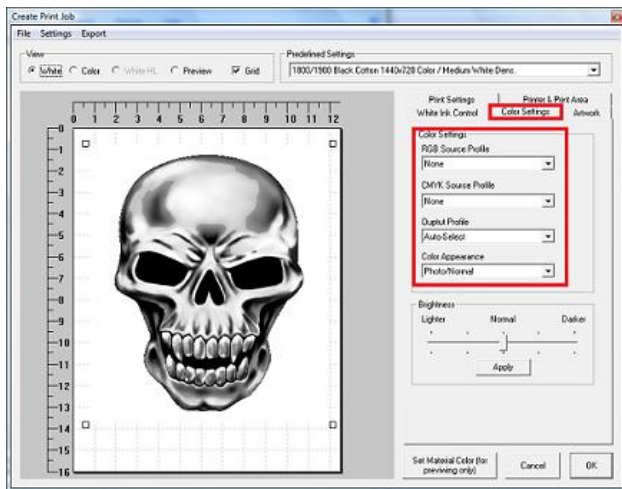


- Click on the White Ink Control tab. In the White Underbase Generation field, choose the “Use Only White Ink” option. Then adjust the slider to the density of white ink you want to use. Click the Create button. You can preview the white underbase layer by clicking on the White radio button at the top left corner of the screen. If you are not happy with the amount of white ink showing up in the preview, you can adjust the slider and click the Create button again.

Instructions for Color Layer Auto Mask in MultiRIP GP



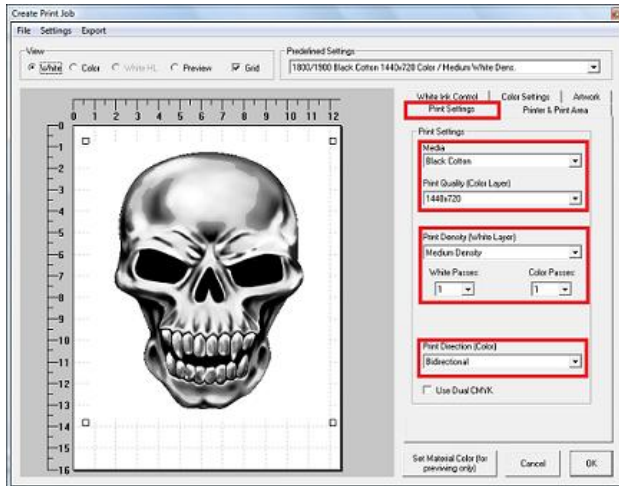
- Next, click on the Color Settings tab. Here you can choose to print using either an RGB or CMYK Source Profile, select an Output Profile or change the Color Appearance.



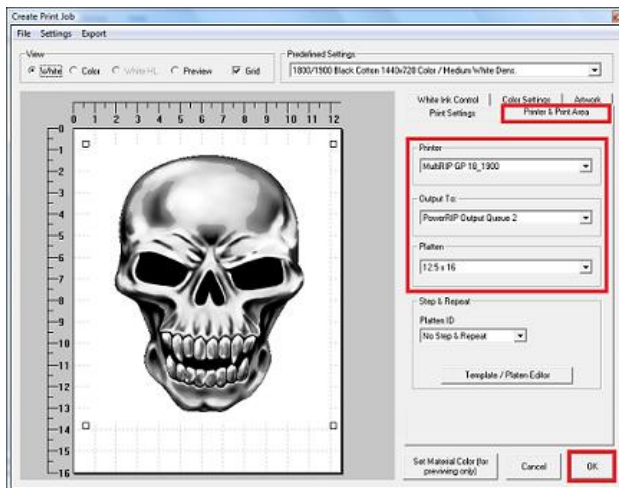
NOTE: Each shop will want to run color management tests to see which, if any, source profile should be selected based on the file format the graphic is created in.

- Next, click on the Print Settings tab. This is where you can change the type of media type, print resolution, # of color passes, printing in bidirectional versus uni-directional and running in Dual CMYK mode.

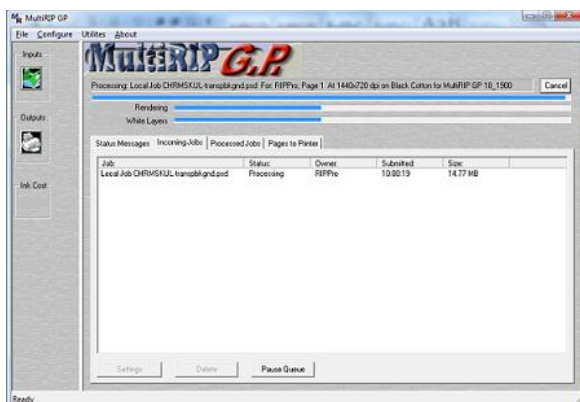
Instructions for Color Layer Auto Mask in MultiRIP GP



8. Finally, click on the Printer & Print Area tab. Here is where you will select the printer and output queue you want to use, as well as the size of the platen. Advanced users will setup the Step & Repeat feature from this tab as well. When finished, click the OK button.



9. The job will begin to be processed by the RIP software and sent to your printer.



Instructions for Color Layer Auto Mask in MultiRIP GP

Instructions for Printing using Print To Application using White Ink Layer Option

NOTE: Using the Print To Application, your graphic will need to be converted to Grayscale before printing it with the White Ink Only layer.

Online Video Instructions

To view a complete video on how to print a vector or raster graphic with only using white ink using the Print To application and the White Ink Layer feature, please either click on the video screen or copy / paste the link below into your internet browser.



<http://www.youtube.com/watch?v=mVqnOeFP8t0>

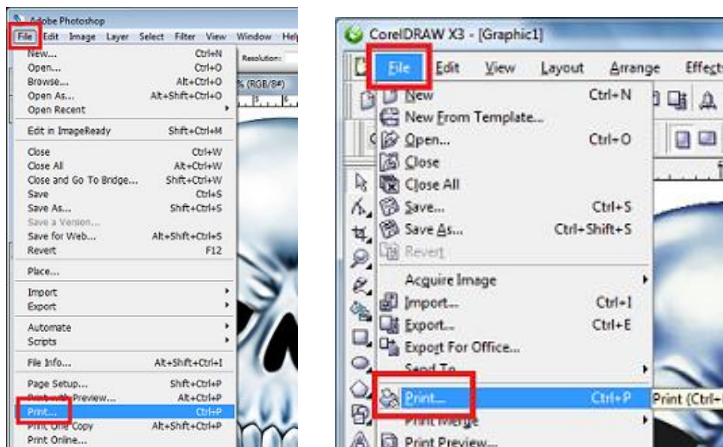
[Click here](#) to watch video

Written Instructions

1. Open the design in your graphic software program. Make the size of the canvas the same size as your platen. If you want the graphic to print as a Grayscale, then convert it in your graphic software program before going to Step #2.

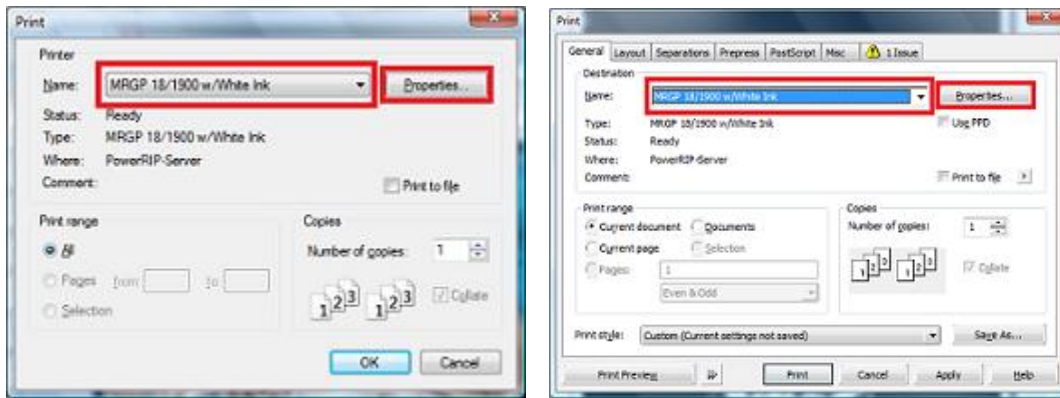


2. Click on the File Menu and select the Print button.

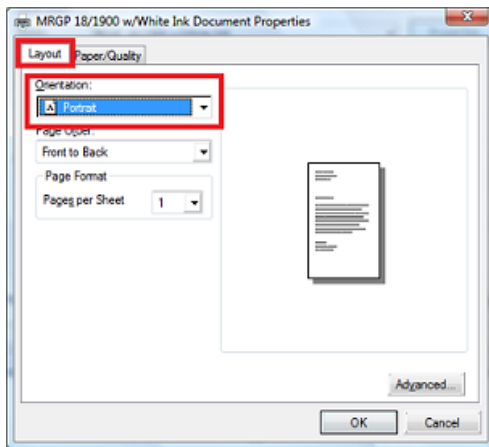


3. Choose the MultiRIP GP printer (i.e. MRGP 1800 w/White Ink) in the drop-down box. Then click on the Properties button.

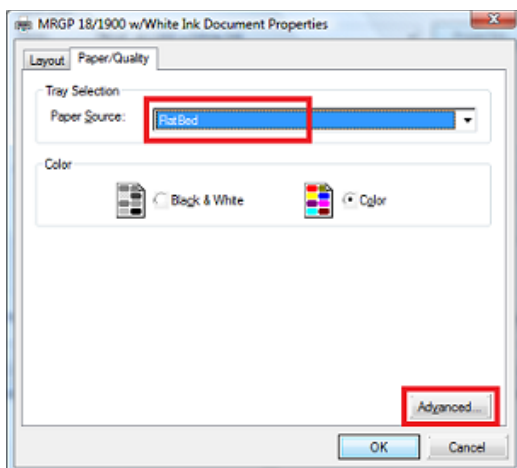
Instructions for Color Layer Auto Mask in MultiRIP GP



4. In the Properties window, make sure that you have Portrait selected for the Orientation field. Otherwise, CorelDraw will crop the design. Trust us on this one. If your design is in Landscape orientation, rotate it 90 degrees on your platen and adjust the way you put your shirt on a platen.

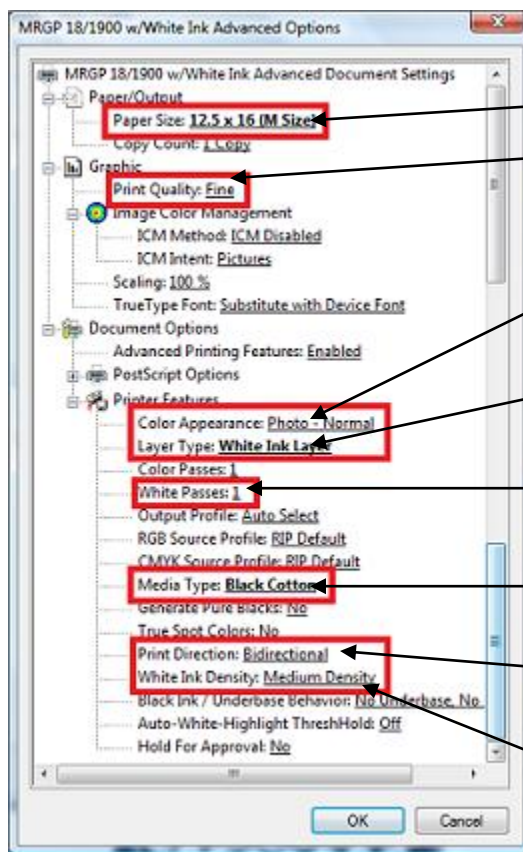


5. Click on the Paper / Quality tab, and select Flatbed in the Paper Source field. Then, click on the Advanced button.



Instructions for Color Layer Auto Mask in MultiRIP GP

6. In the Advanced window, you will want to set the following fields to the appropriate settings:



* Page Size – set to your platen size

* Print Quality – set to the desired printing resolution

* Color Appearance – select either Photo – Normal or Vivid – Darker

* Layer Type – choose Color Layer Auto-Mask Black Background

* White Passes – select the desired # of passes

* Media Type – select Black Cotton

* Print Direction – choose between Bidirectional or Uni-directional

* White Ink Density – choose the desired setting

Special thanks to Great Dane Graphics (www.greatdanegraphics.com) for the rights to use its graphics above in this technical support document.